



Made for your world

|||||
newWORLD®

Introduction

Our kitchens are the centre of our homes and that's why New World's complete range of appliances has been designed to suit every scheme, taste and culinary need. With sleek styling, essential cooking functions and outstanding performance, the New World collection will transform your kitchen into a cooking haven truly made for your world.

So go on, take a look at New World.

Contents

Page 2

Features Guide

Page 3-5

Range Cookers

Page 6-8

Built-in Ovens

Page 9-10

Built-in Hobs

Page 11-14

Freestanding Cookers

Page 15-16

Hoods & Splashbacks

Page 17

Refrigeration

Page 18

Wine Coolers & Dishwashers

Page 19

Cleaning & Aftercare

Page 20

Customer Care

Page 21-26

Specifications

The New World Range of Colours



Owing to the limitations of the printing process, colours in this brochure may not be entirely accurate.

Features Guide

 Gyroflo Conventional Gas Oven A conventional oven works on the principle that heat rises. It is hotter at the top than at the bottom – ideal for cooking different dishes simultaneously.	 Bottom Heat Only This setting allows you to cook the bottom of pizza, flan or pastries without drying out the topping.	Main Oven The larger cavity in a double oven. Top Oven The smaller cavity in a double oven. Double Oven An oven with two cavities. The top oven includes a grill and some include an extra oven. Ceramic Hob The electric element is held in place under the ceramic glass. Ceramic hobs are easy to keep clean. Not all pans are suitable for ceramic hobs. Halogen Element Quite literally cooking at the speed of light. Each element is held under easy to clean glass and is heated by halogen tubes, providing instant 'light up'. Red Spot Elements Sealed electric hob elements that heat up quicker than standard elements. Dual Fuel The perfect combination of a gas hob with an electric oven and grill. Closed-door Grilling Closed-door grilling allows conventional grilling behind the safety of toughened glass doors. Energy Efficient Many of our products are designed to be very energy efficient. Not only is this great for the environment, it also saves you money.
 Electric Conventional Oven A conventional oven works on the principle that heat rises. It is hotter at the top than at the bottom – ideal for cooking different dishes simultaneously.	 Top Heat Only Ideal for browning foods such as rice pudding or cauliflower cheese as the heat is not as fierce as a grill.	
 Fan Defrost The oven fan assists defrosting by circulating air around the food ideal for delicate frozen foods such as cream gateaux and cheesecakes.	 Oven Light A light in the oven.	
 Conventional Grill The conventional grill cooks by using heat from above the food and is ideal for a range of dishes from toast to steak.	 Base Fan Ideal for dishes that require bottom heat, such as pizzas.	
 Dual Grill This feature allows you to use the whole of the grill or just part of it for grilling smaller quantities economically.	 Gyrofan Oven The heating element surrounds a fan which distributes hot air around the oven. The result is a more even temperature throughout the oven and much faster cooking - ideal for batch baking.	
 Fan Grilling The fan circulates heat from the oven grill around the food simultaneously browning and sealing the juices in. Economical rotisserie or spit effect.	 Frost Free Gone are the days of having to defrost your freezer, no ice build up means there's plenty of room for your ice lolly's.	



Range Cookers

With an impressive total of 7 different range cookers available, New World's range collection caters for all cooking needs and offers affordable style. Available in 80cm, 90cm and 100cm sizes and a variety of fuel options, these range cookers provide essential functions and effortless style, designed for those who love to cook for their friends and family.



DF91

90cm wide dual fuel range cooker

- 5 burner gas hob including wok burner
- Cast-iron pan supports
- Fanned oven
- Electric grill in oven cavity
- Storage compartment
- Electronic clock/minute minder
- Oven light in main oven
- Auto ignition
- E-rated energy
- LPG kit available to order



90EDO

90cm electric range cooker

- 5 zone ceramic hob
- 1 large fanned oven and 1 small conventional oven
- Electric grill in large oven
- Storage compartment
- LED clock/minute minder
- C-rated energy



90DFDO

90cm wide dual fuel range cooker

- 5 burner gas hob including wok burner
- Cast-iron pan supports
- 1 large fanned oven and 1 small conventional oven
- Electric grill in large oven
- Storage compartment
- Electronic clock/minute minder
- Oven light in main oven
- Auto ignition
- C-rated energy
- LPG kit available to order



90GDO

90cm wide gas range cooker

- 5 burner gas hob including wok burner
- Cast-iron pan supports
- 1 large conventional gas oven and 1 small conventional gas oven
- Gas grill in large oven
- Storage compartment
- Electronic clock/minute minder
- Oven light in main oven
- Auto ignition





SS

80DF**80cm wide dual fuel range cooker**

- 6 burner gas hob
- Enamel pan supports
- Fanned oven
- Separate electric grill
- Storage compartment
- Electronic clock/minute minder
- A-rated energy



SS CH

100G**100cm wide gas range cooker**

- 8 burner gas hob
- Enamel pan supports
- 2 large conventional gas ovens
- Separate gas grill
- Storage compartment
- Electronic clock/minute minder
- Viewing windows (on satin steel model only)



Top Right



Bottom Left



Top Left



SS CH

100DF**100cm wide dual fuel range cooker**

- 8 burner gas hob
- Enamel pan supports
- 2 large ovens, 1 fanned electric, 1 conventional
- Separate electric grill
- Storage compartment
- Electronic clock/minute minder
- Viewing windows (on satin steel model only)
- A-rated energy



Top right



Bottom Left



Top Left



Range Cookers

Built-in Ovens

With an extensive collection of built-in ovens, New World has something to suit all kitchen needs.

Available in a variety of finishes including bold white, and the new satin steel; a brushed steel finish with a coating that makes it easy to clean and cool to touch, all with the added benefit of being resistant to finger marking.



SS W

NW60F

Single electric fanned oven

- Fanned electric oven
- Minute minder
- Variable fanned grill
- Defrost function
- Drop down door
- 2 shelves, 15 positions
- Heat reflective door glass



SS

NW60FP

Single electric multifunction oven

- Multifunction electric oven
- Variable grill
- Defrost function
- Drop down door
- Heat reflective door glass



SS W

NW60G

Single gas oven

- Conventional gas oven
- 3 button electronic minute minder
- Gas grill
- Drop down door
- 2 shelves, 15 positions
- Heat reflective door glass

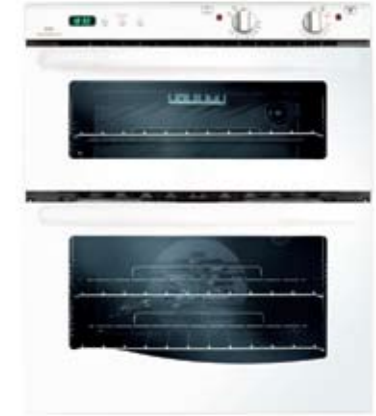


SS W

NW70G

Built-under/built-in gas oven and grill

- Conventional gas oven
- 3 button electronic minute minder
- Variable gas grill
- Drop down door
- Grill - 1 shelf, 5 positions
- Oven - 2 shelves, 10 positions
- Heat reflective door glass



SS W

NW70DO

Built-under/built-in electric double oven

- Main fanned electric oven
- Top conventional electric oven
- 3 button electronic programmer
- Dual circuit grill
- Drop down doors
- Top oven - 1 shelf, 5 positions
- Bottom oven - 2 shelves, 10 positions
- Heat reflective door glass



SS W

NW90G

Built-in gas oven and grill

- Conventional gas oven
- Variable gas grill
- Drop down door
- 3 button electronic minute minder
- Grill - 1 shelf, 5 positions
- Bottom oven - 2 shelves, 15 positions
- Heat reflective door glass



SS W

NW90DO

Built-in electric double oven

- Main fanned electric oven
- Top conventional electric oven
- 3 button electronic programmer
- Dual circuit grill
- Drop down doors
- Top oven - 1 shelf, 5 positions
- Bottom oven - 2 shelves, 15 positions
- Heat reflective door glass





Built-in Hobs

With an extensive collection of built-in hobs, New World has something to suit all kitchen needs.

Available in a variety of finishes including bold white, and the new satin steel; a brushed steel finish with a coating that makes it easy to clean and cool to touch, all with the added benefit of being resistant to finger marking.



NWCR60

60cm wide ceramic hob

- Black ceramic hob
- 4 radiant heat elements in 3 sizes
- Rotary controls
- Hot hob indicator
- Control knobs to match ovens



NWTC60

60cm wide touch control ceramic hob

- 4 radiant heat elements in 3 sizes
- Touch controls
- Hot hob indicator
- Child lock
- Timer function



NWGHU60

60cm wide gas hob

- 4 gas burners
- Enamel pan supports
- 1 rapid burner, 2 semi-rapid, 1 auxiliary
- Push button ignition
- LPG kit available to order
- Side control knobs to match ovens



NWGHU70

70cm wide gas hob

- 5 gas burners including 1 wok burner
- Enamel pan supports
- 1 wok burner, 1 rapid, 2 semi-rapid, 1 auxiliary
- Push button ignition
- LPG kit available to order
- Front control knobs to match ovens



NWSHU60

60cm wide sealed plate hob

- Electric solid plate hob
- Side controls
- 4 cast-iron plates
- 1 rapid response red spot
- Control knobs to match ovens



**FSD
products
ready NOW!**



ST BK

55TWLG

55cm freestanding gas twin cavity - FSD

- Enamel pan supports
- 4 variable gas burners
- Variable grill
- Conventional gas oven
- Wipeclean enamel
- Available in Nat Gas and LPG



ST BK

60TWLGLPG

60cm freestanding gas twin cavity - FSD

- Enamel pan supports
- 4 variable gas burners
- Variable grill
- Conventional gas oven
- Wipeclean enamel
- Available in LPG

Flame Safety Device

In the event of a flame going out, a Flame Safety Device (FSD) is designed to detect this and will cut off the gas supply. Flame Safety Device (FSD) will be a legal requirement on all gas products from March 2010.



Freestanding Cookers

Functional, stylish and easy to use, New World's freestanding cookers make a world of difference, with an innovative range designed to complement your lifestyle perfectly. Combining a stunning blend of looks and practicality with gas, electric and dual fuel models available, it provides all the value and quality you would expect from one of the leading brands in the market.



W ST SI

G50S

50cm gas single oven

- Gas hob with 4 variable burners
- 2 enamel pan supports
- Gas grill
- Conventional gas oven
- Glass drop down door
- Wipe-clean enamel oven interior
- Push button ignition



W SS

G60D

60cm gas double oven cooker

- Gas hob with 4 variable burners
- 2 enamel pan supports
- Glass lid with safety cut-off
- Top oven with gas grill
- Conventional main oven
- Wipe-clean enamel oven interior
- Removable inner door glass for easy cleaning
- Push button ignition



W

ES50S

50cm electric single oven

- Electric hob with 4 solid hotplates
- Conventional electric oven
- Electric grill
- Glass drop down door
- Wipe-clean enamel oven interior
- A-rated energy



W SI

G55T

55cm gas twin cavity cooker

- Gas hob with 4 variable burners
- 2 enamel pan supports
- Separate variable gas grill in top cavity
- Conventional main oven
- Wipe-clean enamel oven interior
- Removable inner door glass for easy cleaning
- Push button ignition



ST

ES50S

50cm electric single oven

- Electric hob with 4 solid hotplates
- Conventional electric oven
- Electric grill
- Glass drop down door
- Wipe-clean enamel oven interior
- A-rated energy



W BK

50HLG

50cm high level gas cooker

- Gas hob with 4 gas burners
- High level Sola gas grill
- Grill and serve captive grill pan
- Conventional main oven
- Double glazed oven door
- Battery powered ignition
- Storage compartment
- Wipe-clean enamel oven interior



W SS

E60D

60cm electric double oven cooker

- Ceramic hob with 4 elements
- Top oven with electric grill
- Fan main oven
- Wipe-clean enamel oven interior
- Removable inner door glass for easy cleaning



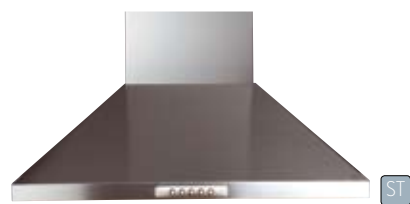
W BK

55HLG

55cm high level gas cooker

- Gas hob with 4 variable burners
- High level Sola gas grill
- Grill and serve captive grill pan
- Conventional main oven
- Double glazed oven door
- Mains powered ignition
- Storage compartment
- Wipe-clean enamel oven interior





Chim 60

60cm wide chimney hood

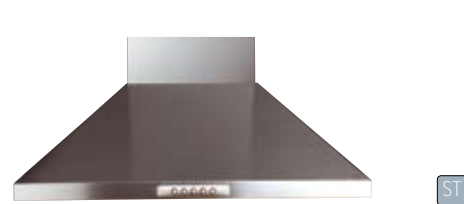
- Extendable chimney section
- Chimney hood
- 3 fan speeds
- Push button controls
- Twin lights



600CGH

60cm wide curved glass hood

- 3 fan speeds
- 2 halogen lights
- Push button controls



Chim 70

70cm wide chimney hood

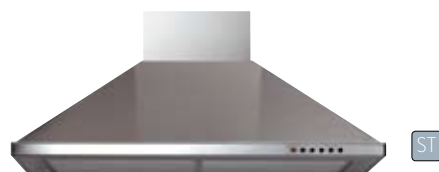
- Extendable chimney section
- Chimney hood
- 3 fan speeds
- Push button controls
- Twin lights



700CGH

70cm wide curved glass hood

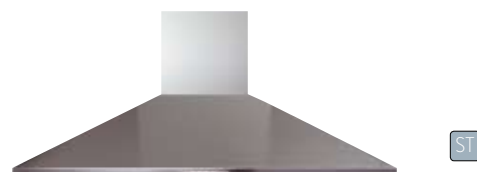
- 3 fan speeds
- 2 halogen lights
- Push button controls



Chim 80

80cm wide chimney hood

- Extendable chimney piece
- 3 fan speeds
- Ideal for use with 80DF range cooker
- Can be used to extract or re-circulate air



Chim 90

90cm wide chimney hood

- Extendable chimney section
- 3 fan speeds
- Push button controls
- Twin lights



900CGH

90cm wide curved glass hood

- 3 fan speeds
- 2 halogen lights
- Push button controls



Chim 100

100cm wide chimney hood

- Extendable chimney section
- 3 fan speeds
- Push button controls
- Twin lights

Splashbacks

SBK60 Splashback: with or without rail

- 60cm wide
- Ideal for use with freestanding cookers or 60cm wide hobs and hoods

ST BK*

SBK70 Splashback: without rail

- 70cm wide
- Ideal for use with 70cm wide hoods

ST

SBK80 Splashback: without rail

- 80cm wide
- Ideal for use with 80cm wide hoods

ST

SBK90 Splashback: with or without rail

- 90cm wide
- Suitable for use with the DF91 or 90DFDO/90GDO

ST BK*

SBK100 Splashback: with or without rail

- 100cm wide
- Perfect for use with all 100cm range cookers and the Chim 100 hood

ST BK*

*Black splashbacks do not have a rail



Product shown
is the 100DF

Hoods & Splashbacks

Add the finishing touch to your cooking area with a New World cooker hood and splashback. All hoods can be installed to either re-circulate or extract air. A hood is perfect for removing cooking odours and grease from the kitchen atmosphere. A splashback provides a stylish, easy to clean, heatproof surface behind the cooking area. Functional and modern, they offer the style that you have come to expect from one of the leading brands in the market.



NW802LA

Built-under larder refrigerator

- Total capacity 128 litres
- Adjustable thermostat
- Interior light
- 2 wire shelves
- 2 door containers (1 with lid)
- Salad crisper
- Egg tray
- A-rated energy



NW802FZ

Built-under larder freezer

- Total capacity 87 litres
- Manual defrost
- 3 freezer baskets
- 9kg/24hr freezing capacity
- A-rated energy



NW5052FF

50/50 built-in fridge/freezer

- Total net capacity 224 litres
- Automatic defrost in fridge, manual in freezer
- Adjustable thermostat in fridge
- 3 wire shelves
- 1 dairy compartment with lid
- 2 door containers
- 1 salad crisper with glass lid
- Egg tray
- 4 freezer compartments
- 4kg/24hr freezing capacity
- A-rated energy



NWFF5052FF

50/50 built-in frost free fridge/freezer

- Total net capacity 217 litres
- Automatic defrost in fridge, frost free in freezer
- Adjustable thermostat in fridge
- 3 wire shelves
- 1 dairy compartment with lid
- 2 door containers
- 1 salad crisper with glass lid
- Egg tray
- 4 freezer compartments
- 3.5kg/24hr freezing capacity
- A-rated energy



NWFF7031FF

70/30 built-in frost free fridge/freezer

- Net fresh food volume 189 litres
- Net frozen food volume 48 litres
- Automatic fridge defrost
- 3 glass shelves
- 1 salad/vegetable crisper
- 1 dairy compartment
- 2 door containers
- Frost free
- 3 freezer drawers/flaps
- 2.5Kg/24hr freezing capacity
- A-rated energy



NW7032FF

70/30 built-in fridge/freezer

- Total net capacity 224 litres
- Automatic defrost in fridge, manual in freezer
- Adjustable thermostat in fridge
- 3 wire shelves
- 1 dairy compartment with lid
- 3 door containers
- 1 salad crisper with glass lid
- Egg tray
- 3 freezer baskets
- 4kg/24hr freezing capacity
- A-rated energy



DW45

45cm integrated dishwasher

- 8 place settings
- 5 wash programmes, including pre rinse, delicate, eco, intensive and normal wash
- 3 temperature settings
- Salt and rinse aid indicators



DW60

60cm integrated dishwasher

- 12 place settings
- 5 wash programmes inc. pre-rinse, delicate wash, eco wash, intensive and normal
- 4 temperature settings and a half load option
- Delay start function
- Salt and rinse aid indicators
- Noise level max 53dBA
- A-rated energy



150SSWC

Wine Cooler

- External handle
- Open door sensor
- Digital temperature display
- Internal light
- 2 shelves
- 7 bottle capacity



300SSWC

Wine Cooler

- External handle
- Reversible door
- Digital temperature display
- Internal light
- Wood shelves
- 18 bottle capacity



600SSWC

Wine Cooler

- External handle
- Reversible door
- Digital temperature display
- Dual zone thermostat
- Internal light
- Wood shelves
- 46 bottle capacity

Integrated & Freestanding Appliances

New World has a range of quality built-under and built-in refrigerators and freezers. The built-under models are fitted with adjustable feet and can be fitted alongside each other, while the built-in models are designed to be installed into a tall unit. The New World range of integrated refrigeration combines style and quality with excellent value for money and all doors can either be left or right hinged. The fully integrated design makes the best use of available space, and co-ordinates the products with the look of a fitted kitchen.

The New World range of integrated products includes a full size integrated dishwasher and washing machine and combines style with quality. The fully integrated design makes best use of available space, and co-ordinates the products with the look of a fitted kitchen. New World also offer a range of highly specified freestanding dishwashers in 60cm and 45cm sizes.



Replacement Carbon Filters

Keep your kitchen odour-free by replacing your cooker hood filter every 3-4 months (depending on usage).

Product no:
082611571
082612620
082620630



Sealed Hotplate Conditioner

Restores the sleek matt black finish to your solid electric hotplates.

Product no: 082606783



Stainless Steel Cleaner

The perfect product for removing stubborn marks and generally keeping your appliances clean and shiny.

Product no: 082606764



Oven Cleaner Trigger Spray

Cut through the grease and burnt-on grime that collects on cooker walls and glass doors.

Product no: 082606786



Ceramic Hob Scraper Kit

Ideal for removing stubborn cooked-on marks from ceramic glass hobs.

Product no: 082606781



Multi-Purpose Kitchen Cleaner

An excellent multi-surface cleaner for general cleaning in the kitchen.

Product no: 082606782



Ceramic Hob Cleaner and Conditioner

Makes your ceramic hob easier to clean and extends its lifespan. Also prevents the build-up of mineral deposits, which can cause surface discolouration.

Product no: 082606780



E-Cloth™

A chemical-free cleaning product, ideal for cleaning and polishing glass and stainless steel.

Product no: 082813300

Customer Care

New World's Customer Care team were voted number one at the Domestic & General 2005, 2006 and 2007 Awards, with a record score! Our award winning team can be contacted seven days a week, 363 days a year.

Lines are open Monday to Friday from 8.00am to 6.00pm, Saturday from 8.30am to 2.00pm and Sunday 10.00am to 2.00pm. With trained staff to handle your call, a spares department which holds over 1 million spare parts, and a specialised team of nationwide service engineers, you know you can rely on New World.

Still trying to decide which of our products to choose? Just call 0844 815 3747 and you'll get through to one of our friendly Customer Care assistants.

Alternatively, visit our website at www.newworldappliances.co.uk, where you'll find a simple step-by-step guide to cooker selection, a list of New World retailers and an email contact facility.

The New World Customer Help Centre number is

0844 815 3747



No.1 for customer care.

Cleaning, Aftercare & Customer Care.

New World offers a range of cleaning products to help keep your cooker in tip-top condition. All of our cleaning products are available by calling the New World Spares Department on 0844 248 4170

Range Cookers

Summary	Type	New World DF91	New World 90GDO	New World 90DFDO	New World 90EDO	New World 80DF	New World 100G	New World 100DF
Hob	No of burners/elements	5	5	5	5	6	8	8
Gas hob	Burner 1 (kW)	Large (3.0)	Large (3.0)	Large (3.0)	-	Small (1.0)	Small (1.0)	Small (1.0)
	Burner 2 (kW)	Medium (1.75)	Medium (1.75)	Medium (1.75)	-	Medium (2.0)	Medium (2.0)	Medium (2.0)
	Burner 3 (kW)	Wok (3.5)	Wok (3.5)	Wok (3.5)	-	Large (3.0)	Large (3.0)	Large (3.0)
	Burner 4 (kW)	Small (1.0)	Small (1.0)	Small (1.0)	-	Medium (2.0)	Medium (2.0)	Medium (2.0)
	Burner 5 (kW)	Medium (1.75)	Medium (1.75)	Medium (1.75)	-	Small (1.0)	Small (1.0)	Small (1.0)
	Burner 6 (kW)	-	-	-	-	Medium (2.0)	Medium (2.0)	Medium (2.0)
	Burner 7 (kW)	-	-	-	-	-	Large (3.0)	Large (3.0)
	Burner 8 (kW)	-	-	-	-	-	Medium (2.0)	Medium (2.0)
	Enamel pan supports	-	-	-	-	Yes	Yes	Yes
	Cast iron pan supports	Yes	Yes	Yes	-	-	-	-
Electric hob	Push button ignition (mains)	-	-	-	-	Yes	Yes	Yes
	Automatic ignition	Yes	Yes	Yes	-	-	-	-
	Element 1 (kW)	-	-	-	17	-	-	-
	Element 2 (kW)	-	-	-	12	-	-	-
	Element 3 (kW)	-	-	-	10-18	-	-	-
	Element 4 (kW)	-	-	-	12	-	-	-
	Element 5 (kW)	-	-	-	0.7-2.1	-	-	-
Cavity 1	Easy clean ceramic plates	-	-	-	Yes	-	-	-
	Position	Top	Top-left	Top-left	Top-left	Top-left	Top-left	Top-left
Function	Function	Fanned oven & conventional grill	Conventional oven and grill	Fanned oven and grill	Fanned oven and grill	Grill	Grill	Grill
	Fuel	Electric	Gas	Electric	Electric	Electric	Gas	Electric
Gas oven/grill	Fixed rate gas grill	-	Yes	-	-	-	-	-
	Variable rate gas grill	-	-	-	-	-	Yes	-
	Conventional gas oven	-	Yes	-	-	-	-	-
	Variable rate electric grill	Yes	-	Yes	Yes - 2.0kW	Yes	-	Yes
Electric oven/grill	Fanned electric oven	Yes	-	Yes	Yes	-	-	-
	Defrost	Yes	-	-	-	-	-	-
	Energy rating	E	-	C	C	-	-	-
	Actual capacity (litres)	-	-	-	-	35	35	35
Cavity features	Usable capacity (litres)	100	61	59	60	28	24	28
	Power (kW)	(2.6)	(3.7)	(2.6)	(2.5)	(1.7)	(2.4)	(1.7)
	No of shelves	1	1	1	1	1	1	1
	No of shelf positions	4	4	4	4	2	5	5
	No of oven lights	1	1	1	1	-	-	-
	Interior finish	Enamel	Enamel	Enamel	Enamel	Wipeclean enamel	Wipeclean enamel	Wipeclean enamel
	Bottom	Bottom	Bottom	Bottom	Bottom	Bottom-left	Bottom-left	Bottom-left
Cavity 2	Function	Storage compartment/plate warmer	Storage compartment/plate warmer	Storage compartment/plate warmer	Storage compartment/plate warmer	Fanned oven	Conventional oven	Conventional oven
	Fuel	-	-	-	-	Electric	Gas	Electric
Gas oven/grill	Conventional gas oven	-	-	-	-	-	Yes	-
	Variable rate gas grill	-	-	-	-	-	-	-
Electric oven/grill	Conventional electric oven	-	-	-	-	-	-	Yes
	Fanned electric oven	-	-	-	-	Yes	-	-
	Energy rating	-	-	-	-	A	-	A
Cavity features	Actual capacity (litres)	-	-	-	-	62	62	62
	Usable capacity (litres)	33	41	41	41	52	42	52
	Power (kW)	-	-	-	-	(1.6)	(2.5)	(1.6)
	No of shelves	-	-	-	-	2	2	2
	No of shelf positions	-	-	-	-	5	15	15
	Interior finish	-	-	-	-	Wipeclean enamel	Wipeclean enamel	Wipeclean enamel
	Bottom	-	-	-	-	-	-	-
Cavity 3	Position	-	Top-right	Top-right	Top-right	Right	Top-right	Top-right
	Function	-	Conventional oven	Conventional oven	Conventional oven	Storage comp.	Conventional oven	Fanned oven
Gas oven/grill	Fuel	-	Gas	Electric	Electric	-	Gas	Electric
	Conventional gas oven	-	Yes	-	-	Yes	-	-
Electric oven/grill	Variable rate dual circuit electric grill	-	-	-	-	-	-	-
	Conventional electric oven	-	-	Yes	Yes	-	-	-
	Fanned electric oven	-	-	-	-	-	-	Yes
	Defrost	-	-	-	-	-	-	Yes
Cavity features	Energy rating	C	-	B	B	-	-	A
	Actual capacity (litres)	-	-	-	-	-	62	62
	Usable capacity (litres)	-	33	35	35	-	42	52
	Power (kW)	-	(2.2)	(1.5)	(1.5)	-	(2.5)	(1.6)
Cavity 4	No of shelves	-	4	4	4	-	15	15
	No of shelf positions	-	-	-	-	-	-	-
	Interior finish	-	Enamel	Enamel	Enamel	Painted	Wipeclean enamel	Wipeclean enamel
	Bottom	-	-	-	-	-	-	-
Cavity 4	Position	-	-	-	-	-	Bottom-right	Bottom-right
	Function	-	-	-	-	-	Storage compartment	Storage compartment
Cavity features	Interior finish	-	-	-	-	-	Wipeclean enamel	Wipeclean enamel
	Electronic clock/minute minder	Yes	Yes	Yes	Yes	Yes	Yes	Yes
Features	Fascia cooling system	-	-	-	-	Yes	Yes	Yes
	Adjustable feet	Yes	Yes	Yes	Yes	Yes	Yes	Yes
Accessories (included)	Removable cast griddle plate	-	-	-	-	-	-	-
	Grillpan/handle/trivet	Yes	Yes	Yes	Yes	Yes	Yes	Yes
Installation	Gas type	Nat Gas	Nat Gas	Nat Gas	-	Nat gas	Nat gas	Nat gas
	Gas inlet type	1/2" BSP female	1/2" BSP female	1/2" BSP female	-	1/2" BSP female	1/2" BSP female	1/2" BSP female
	Gas inlet position	Rear right	Rear right	Rear right	-	Rear centre	Rear centre	Rear centre
	LPG convertible	Yes	-	Yes	-	Yes	-	Yes
	Fuse size (A)	13	3	32	32	32	3	32
	Fitted 3 pin plug	-	Yes	-	-	-	Yes	-
	Height (mm)	900	900	900	900	900-930	900-930	900-930
Dimensions Product	Width (mm)	898	898	898	898	796	996	996
	Depth (mm)	600	600	600	600	595	595	595
	Weight (kg)	80	86	86	71	73	89	89
	Height (mm)	830	850	850	850	1035	1035	1035
Packed Dimensions	Width (mm)	960	960	960	960	1130	1130	1130
	Depth (mm)	690	690	690	690	720	720	720
	Weight (kg)	87	95	95	95	73	89	89
Finishes & codes	Stainless steel	444447097	444447109	444447110	444449032	-	444447100	444447102
	Satin steel	-	-	-	-	444447098	444447099	444447101
	Charcoal	-	-	-	-	-	-	-

Freestanding Cookers

Summary	Type	New World G50S	New World G55T	New World G60D	New World ES50S	New World E60D	New World 50HLG	New World 55HLG	New World 55TWLG (Nat Gas)	New World 55TWLG (LP Gas)	New World 60TWLG (LP Gas)
Hob Gas hob	Type No of burners/elements	4	4	4	4	4	4	4	4	4	4
	Front left (kW)	Large (3.0)	Small (1.0)	Small (1.0)	-	-	Small (1.0)	Small (1.0)	Small (1.0)	Small (1.0)	Small (1.0)
	Rear left (kW)	Medium (1.75)	Medium (2.0)	Medium (2.0)	-	-	Medium (2.0)	Medium (2.0)	Medium (2.0)	Medium (2.0)	Medium (2.0)
	Rear right (kW)	Medium (1.75)	Medium (2.0)	Medium (2.0)	-	-	Medium (2.0)	Medium (2.0)	Medium (2.0)	Medium (2.0)	Medium (2.0)
	Front right (kW)	Small (1.0)	Large (3.0)	Large (3.0)	-	-	Large (3.0)	Large (3.0)	Large (3.0)	Large (3.0)	Large (3.0)
	Wire pan supports-gloss enamel	Yes	Yes	Yes	-	-	Yes	Yes	Yes	Yes	Yes
	Cast iron pan supports - matt enamel	-	-	-	-	-	-	-	-	-	-
	Push button ignition (battery)	-	-	-	-	-	Yes	-	-	-	-
	Push button ignition (mains)	Yes	Yes	Yes	-	-	-	Yes	Yes	Yes	Yes
	Automatic ignition	-	-	-	-	-	-	-	-	-	-
Electric hob	Glass lid with auto shutoff	-	-	-	-	-	-	-	-	-	-
	Glass lid with SBS	-	-	Yes	-	-	-	-	-	-	-
	Front left (kW)	-	-	-	Large solid plate (15)	Small ceramic (11)	-	-	-	-	-
	Rear left (kW)	-	-	-	Small solid plate (10)	Large ceramic (17)	-	-	-	-	-
	Rear right (kW)	-	-	-	Large solid plate (15)	Small ceramic (11)	-	-	-	-	-
	Front right (kW)	-	-	-	Small solid plate (10)	Large ceramic (17)	-	-	-	-	-
	Easy clean ceramic glass surface	-	-	-	-	Yes	-	-	-	-	-
	Function	-	-	-	-	-	-	-	-	-	-
	Fuel	-	-	-	-	-	Gas	Gas	-	-	-
	Power(kW)	-	-	-	-	-	3.5	3.5	-	-	-
Top Cavity	Function	-	Grill	Conventional oven and grill	-	Conventional oven and grill	-	-	Grill	Grill	Grill
Gas oven/grill	Fuel	-	Gas	Gas	-	Electric	-	-	Gas	Gas	Gas
	Fixed rate gas grill	-	-	Yes	-	-	-	-	-	-	-
	Variable rate gas grill	-	Yes	-	-	-	-	-	Yes	Yes	Yes
	Conventional gas oven	-	-	-	-	-	-	-	-	-	-
Electric oven/grill	Fixed rate electric grill	-	-	-	-	Yes	-	-	-	-	-
	Variable rate electric grill	-	-	-	-	-	-	-	-	-	-
	Conventional electric oven	-	-	-	-	Yes	-	-	-	-	-
	Top heat only	-	-	-	-	Yes	-	-	-	-	-
Cavity features	Base heat only	-	-	-	-	Yes	-	-	-	-	-
	Energy rating	-	-	-	-	B	-	-	-	-	-
	Actual capacity (litres)	-	39	39	-	39	-	-	39	39	39
	Usable capacity (litres)	-	27	27	-	31	-	-	27	27	27
Main Cavity	Power (kW)	-	2.4	Oven (18) Grill (24)	-	Oven (13) Grill (17)	-	-	2.4	2.4	2.4
	No of shelves	-	1	1	5	2	-	-	1	1	1
	No of shelf positions	-	2	2	5	2	-	-	5	5	5
	Function	Conventional oven and grill	Conventional oven	Conventional oven	Conventional oven	Fanned oven	Conventional oven	Conventional oven	Conventional oven	Conventional oven	Conventional oven
Gas oven/grill	Fuel	Gas	Gas	Gas	Electric	Electric	Gas	Gas	Gas	Gas	Gas
	Fixed rate gas grill	Yes	-	-	-	-	-	-	-	-	-
	Conventional gas oven	Yes	Yes	Yes	-	-	Yes	Yes	Yes	Yes	Yes
	Conventional electric oven	-	-	-	Yes	-	-	-	-	-	-
Electric oven/grill	Fanned electric oven	-	-	-	-	Yes	-	-	-	-	-
	Defrost	-	-	-	-	Yes	-	-	-	-	-
	Base heat only	-	-	-	Yes	-	-	-	-	-	-
	Energy rating	-	-	-	A	A	-	-	-	-	-
Cavity features	Actual capacity (litres)	-	69	69	55	69	62	69	69	69	69
	Usable capacity (litres)	47	48	48	47	59	42	48	48	48	48
	Power (kW)	Oven (19) Grill (19)	25	25	Oven (20) Grill (15)	2.3	2.5	2.5	2.5	2.4	2.4
	No of shelves	1	2	2	5	2	2	2	2	2	2
Storage Compartment Features	No of shelf positions	5	5	5	5	5	15	5	15	15	15
	Storage compartment	-	-	-	-	-	Yes	Yes	-	-	-
	Fascia cooling system	-	Yes	Yes	-	Yes	-	-	Yes	Yes	Yes
	Adjustable feet	Yes	Yes	Yes	Yes	Yes	Yes	Yes	Yes	Yes	Yes
Accessories (included)	Grillpan/handle/trivet	Yes	Yes	Yes	Yes	Yes	Yes	Yes	Yes	Yes	Yes
	Gas type	Nat gas	Nat gas	Nat gas	-	-	Nat gas	Nat gas	Nat gas	LP gas	LP gas
	Gas inlet type	1/2" BSP female	1/2" BSP female	1/2" BSP female	-	-	1/2" BSP female	1/2" BSP female	1/2" BSP female	1/2" BSP female	1/2" BSP female
	Gas inlet position	Rear right	Rear right	Rear right	-	-	Rear right	Rear right	Rear right	Rear right	Rear right
Dimensions Product	Fuse size (A)	3	3	3	32	32	-	-	3	3	3
	Fitted 3 pin plug	Yes	Yes	Yes	-	-	-	Yes	Yes	Yes	Yes
	Height (mm)	885-915	900-930	900-930	885-915	900-930	1412-1440	1450-1480	900-930	900-930	900-930
	Width (mm)	500	552	602	500	602	502	552	552	552	602
Packed Dimensions	Depth (mm)	600	602	602	600	602	602	602	602	602	602
	Weight(kg)	43	418	55	44	50.8	419	46.9	418	418	45.8
	Height (mm)	950	1025	1025	950	1025	1110	1110	1025	1025	1025
	Width (mm)	580	665	715	580	715	610	660	665	665	715
Finishes & codes	Depth (mm)	690	715	715	690	715	710	710	715	715	715
	Weight (kg)	47	46	55	48	55	45	50	46	46	54
	Stainless steel	444449048	-	-	444449049	-	-	-	444445699	444445701	444448231
	Satin steel	-	-	444447221	-	444447228	-	-	-	-	-
	White	444449042	444447231	444447218	444449044	444447227	200530049	200540159	-	-	-
	Silver	444449043	444447232	-	444449045	-	-	-	-	-	-
	Black	-	-	-	-	-	444449192	444449193	444445700	444445702	444448232

Built-in Ovens

Summary	Type	New World NW60G	New World NW70G	New World NW90G	New World NW60F	New World NW60FP	New World NW70DO	New World NW90DO
Top Cavity	Function	-	Grill	Grill	-	-	Conventional oven and grill	Conventional oven and grill
	Fuel	-	Gas	Gas	-	-	Electric	Electric
Gas oven/grill	Variable rate gas grill	-	Yes	Yes	-	-	-	-
	Automatic ignition	-	Yes	Yes	-	-	-	-
Electric oven/grill	Fixed rate dual circuit grill	-	-	-	-	-	Yes	Yes
	Conventional electric oven	-	-	-	-	-	Yes	Yes
	Energy rating	-	-	-	-	-	C	C
Cavity features	Actual capacity (litres)	-	39	39	-	-	39	39
	Usable capacity (litres)	-	29	29	-	-	31	31
	Power (kW)	-	2.3	2.3	-	-	Oven 1.3 Grill 2.6	Oven 1.3 Grill 2.6
	No of shelves	-	1	1	-	-	1	1
	No of shelf positions	-	2	2	-	-	2	5
	No of oven lights	-	-	-	-	-	Single rear	Single rear
Main Cavity	Function	Conventional oven and grill	Conventional oven	Conventional oven	Fanned Oven	Fanned Oven and grill	Fanned oven	Fanned oven
	Fuel	Gas	Gas	Gas	Electric	Electric	Electric	Electric
Gas oven/grill	Fixed rate gas grill	Yes	-	-	-	-	-	-
	Conventional gas oven	Yes	Yes	Yes	-	-	-	-
	Automatic ignition	Yes	Yes	Yes	-	-	-	-
Electric oven/grill	Fixed rate electric grill	-	-	-	-	-	-	-
	Variable rate electric grill	-	-	-	Yes	Yes	-	-
	Conventional electric oven	-	-	-	-	-	-	-
	Fanned electric oven	-	-	-	Yes	Yes	Yes	Yes
	Defrost	-	-	-	Yes	Yes	Yes	Yes
	Grill with fan	-	-	-	Yes	Yes	-	-
	Energy rating	-	-	-	B	A	B	A
	Base heat only	-	-	-	-	-	-	-
	Top heat only	-	-	-	-	-	-	-
Cavity features	Actual capacity (litres)	69	59	69	69	69	59	69
	Usable capacity (litres)	51	44	51	54	54	50	58
	Power (kW)	Oven 2.5 Grill 2.4	2.5	2.5	Oven 2.3 Grill 1.6	Oven 2.0 Grill 1.85	2.3	2.3
	No of shelves	2	2	2	2	2	2	2
	No of shelf positions	5	5	5	15	5	5	15
	No of oven lights	Single Rear	Single Rear	Single Rear	Single Rear	Single Rear	Single Rear	Single Rear
Timer	Mechanical timer	-	-	-	Yes	-	-	-
	Electronic clock/minute minder	Yes	Yes	Yes	-	-	-	-
	Electronic clock/programmer	-	-	-	-	-	Yes	Yes
Cooling	Fan/cooling system	Yes	Yes	Yes	Yes	Yes	Yes	Yes
Accessories (included)	Grillpan/handle/trivet	Yes	Yes	Yes	Yes	Yes	Yes	Yes
Removable Parts (for cleaning)	Inner door glass	Yes	Yes	Yes	Yes	Yes	Yes	Yes
	Shelves	Yes	Yes	Yes	Yes	Yes	Yes	Yes
	Shelf runners	Yes	Yes	Yes	Yes	Yes	Yes	Yes
Compatibility	Hob available to match oven	Yes	Yes	Yes	Yes	Yes	Yes	Yes
Installation	Gas type	Nat gas	Nat gas	Nat gas	-	-	-	-
	Gas inlet type	1/2" BSP female	1/2" BSP female	1/2" BSP female	-	-	-	-
	Gas inlet position	Back Right	Back Right	Back Right	-	-	-	-
	Fuse size (A)	3	3	3	13	13	32	32
Installation Product	Height (mm)	585	703	885	585	585	703	885
	Width (mm)	595	595	595	595	595	595	595
	Depth (mm)	550	550	550	550	550	550	550
	Weight (kg)	26.8	43.7	46.5	26.8	26.8	43.7	46.5
Packed Dimensions	Height (mm)	725	845	1025	725	725	845	1025
	Width (mm)	660	401	660	660	660	660	660
	Depth (mm)	720	720	720	720	720	720	720
	Weight (kg)	33	45	50	33	33	45	50
Finishes & codes	Satin steel	444447275	444447277	444447279	444447283	444449615	444447287	444447289
	White	444447276	444447278	444447280	444447284	-	444447288	444447290

Built-in Hobs

Summary	Type	Newworld NWC60	Newworld NWSHU60	Newworld NWGHU60	Newworld NWGHU70	Newworld NWT60
Hob	No of burners/elements	4	4	4	5	4
Gas hob	Front left (kW)	-	-	Rapid [2.5]	Auxiliary [1.1]	-
	Rear left (kW)	-	-	Semi-Rapid [1.8]	Semi-Rapid [1.8]	-
	Rear right (kW)	-	-	Semi-Rapid [1.8]	Rapid [2.5]	-
	Front right (kW)	-	-	Auxiliary [1.1]	Semi-Rapid [1.4]	-
	Centre (kW)	-	-	-	Wok [3.5]	-
	Enamel pan supports	-	-	Yes	Yes	-
	Push button ignition (mains)	-	-	Yes	Yes	-
Electric hob	Front left (kW)	Large ceramic 2.1	Medium solidplate 1.5	-	-	Large ceramic 1.8
	Rear left (kW)	Small ceramic 1.2	Small solidplate 1.0	-	-	Small ceramic 1.2
	Rear right (kW)	Medium ceramic 1.8	Large solidplate high-speed 2.0	-	-	Large ceramic 2.0
	Front right (kW)	Small ceramic 1.2	Small solidplate 1.0	-	-	Small ceramic 1.5
	Easy clean ceramic glass surface	Yes	-	-	-	Yes
Features	Rotary controls	Yes	Yes	Yes	Yes	-
Removable Parts (for cleaning)	Hob burners	-	-	Yes	Yes	-
	Pan supports	-	-	Yes	Yes	-
Compatibility	Oven available to match hob	Yes	Yes	Yes	Yes	Yes
Installation	Gas type	-	-	Nat Gas	Nat Gas	-
	Gas inlet type	-	-	1/2" Male	1/2" Male	-
	Gas inlet position	-	-	RHS Rear	RHS Rear	-
	LPG convertible	-	-	Kit Available to Order	Kit Available to Order	-
	Fuse size (A)	32	32	3	3	32
Dimensions Product	Width (mm)	580	580	580	680	578
	Depth (mm)	510	500	500	500	504
	Weight (kg)	7.6	12.5	8	11	8.5
	Height above worktop (mm)	5	10	35	31	6
	Depth below worktop (mm)	50	40	40	40	40
	Cutout width (mm)	560	553	553	553	558
	Cutout depth (mm)	495	473	473	473	484
Packed Dimensions	Height (mm)	140	105	105	130	130
	Width (mm)	670	650	650	760	650
	Depth (mm)	560	590	590	600	570
	Weight (kg)	8.5	12.3	8	10.6	9.2
Finishes & codes	Stainless steel	-	444447293	444447291	444447296	-
	Colour - control knob	-	-	Silver	444447297	-
	White enamel	-	444447294	444447292	Silver	-
	Colour - control knob	-	White	White	-	-
	Black ceramic glass	444448847	-	-	-	444448224
	Colour - control knob	Metallic silver	-	-	-	-

Hoods

Summary	Type	New World Chim 60	New World 600CGH	New World Chim 70	New World 700CGH	New World Chim 80	New World Chim 90	New World 900CGH	New World Chim 100
Features	No of fan speeds	3	3	3	3	3	3	3	3
	Lights - traditional	2	-	2	-	2	2	-	2
	Slider control	-	-	-	-	-	-	-	-
	Push button	Yes	Yes	Yes	Yes	Yes	Yes	Yes	Yes
	Grease filter(s)	2	1	2	1	2	3	1	3
	Halogen lights	-	2	-	2	-	-	2	-
Extraction	Max extraction rate (m3/h)	350	380	350	380	350	350	380	350
	Motor rating (W)	120	150	150	150	120	120	150	120
	Max noise level (dBA) (acoustic pressure)	52	52	59	52	52	52	52	52
	Position of ducting outlet	Top	Top	Top	Top	Top	Top	Top	Top
Installation	Ducting kit dia (mm)	150	120/150	120/150	120/150	150	150	120/150	150
	Height (excl chimney where fitted) (mm)	190	100	260	100	260	190	100	190
Dimensions Product	Width (mm)	600	600	700	700	800	900	900	1000
	Depth (mm)	485	490	495	490	495	485	490	485
	Weight (kg)	10.98	13	13.00	13	10.05	12.84	16.3	12.84
	Chimney height (incl hood) (mm)	560/905	535/965	755/1100	535/965	616/965	560/905	535/965	560/905
	Chimney width (mm)	250	318	250	318	250	318	250	318
	Chimney depth (mm)	183	259	183	259	183	259	183	183
	Min height above hob (mm)	650	650	730	650	650	650	650	650
Packed Dimensions	Height (mm)	575	615	580	615	584	979	615	575
	Width (mm)	680	690	780	690	979	373	990	1080
	Depth (mm)	375	430	375	430	373	575	430	375
	Weight (kg)	13.5	13	16	14.1	16.5	17	19.7	11.2
Finishes & codes	Stainless steel	444448843	444448742	444448803	444448743	444445421	444448844	444448744	444448842
	Black	-	-	-	-	-	-	-	444448841
	Silver	-	-	-	-	-	-	-	-
	No of charcoal filters required	2	2	2	2	2	2	2	2
	Charcoal filter part no	082620630	082620630	082620630	082620630	082620630	082620630	082620630	082620630
Optional extras (not supplied)	Ducting kit part no - 125mm dia x 1m length	082611309	082611309	082611309	082611309	082611309	082611309	082611309	082611309
	Ducting kit part no - 125mm dia x 3m length	082611310	082611310	082611310	082611310	082611310	082611310	082611310	082611310

Cooling

Summary	Type	New World NW802LA	New World NW802FZ	New World NW5052FF	New World NWFF5052FF	New World NWFF7031FF	New World NW7032FF	New World 150SSWC	New World 300SSWC	New World 600SSWC
Features	Total Gross Capacity (ltrs)	130	96	242	230	280	283	-	55	142
	Total Net Capacity (ltrs)	128	87	224	217	233	244	7 (bottles)	53	140
	Frost Free Operation	-	-	-	Yes	Yes	-	-	-	-
	Dual control Thermostat	-	-	-	-	-	-	Yes	-	Yes
	Handle type	None Integrated	None Integrated	None Integrated	None Integrated	None Integrated	None Integrated	-	Exterior	Exterior
	Hinge type	Product	Product	Product	Product	Product	Product	-	-	-
		Heavy duty	Heavy duty	Slider	Slider	Slider	Slider	-	-	-
	Reversible doors	Yes	Yes	Yes	Yes	Yes	Yes	Yes	Yes	Yes
Technical Specification	CFC/HFC free	Yes	Yes	Yes	Yes	Yes	Yes	Yes	Yes	Yes
	Refrigerant type	R600a	R600a	R600a	R600a	R600a	R600a	R600a (12g)	R134a	R134a
	Energy rating	A	A	A	A	A	A	-	-	-
	Energy Consumption (Kwh/year)	151	205	296	297	299	297	-	-	-
	Noise Level dB(A)	39	39	41	41	41	41	-	40	40
	Replaceable door gaskets	Yes	Yes	Yes	Yes	Yes	Yes	-	-	-
	Power cut safe time (hrs)	11	11	14	20	20	20	-	-	-
	Temperature warning light	-	Yes	-	-	-	-	-	-	-
	Mains light	-	Yes	-	-	-	-	-	-	-
	Climate class	SN	SN	SN	SN	SN	SN	N	N	N
Fridge Specification	Gross Capacity (litres)	130	-	156	156	220	220	-	55	142
	Net Capacity (litres)	128	-	155	155	189	189	-	53	140
	Adjustable thermostat	Yes	-	Yes	Yes	Yes	Yes	-	Yes	Yes
	Defrost Function	Automatic	-	Automatic	Automatic	Automatic	Automatic	-	-	-
	Interior light	Yes	-	Yes	Yes	Yes	Yes	Yes	Yes	Yes
Furniture	Door racks	Transparent plastic	-	Solid white	Solid white	Solid white	Solid white	-	-	-
	Dairy Compartment with lid	1	-	1	1	1	1	-	-	-
	Bottle shelf	1	-	1	1	1	1	-	-	-
	Door storage	0	-	1	1	2	2	-	-	-
	Egg trays	1	-	-	1	1	1	-	-	-
	Shelf type	Wire	-	Wire	Glass	Glass	Glass	-	Wood	Wood
	Number of shelves	2 + 1 half depth + crisper cover	-	3 + salad crisper cover	3 + salad crisper cover	3 + salad crisper cover	3 + salad crisper cover	6	6	5
	Salad drawer(s)	Hidden compartment	-	2 half depth	2 half depth	2 half depth	2 half depth	-	-	-
	Salad drawer cover	Glass	-	Glass	Glass	Glass	Glass	-	-	-
Freezer Specification	Gross Capacity (litres)	-	96	86	63	55	63	-	-	-
	Net Capacity (litres)	-	87	69	62	48	55	-	-	-
	Star Rating	-	4	4	4	4	4	-	-	-
	Fast freeze	-	Yes	-	-	-	-	-	-	-
	Adjustable thermostat	-	Yes	Controlled by fridge thermostat	Controlled by fridge thermostat	Controlled by fridge thermostat	Controlled by fridge thermostat	-	-	-
	Defrost Function	-	Manual	Manual	Frost free	Frost free	Manual	-	-	-
Furniture	Freezer capacity (kg/24 hrs)	-	9	4	3.5	2.5	4	-	-	-
	Freezer front type	-	Transparent plastic	Transparent plastic	Transparent plastic	Transparent plastic	Transparent plastic	-	-	-
	No of drawers/baskets	-	3	3	3	2	3	-	-	-
	Freezer shelf with flap	-	0	1	1	1	0	-	-	-
	Hidden compartment at bottom	-	1	-	-	-	-	-	-	-
Installation	Ice Cube tray	-	Yes	Yes	Yes	Yes	Yes	-	-	-
	Current (A)	0.21	0.24	0.5	0.5	0.62	0.53	0.45	0.9	1.1
	Connection Rating (W)	50	50	90	100	100	120	60	100	160
	Leveling feet	Yes	-	-	-	-	4	Yes	Yes	Yes
	Fuse rating (A)	13	13	13	13	13	13	13	13	13
Dimensions product	Fitted 3 pin plug	Yes	Yes	Yes	Yes	Yes	Yes	Yes	Yes	Yes
	Height (mm)	820	820	1770	1770	1770	1770	870	865	865
	Width (mm)	598	598	540	540	540	540	145	295	595
	Depth (mm)	545	545	535	535	535	535	425	572	572
Dimensions packed	Weight (kg)	30	33	58	60	58	58	18.5	30	48
	Height (mm)	880	880	1840	1840	1840	1840	905	900	870
	Width (mm)	630	630	575	575	575	575	180	355	655
	Depth (mm)	575	575	565	565	565	565	520	640	665
Finishes & codes	Weight (kg)	33	36	65	63	63	63	19.75	34	52
	Integrated	444449022	444449023	444449024	444449190	444448797	444449025	-	-	-
	Silver	-	-	-	-	-	-	444448745	-	444448746
	Stainless Steel	-	-	-	-	-	-	444449553	-	-

Splashbacks

Summary	Type	New World SBK60	New World SBK60R	New World SBK70	New World SBK80	New World SBK90	New World SBK90R	New World SBK100	New World SBK100R
Features	Rail	-	Yes	-	-	-	Yes	-	Yes
Dimensions Product	Height (mm)	750	750	750	750	750	750	750	750
	Width (mm)	600	600	700	800	900	900	1000	1000
	Fixing hole centre from vertical edge (mm)	150.0	50	125.0	150.0	150	200	150	150
	Fixing hole centre from top/ bottom edges (mm)	6	100	6	6	6	100	6	100
	Rail hole centre from vertical edge	-	120	-	-	-	155	-	205
	Weight (kg)	4.37	4.92	5.15	6.4	6.8	7.3	7.24	8
Packed Dimensions	Height (mm)	870	1010	870	870	870	1010	870	1010
	Width (mm)	655	655	755	855	955	955	1055	1055
	Depth (mm)	30	30	30	30	30	30	30	30
	Weight (kg)	6.5	7	7.5	8.7	9.9	10.6	11.2	12
Finishes & codes	Stainless steel	444449519	444449520	444449522	444449523	444449524	444449525	444449527	444449528
	Black	444449521	-	-	-	444449526	-	444449529	-

Dishwashers

Summary	Type	DW60	DW45
Features	No of place settings	12	8
	No of temperature levels	4	3
	Delay timer	Yes	-
	Drying type	Residual heat	Residual heat
	Rinse aid refill indicator	Yes	Yes
	Salt refill indicator	Yes	Yes
	Adjustable water softener	Yes	Yes
	Overflow protection	Yes	Yes
	Adjustable upper basket	-	-
	Removable Cutlery basket	(2)	(2)
	Adjustable racking	Yes	Yes
	Half load	Yes	-
Programmes	No of programmes	5	5
	Normal wash	Yes	Yes
	Rinse and hold	-	-
	Intensive wash	Yes	Yes
	Pre-rinse	Yes	Yes
	Economy wash	Yes	Yes
	Soak	Yes	Yes
Performance	Rapid/quick wash	-	Yes
	Water consumption (litres/cycle)	15	13
	Energy Consumption (kWh/cycle)	1.05	0.88
	Energy rating	A	B
	Cleaning rating	B	A
	Drying rating	B	B
Installation	Noise level (dB)	53	53
	Fuse size (A)	13	13
	Fitted 3 pin plug	Yes	Yes
Dimensions Product	Height (mm)	850	810-870
	Width (mm)	600	450
	Depth (mm)	580	580
	Weight (kg)	40	35
Dimensions Packed	Height (mm)	885	885
	Width (mm)	630	480
	Depth (mm)	630	630
	Weight (kg)	50.5	43
Finishes & codes	Integrated (White)	444445899	444448798



www.newworldappliances.co.uk

Our policy is one of constant development and improvement. Whilst this brochure is accurate at the time of printing, you are advised to check these specifications with the product. It is intended to help with your purchasing decision. It is not intended to replace the installation manual which provides more detailed information and should not be disregarded if specifications and/or appearances are changed in the interest of continuous improvement. All appliances featured in this brochure are CE marked as complying with the relevant appliance directives, produced under surveillance to BS EN ISO9000 series. Appliances can become very hot with use and retain their heat for a long period of time after use. Children should be supervised at all times and should not be allowed to touch the hot surfaces or be in the vicinity when in use or until the appliance has cooled after use. All technical data are taken under laboratory conditions and may vary in use. Ratings specified are quoted at 230V, products are approved for use on a 220-240V ~ 50Hz supply. The statutory rights of the consumer are not affected.

Part No. 082530092

08/2009

Stoney Lane, Prescott,
Merseyside L35 2XW
Customer Care: 0844 815 3747
Product Helpline: 0844 248 4149
Glen Dimplex Home Appliances
Website: www.newworldappliances.co.uk

