

Serie | 8

Compact oven with microwave
CNG6764S6B



Included accessories

2 x combination grid
1 x universal pan

Optional accessories

HEZ6RCC0 : Cookbook

The compact steam oven with PerfectBake, PerfectRoast, microwave and added steam: for perfect crispy results, even when time is short.

- **PerfectBake Sensor and PerfectRoast thermometer:** the easy way to perfect baking and roasting results.
- **BoschAssist:** automatic setting of the optimal type of heat, temperature and time for countless dishes.
- **TFT touchscreen control:** easy-to-use thanks to the control ring with full text and images.
- **Home Connect:** home appliances with smart connectivity for an easier everyday life.
- **Pyrolytic self-cleaning:** no cleaning effort thanks to automatic self-cleaning.
- Drop down door with SoftClose mechanism

Technical Data

| | |
|--------------------------------------|---------------------|
| Type of micro-wave oven : | MW-Combi |
| Type of control : | Electronic |
| Color / Material Front : | Stainless steel |
| Dimensions of the product (mm) : | 455 x 594 x 548 |
| Cavity dimensions (mm) : | 237.0 x 480 x 392.0 |
| Length electrical supply cord (cm) : | 150 |
| Net weight (kg) : | 41.4 |
| Gross weight (kg) : | 44.0 |
| EAN code : | 4242002952468 |
| Maximum micro-wave power (W) : | 900 |
| Connection Rating (W) : | 3600 |
| Current (A) : | 16 |
| Voltage (V) : | 220-240 |
| Frequency (Hz) : | 60; 50 |
| Plug type : | no plug |



Serie | 8 Microwave oven

Compact oven with microwave CNG6764S6B

The compact steam oven with PerfectBake, PerfectRoast, microwave and added steam: for perfect crispy results, even when time is short.

Design

- 3x 2,5"-TFT colour and graphics display with direct touch function
- Drop down door, SoftClose, SoftOpen
- Stainless steel control wheel
- Straight bar handle
- Cavity inner surface: Enamel anthracite

Features

- Digital temperature display with proposal
Actual temperature display
Heating-up indicator
Sabbath setting
- Electronic door lock
Control panel lock
Automatic safety switch off
Residual heat indicator
Start button
Door contact switch
- Intelligent microwave inverter technology: For optimised results maximum output power will be regulated to 600 W when used in longer operation for gentler cooking.
- BoschAssist
- PerfectBake sensor
PerfectRoast meatprobe
- Electronic clock timer
- Main on/off switch
- LED light
- Light on/off when oven door opened/closed
- 3 shelf positions
- Water tank empty indicator
- Integral cooling fan

Cleaning

- Pyrolytic self-cleaning function
- Microwave top door

Programmes/functions

- Compact oven with microwave with the heating functions:
Microwave, conventional top and bottom heat, Hotair grilling, full width variable grill, half width grill, pizza function, bottom heat, intensive heat, low temperature cooking, plate warming, Dehydrate, keep warm
- Compact oven with microwave with 14 heating methods:
4D Hotair, Hotair Gentle, conventional top and bottom heat, conventional heat Gentle, Hotair grilling, full width variable

grill, half width grill, pizza function, bottom heat, intensive heat, low temperature cooking, plate warming, Dehydrate, keep warm

- Additional heating methods with microwave: Microwave, Combi microwave variable
- Additional heating methods with steam: reheating, Dough proving
- Additional functions:
Descaling programme
Drying function
- Max. Power: 900 W; 5 Microwave power settings (90 W, 180 W, 360 W, 600 W, 900 W)
- Fast pre-heating function

Standard accessories

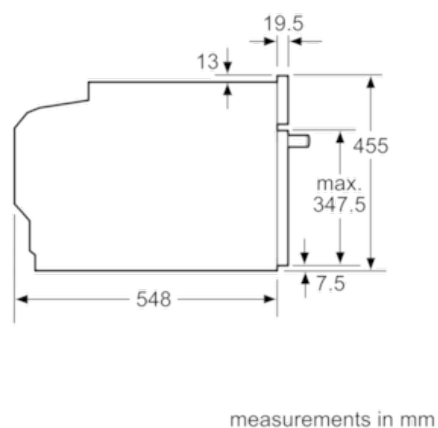
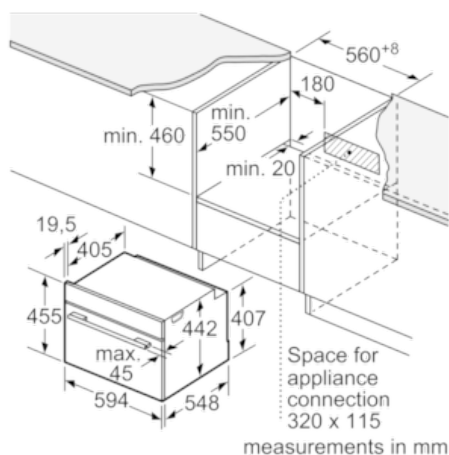
- 1 level telescopic shelf, standard extension, pyrolytic proof
- 2 x combination grid, 1 x universal pan

Performance/technical information

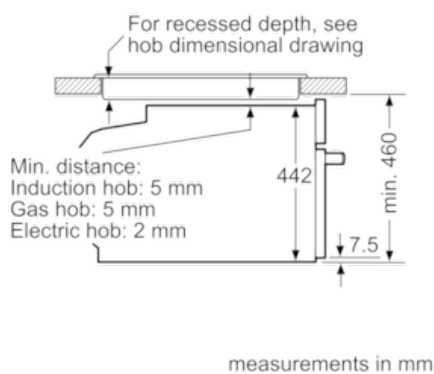
- Cavity volume: 45 l
- Stirrer fan distribution
- Microwave inverter technology
- 1 l Water tank
- Length of mains cable: 150 cm
- Total connected load electric: 3.6 KW
- Nominal voltage: 220 - 240 V
- Appliance dimension (h x w x d): 455 mm x 594 mm x 548 mm
- Niche dimension (h x w x d): 450 mm - 455 mm x 560 mm - 568 mm x 550 mm
- Please refer to the dimensions provided in the installation manual

Serie | 8 Microwave oven

Compact oven with microwave CNG6764S6B



Installation with a hob.



If the compact appliance will be installed underneath a hob, the following worktop thicknesses (including substructure if necessary) must be taken into account.

| Hob type | min. worktop thickness | |
|----------------------------|------------------------|-------|
| | fitted | flush |
| Induction hob | 42 mm | 43 mm |
| Full surface Induction hob | 52 mm | 53 mm |
| Gas hob | 32 mm | 43 mm |
| Electric hob | 32 mm | 35 mm |

