



Neff
V6320X0GB
Washer-dryer

Predecessor:

Successor:

EAN code:
4242004130437
sales programme:

V6320X0GB Automatic washer dryer

Performance

- B energy, A wash and B spin class
- Energy consumption wash and dry 4.85 kWh Water consumption wash and dry 83 litres
- Capacity: washing 6 kg : drying 3 kg
- Spin speed selection 1400 to 600 rpm
- Drum volume: 52 litres
- Non-stop wash and dry programme 4 kg
- Noise level: washing 57 dB (re 1pW), Noise level: spinning 74 dB (re 1pW)

Key features

- Fully electronic control dial for all wash and special programmes
- Timed Programmes

Additional features

- Aquatronic wash system
- Safeguard monitoring system adjusts load distribution
- Foam detection system
- Buzzer to indicate the end of cycle
- Child lock
- Reload facility
- Metal door catch

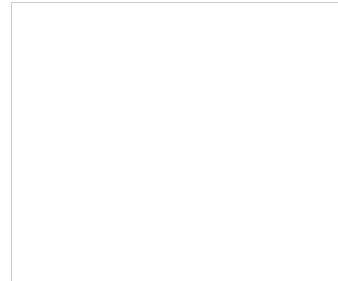
Programmes

- Special programmes: mix 30°C, Cold, Delicates
- Special Programme: Fluff removal cycle
- Buttons: Start, Spin speed reduction, Menu, drying time,

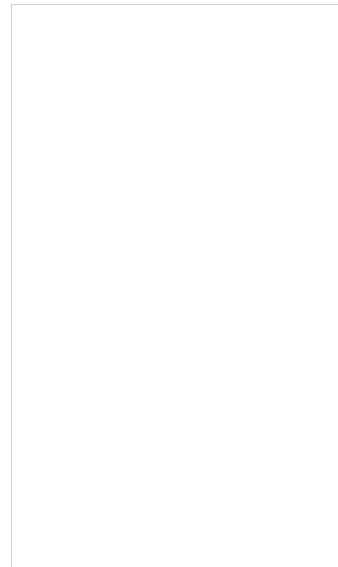
Design

- Display for programme progress indication, time remaining and 19 hours time delay
- 30 cm porthole door with 95 degree opening
- Door hinged on left
- Decor door is reversible
- Dimensions (H X W X D): 82 x 59.5 x 58.4 cm
- Fully integratable

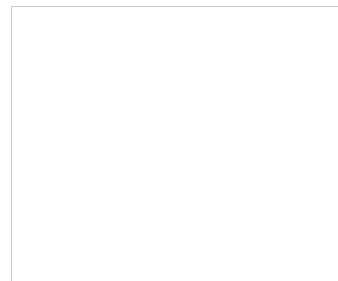
Included accessories



Optional accessories



Alternative colors available



Technical Data

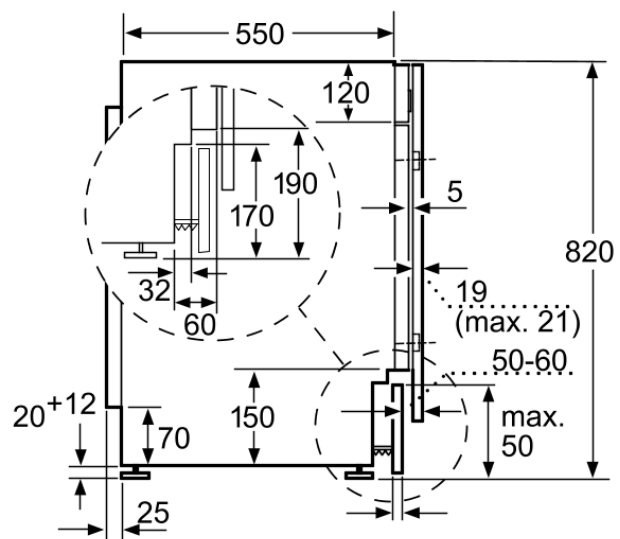
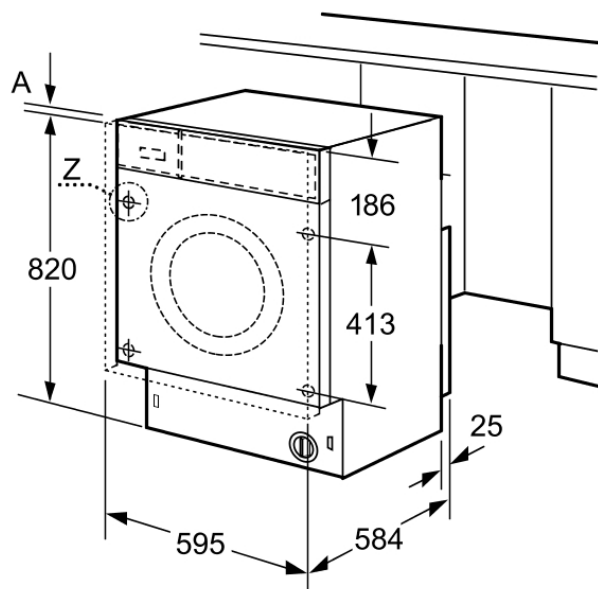
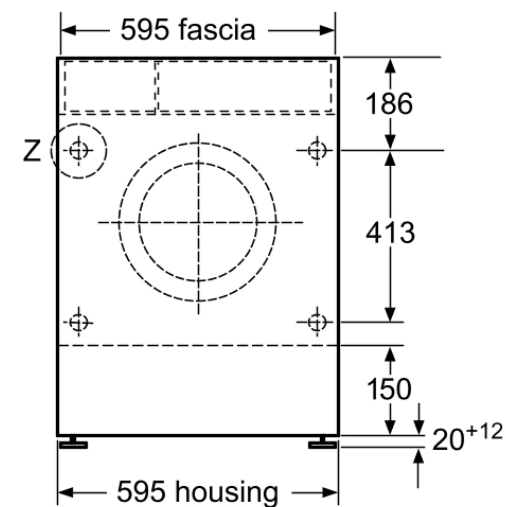
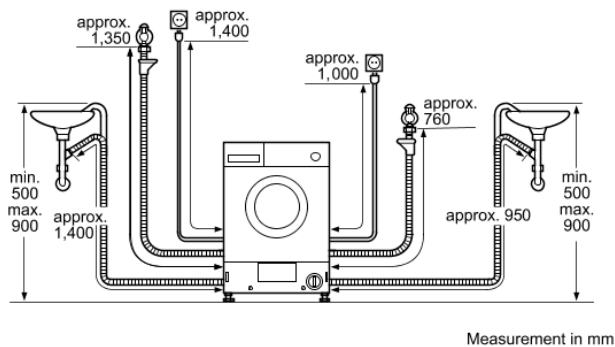
Characteristics

Removable top : No
Door hinge : Left-hand
Length electrical supply cord (m) : 220.0
Height with worktop (mm) : 820
Dimensions of the product (mm) : 820 x 595 x 584
Net weight (kg) : 81.00
Drum volume (l) : 52

Consumption and connection features

Connection Rating (W) : 2300
Current (A) : 10
Voltage (V) : 220-240
Frequency (Hz) : 50
Approval certificates : CE, VDE
Energy consumption (wash and dry of full wash load) (kWh) : 4.85
Energy consumption (wash only) (kWh) : 1.02
Water consumption (wash and dry full wash load) (l) : 83

V6320X0GB
Automatic washer dryer



Z detail

