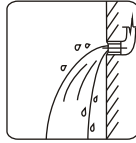


Taylor & Moore

Guide for installation

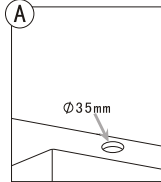


NOTE: CLEAN THE PIPE BEFORE INSTALLATION.

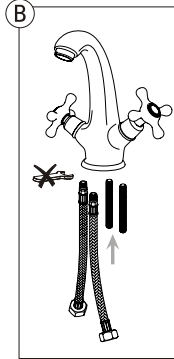


■ FAUCET INSTALLATION STEPS:

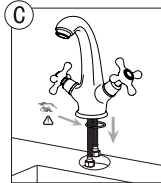
1. Before installation, please make sure there is a hole (Ø35) on the table-board. Refer to draft (A)



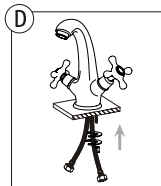
2. To fix the screw and flexible hose in turn. Refer to draft (B)



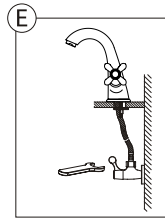
3. Place the washer over the hoses and drop the hoses through the cut out in the sink, lowering the tap into position. Refer to draft (C)



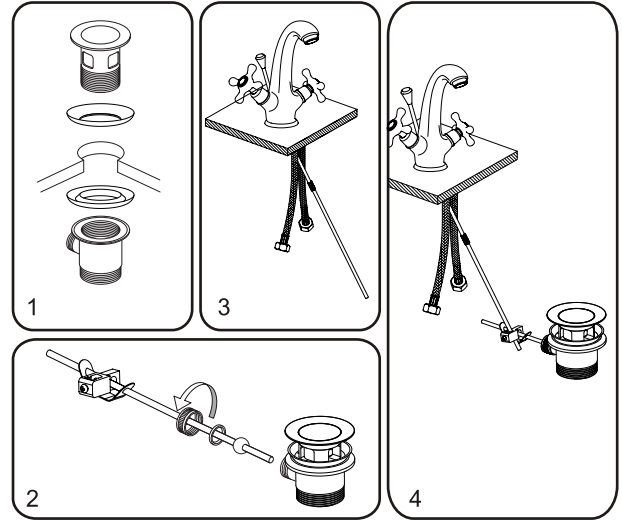
4. Put the plastic washer and metal washer on the screw and tighten the screw nut to fix the faucet on the table-board. Refer to draft (D)



5. Connect the hoses to the relevant hot or cold mains feed and tighten with a wrench. Turn on the water supply and observe all joints to check for leaks. Refer to draft (E)

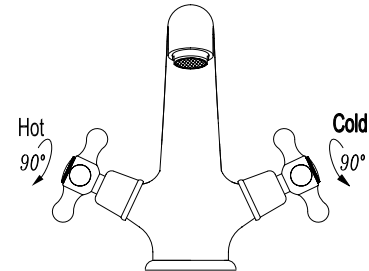


■ POP-UP INSTALLATION STEP:



■ Usage instructions

Turn the taps to start the flow of water.
The more the tap is turned the greater the flow of water.



■ FAUCET INSTALLATION STEPS:

1. Before installation, please make sure there is a hole (Ø35) on the table-board. Refer to draft (A)

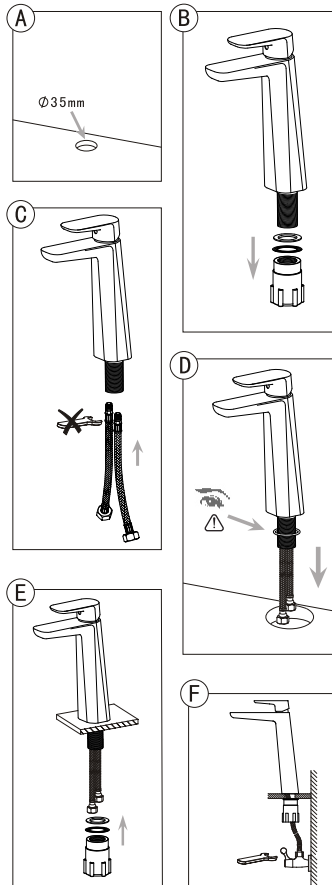
2. Remove the large plastic nut and washers from the threaded part of the tap. Refer to draft (B)

3. Screw the braided hoses into the corresponding holes for the hot and cold water feed. Refer to draft (C)

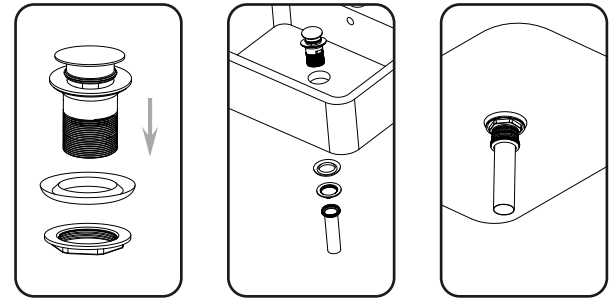
4. Place the plastic and metal washers over the braided hoses and slide up to the main tap body. Drop the hoses through the cut out and lower the tap into position. Refer to draft (D).

5. Place the plastic nut over the hoses and screw up tight. Refer to draft (E)

6. Connect the hoses to the relevant hot or cold mains feed and tighten with a wrench. Turn on the water supply and observe all joints to check for leaks. Refer to draft (F)

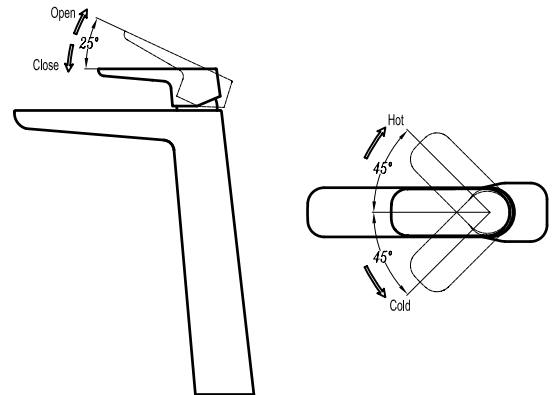


■ POP-UP INSTALLATION STEP:



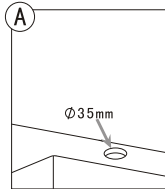
■ Usage Instructions

Lift the handle to start the water flow, the higher the handle is lifted, the greater the flow of water.
Turn the handle to the right for cold water and left for hot.

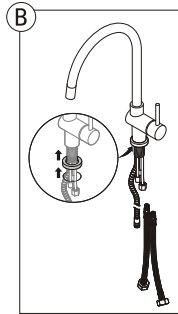


■ FAUCET INSTALLATION STEPS:

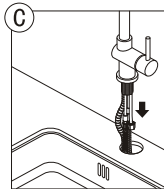
1. Before installation, please make sure there is a hole (Ø35) on the table-board. Refer to draft (A)



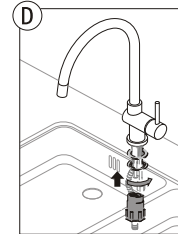
2. Remove the large plastic nut and washers from the threaded part of the tap. Refer to draft (B)



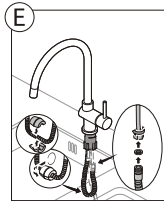
3. Screw the braided hoses into the corresponding holes for the hot and cold water feed. Loop the flexi-hose back on itself and screw it into the nut already in place. Refer to draft (C)



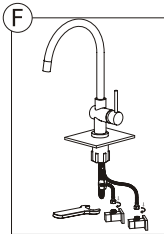
4. Place the plastic and metal washers over the braided hoses and slide up to the main tap body. Drop the hoses through the cut out and lower the tap into position. Refer to draft (D).



5. Place the plastic nut over the hoses and screw up tight. Refer to draft (E).



Unfasten the two halves of the weight and place around the flexi-hose. The weight should be placed at a point on the hose that allows it to retract the flexi-hose unaided but far enough along to allow the required length of flexi-hose to be withdrawn from the body of the tap.



6. Connect the hoses to the relevant hot or cold mains feed and tighten with a wrench. Turn on the water supply and observe all joints to check for leaks. Refer to draft (F)

■ Usage Instructions

Pull the handle to start the water flow, the further the handle is pulled, the greater the flow of water. Turn the handle to the right for cold water and left for hot. The hose can be withdrawn by pulling it away from the body of the tap. It should retract.

