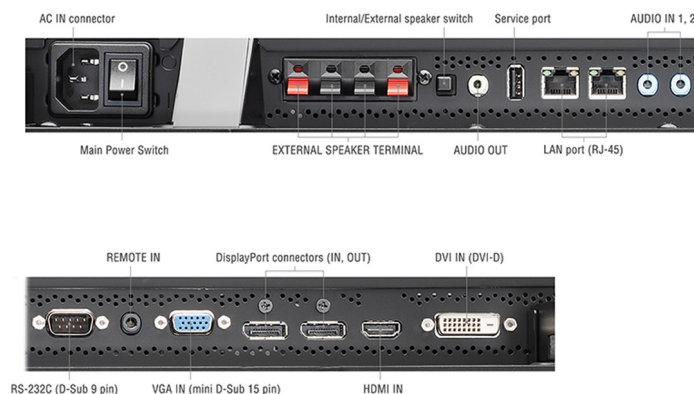
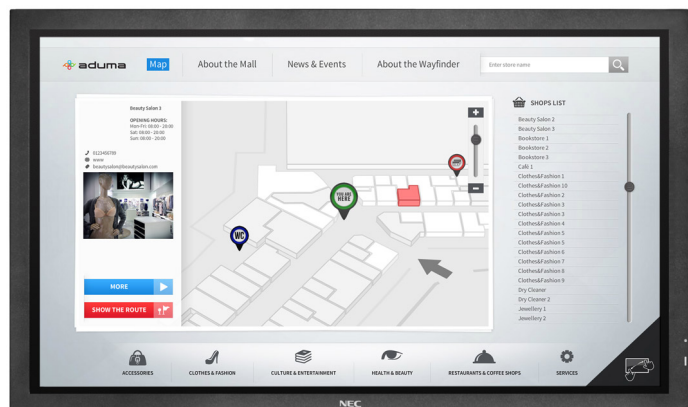


NEC MultiSync® P553 SST (Multi-Touch)

Order Code: 60003769

NEC LCD 55" Touch Large Format Display



NEC MultiSync® P553 SST is the new multi-touch product of NEC's P Series boasting 55" in size. Based on the new touch technology ShadowSense™ the display delivers true multi-touch support with up to 6 simultaneous touch points. ShadowSense™ touch is an innovative and patented optical position sensing technology. Unlike other optical technologies that utilize cameras or imaging arrays, ShadowSense™ designs use high-performance sensors to provide unprecedented performance, stability and accuracy. Thanks to anti-reflective coating, reflections are reduced to a minimum which significantly increases the readability of the content shown.

An ideal solution for any kind of 24/7 interactive retail signage, wayfinding and kiosk applications as well as for interactive whiteboard usage in meeting rooms and class rooms.

BENEFITS

Multi-Touch - true multi-touch support with up to 6 simultaneous touch points for all major operating systems.

ShadowSense™ Touch - offering real-time tracking of all touch points (6 to 8 ms response time) and sub-2 mm touch point accuracy. No ghost touches or dead zones.

Driver-free - no need to install any drivers on the host PC for all major operating systems. Interface to host PC is USB HID protocol with no drivers, calibration or application software on the host.

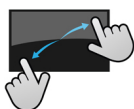
Calibration-free - due to robust and accurate design, no drift, mechanical alignment or temperature issues. No re-calibration of the touch system necessary.

Static Object Detection and Rejection - solid touch activation of any objects ≥ 4 mm in diameter. Possible usage with finger, gloved hand and stylus. Configurable hover distance for touch detection and palm rejection.

High Ambient Light Operation - enhanced filtering and analogue sensors allow operation in bright condition up to full sunlight.

Protective Glass - single anti-reflection coating for perfect visibility, premium toughened glass for security.

Future Ready with OPS Cable Free Expansion - upgrade the power of your display at any time without the need for external cables or devices.



DISPLAY	Panel Technology	S-PVA with edge LED backlights
	Screen Size [inch/cm]	55 / 138.8
	Brightness (shipping) [cd/m²]	550, (700 max)
	Contrast Ratio (typ.)	4000:1
	Viewing Angle [°]	178 horizontal / 178 vertical (typ. at contrast ratio 10:1)
	Supported Orientation	Landscape; Portrait
SYNCHRONISATION RATE	Horizontal Frequency [kHz]	31.5 - 91.1 (analog and digital)
	Vertical Frequency [Hz]	50 - 85
RESOLUTION	Native Resolution	1920 x 1080 at 60 Hz
	Supported on DisplayPort and HDMI	3840 x 2160 (24/30 Hz); 1920 x 1080; 1600 x 1200; 1360 x 768; 1280 x 1024; 1280 x 768; 1080i; 1080p; 1024 x 768; 800 x 600; 720p (50/60 Hz); 640 x 480; 576p (50 Hz); 480p (60 Hz)
	Supported on HDMI only	4096 x 2160 (24 Hz); 3840 x 2160 (25 Hz); 1360 x 768; 576i (50 Hz); 480i (60 Hz)
CONNECTIVITY	Input Video Analogue	1 x D-sub 15 pin
	Input Video Digital	1 x DisplayPort (with HDCP); 1 x DVI-D (with HDCP); 1 x HDMI (with HDCP)
	Input Audio Analogue	2 x 3,5 mm jack
	Input Audio Digital	1 x HDMI; DisplayPort
	Input Control	LAN 100Mbit; remote control wire (3,5mm jack); RS232
	Output Video Digital	1 x DisplayPort; 1 x DVI-D; 1 x HDMI; 1 x Interface Extension Slot; 1 x OPS; 1 x through DisplayPort out
	Output Audio Analogue	3,5mm jack
	Output Control	LAN 100Mbit
	Remote Control	LAN with SNMP; Remote Control IR (internal/external (optional) sensor); RS-232C (9-pin D-sub) Input
OPS OPTION SLOT	Slot Technology	Open pluggable specification (NEC / Intel OPS standard)
	Inrush Current [A]	max. 10
	Power Consumption [W]	max. 61
	Voltage / Current [V/A]	16/4
INTERFACE EXTENSION SLOT	Slot Technology	analogue and digital interface extension (NEC standard)
SENSORS	Ambient Light Sensor	Integrated, triggered actions programmable
	Temperature Sensor	Integrated, 3 sensors, triggered actions programmable
ELECTRICAL	Power Consumption on Mode [W]	168 shipping; 333 (max.)
	Power Savings Mode [W]	< 0.5 (ECO Standby); < 1
	Power Management	VESA DPMS
ENVIRONMENTAL CONDITIONS	Operating Temperature [°C]	+0 to +40
	Operating Humidity [%]	20 to 80
MECHANICAL	Dimensions (W x H x D) [mm]	Without stand: 1,328 x 789 x 79.1
	Weight [kg]	Without stand: 37
	Bezel Width [mm]	40 (left and right); 40 (top and bottom)
	VESA Mounting [mm]	300 x 300 (FDMI); 4 holes; M6
GLASS	Thickness [mm]	4
	Type	Premium toughened glass, single sided anti-reflective coating
	Light Transmission [%]	92 (+/- 2 %)
	Haze Level [%]	9 (+/- 2 %)
TOUCH	Touch Technology	ShadowSense™ Touch
	Number of Touches	Real multi-touch up to 6 touches
	Response Time [ms]	6 to 8
	Touch Active Area (W x H) [mm]	1,247.35 x 708.71
	Touch Method	Finger; Gloves; Stylus (≥ 4 mm)
	Operating System	Native Multi-Touch: Windows 7, Windows 8, Linux, Android; Default Mouse: Windows XP, Windows Vista, Mac OS X
	Data Interface	USB 2.0 (full speed) HID; USB powered, plug & play
	Accuracy [mm]	< 2
	Touch Resolution	12-bit (4096 x 4096)
ADDITIONAL FEATURES	Ambient Light Rejection	Up to full sunlight (approx. 100000 lux)
	Special Characteristics	Auto ID assignment; Auto tiling function; Automatic Alarm E-Mails; HTTP Server; Image flip; NaViSet Administrator 2; Point Zoom Function; Programmable 10-bit LUT with 3 memory banks; Sticky Note Function in OSD; User readable log function
	Colour Versions	Black Front Bezel, Black Back Cabinet
	Safety and Ergonomics	C-tick; CE; FCC Class B; PSB; RoHS; TÜV GS; UL/C-UL or CSA; VCCI
	Audio	Integrated Speakers (10 W + 10 W); Optional Speakers (15 W + 15 W)
	Shipping Content	CD-ROM (User Guides/Manuals); Display; DVI-D cable; Power Cable; Remote Control; USB cable
	Warranty	3 years warranty incl. backlight; additional services available; optional 4. + 5. year warranty extension
AVAILABLE OPTIONS	Operating Hours	24/7
	Accessories	Feet (ST-5220); Speaker (SP-TF1, SP-RM1); Trolley (PDMHA, PDMHM-L); Wall mount (PD(02)W T M L and P, PDWHM-M)
	Interface Extension	SB3-AB1 analogue: Audio; Component; Composite; S-Video SB3-AB2 analogue: Audio; RGBHV SB3-DB1 digital: 2 x HDMI
GREEN FEATURES	OPS	HD-SDI 1.5G, 3G; HDBaseT receiver; OPS Digital Signage Player; Slot-inPC (Intel® Core i5/i7 with WS7P recommended); Wireless Display Media Player
	Energy Efficiency	Ambient light sensor; Carbon savings meter; ECOMode; LED backlight
	Ecological Materials	Manuals on CD; Optional feet