

## Serie | 8, Built-in oven with added steam function, Stainless steel HRG675BS1B



**A+**



### Included accessories

2 x combination grid  
1 x universal pan

### Optional accessories

HEZ327000 : Pizza stone  
HEZ530000 : Half tray  
HEZ531010 : Baking tray, non-stick ceramic coated  
HEZ625071 : Grill tray, anthracite enamelled  
HEZ631070 : Baking tray, anthracite enamelled  
HEZ634000 : Baking and roasting grid (standard)  
HEZ636000 : Glass pan  
HEZ638170 : 1 level telescopic rail, full ext, pyro  
HEZ638370 : 3 level telescopic rails, full ext,pyro  
HEZ915003 : Glass roasting dish, 5,4 L

## The built-in oven with AutoPilot and added steam: automatically prepares your dishes so they're crispy and juicy.

- **Added Steam cooking:** keeping food crispy on the outside and juicy on the inside
- **4D HotAir:** even heat distribution for perfect results – on up to four levels simultaneously
- **TFT display control:** easy-to-use thanks to the control ring with full text and symbols.
- **Pyrolytic self-cleaning:** no cleaning effort thanks to pyrolytic cleaning programmes
- **Pyrolytic self-cleaning:** no cleaning effort thanks to pyrolytic cleaning programmes
- **Drop Down door with SoftOpen and SoftClose:** the oven door opens and closes gently and quietly
- Fast pre heating
- Dampened Hinges Softly and Quietly Guide the QuietClose® Door Shut.

### Technical Data

Color / Material Front :	Stainless steel
Construction type :	Built-in
Integrated Cleaning system :	Pyrolytic
Required niche size for installation (HxWxD) :	585-595 x 560-568 x 550
Dimensions of the product (mm) :	595 x 594 x 548
Dimensions of the packed product (HxWxD) (mm) :	670 x 680 x 670
Control Panel Material :	Stainless steel
Door Material :	Glass
Net weight (kg) :	40.562
Usable volume of cavity (l) :	71
Cooking method :	Bottom heat, Conventional heat, Defrost, Full width grill, Half width grill, Hot Air-Eco, Hot air grilling, low temperature cooking, Pizza setting, pre-heating, warming
Oven control :	electronic
Number of interior lights :	1
Approval certificates :	CE, VDE
Length of electrical supply cord (cm) :	120
EAN code :	4242005131464
Number of cavities (2010/30/EC) :	1
Energy efficiency class (2010/30/EC) :	A+
Energy consumption per cycle conventional (2010/30/EC) :	0.87
Energy consumption per cycle forced air convection (2010/30/EC) :	0.69
Energy efficiency index (2010/30/EC) :	81.2
Connection rating (W) :	3600
Current (A) :	16
Voltage (V) :	220-240
Frequency (Hz) :	50; 60
Plug type :	no plug



## **Serie | 8, Built-in oven with added steam function, Stainless steel HRG675BS1B**

**The built-in oven with AutoPilot and added steam: automatically prepares your dishes so they're crispy and juicy.**

### **Design**

- 2.5"-TFT colour and text display with direct select buttons
- Bosch control wheel
- Straight bar handle
- Drop down door, SoftClose, SoftOpen
- 5 shelf positions

### **Features**

- Electronic door lock Control panel lock Automatic safety switch off Residual heat indicator Start button Door contact switch
- Digital temperature display with proposal Actual temperature display Heating-up indicator AutoPilot
- Automatic programmes
- Electronic clock timer
- Interior halogen light, Light on/off when oven door opened/closed
- Integral cooling fan
- Water tank empty indicator

### **Cleaning**

- Pyrolytic self-cleaning function
- Full glass inner door

### **Programmes/functions**

- Oven with 13 heating methods: 4D Hotair, Hotair Gentle, conventional top and bottom heat, conventional heat Gentle, Hotair grilling, full width variable grill, half width grill, pizza function, bottom heat, low temperature cooking, defrost, plate warming, keep warm, reheating, Dough proving
- AutoPilot, 20
- Additional heating methods with steam: reheating, Dough proving
- Fast pre-heating function

### **Accessories**

- Available as an additional accessory
- 2 x combination grid, 1 x universal pan

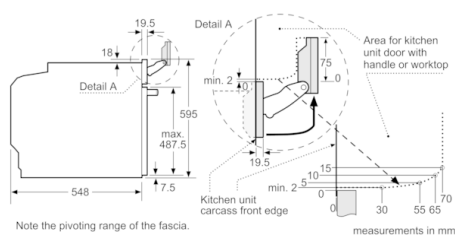
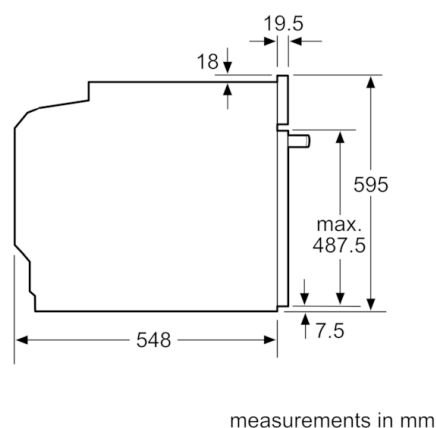
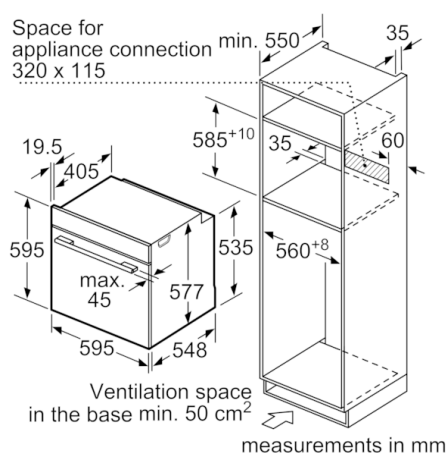
### **Performance/technical information**

- Energy efficiency rating (acc. EU Nr. 65/2014): A+ Energy consumption per cycle in conventional mode: 0.87 kWh Energy consumption per cycle in fan-forced convection

mode: 0.69 kWh Number of cavities: Main cavity Heat source: electrical Cavity volume: 71 litre capacity

- Temperature range 30 °C - 275 °C
- 120 cm Cable length
- 1 l Water tank
- Location of water tank: Outside cavity
- Total connected load electric: 3.6 KW
- Nominal voltage: 220 - 240 V
- Appliance dimension (hwxwd): 595 mm x 594 mm x 548 mm
- Niche dimension (hwxwd): 585 mm - 595 mm x 560 mm - 568 mm x 550 mm
- Please refer to the dimensions provided in the installation manual

## Serie | 8, Built-in oven with added steam function, Stainless steel HRG675BS1B



If the appliance will be installed underneath a hob, the following worktop thicknesses (including substructure if necessary) must be taken into account.

Hob type	min. worktop thickness	
	fitted	flush
Induction hob	37 mm	38 mm
Full surface Induction hob	47 mm	48 mm
Gas hob	30 mm	38 mm
Electric hob	27 mm	30 mm

