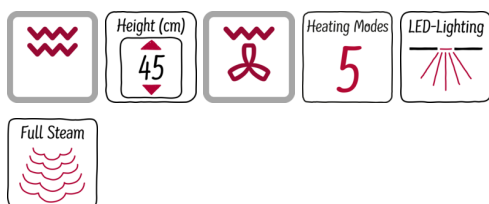


N 50
C1APG64N0B
BUILT-IN MICROWAVE WITH STEAM FUNCTION



COOKING PASSION SINCE 1877



Triple your options with our 45 cm high built-in microwave: hot air and steam function add the right kind of energy to your dishes.

- ✓ Steam function - Simply more options with our steam function.
- ✓ Automatic programmes - Your kitchen helper with just the right default settings.
- ✓ Hotair - Takes your baking to new levels thanks to our optimal heat distribution.
- ✓ Steam function - Preparing yummy dinners become a piece of cake with our Steam function.
- ✓ 1000 Watt - In case time is an issue - go ahead with the 1000 Watt power of your microwave.

Features

Technical Data

Type of micro-wave oven : MW only
 Color / Material Front : Stainless steel
 Dimensions of the product (mm) : 455 x 594 x 545
 Cavity dimensions (mm) : 236.0 x 432.0 x 350
 Length of electrical supply cord (cm) : 150
 Net weight (kg) : 35.1
 Gross weight (kg) : 39.0
 EAN code : 4242004222613
 Maximum micro-wave power (W) : 1000
 Connection rating (W) : 3100
 Current (A) : 16
 Voltage (V) : 220-240
 Frequency (Hz) : 50
 Plug type : fixed connection



4 242004 222613

N 50
C1APG64NOB
BUILT-IN MICROWAVE WITH STEAM FUNCTION

Features

Design

- LCD-Display Control (white)
- Retractable control dials, Start button, Fixed control dials, Touch control
- LCD display, red, white
- electronic timer
- Drop down door
- Bar handle
- Cavity inner surface: Glass bottom
- Ceramic glass base

Features

- Automatic safety switch off
Start button
Door contact switch
- Temperature proposal
Heating up indicator
- Intelligent microwave inverter technology: For optimised results maximum output power will be regulated to 600 W when used in longer operation for gentler cooking.
- automatic programmes: 30
- LED light
- 5 shelf positions
- Cooling fan

Cleaning

- Catalytic back panel
- Framed glass inner door

Programmes/functions

- Built-in Microwave with steam function with 5 heating methods: Hot air grilling, Full surface grill
- Additional heating methods with steam: Steaming
- Built-in Microwave with steam function with 5 heating methods: Steam 100%, Microwave
- Additional heating methods with microwave: Microwave
- Microwave may be used separately or in combination
- Max. Power: 1000 W; 5 Microwave power settings (90 W, 180 W, 360 W, 600 W, 1000 W)
- Grill and microwave power levels 90 W, 180 W, 360 W, 600 W combinable
- Additional functions:
De-scaling programme
- automatic programmes: 30
- 4 defrost and 26 cooking programmes in microwave function
- Fast preheating

Standard accessories

- 1 x insert grid, 1 x Plug-in grid, 1 x glass pan, 1 x Steam container

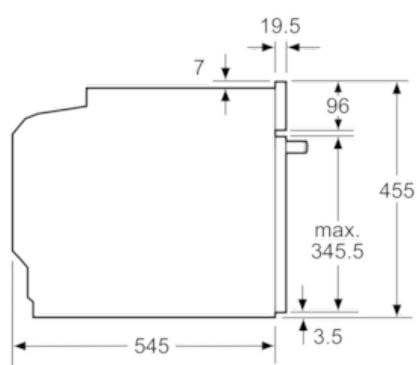
Technical information

- Cavity volume: 36 l
- Temperature range 40 °C - 230 °C
- Microwave inverter technology
- 0.8 l Water tank capacity
- Water tank empty indicator
- Location of the steam generator is outside of the cavity
- Length of mains cable: 150 cm
- Total connected load electric: 3.1 KW
- Nominal voltage: 220 - 240 V
- Appliance dimension (h x w x d): 455 mm x 594 mm x 545 mm
- Niche dimension (h x w x d): 450 mm - 452 mm x 560 mm - 568 mm x 550 mm
- Please refer to the dimensions provided in the installation manual

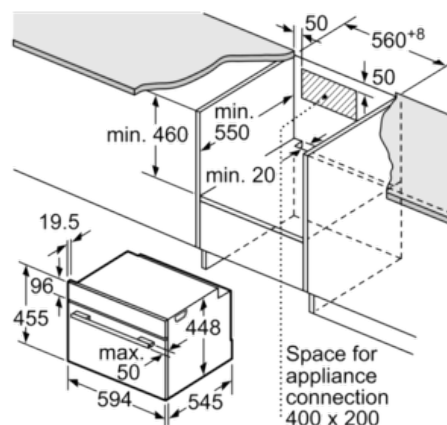
C1APG64N0B

BUILT-IN MICROWAVE WITH STEAM FUNCTION

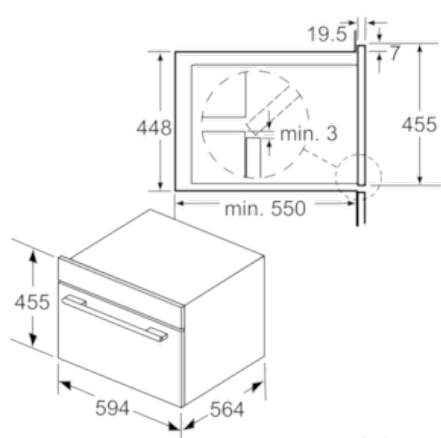
Dimensioned drawings



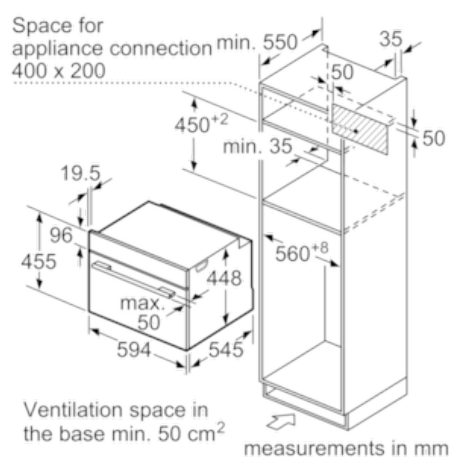
measurements in mm



measurements in mm



measurements in mm



measurements in mm