



THANK YOU FOR BUYING AN INDESIT PRODUCT.

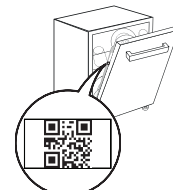
In order to receive a more complete assistance, please register your appliance on: www.indesit.com/register



Before using the appliance carefully read Safety and Installation Instructions.

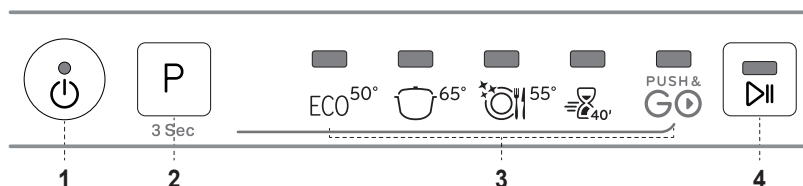
After installation, please remember to remove all transport protection parts from the dishwasher.

PLEASE SCAN THE QR CODE ON YOUR APPLIANCE IN ORDER TO HAVE MORE DETAILED INFORMATION



CONTROL PANEL

1. ON-OFF / Reset button with indicator light
2. Program selection button / Push&GO
3. Program indicator lights
4. START/Pause button with indicator light



FIRST TIME USE

More information in the **Daily Reference Guide** on website.

FILLING THE SALT RESERVOIR

The use of salt prevents the formation of LIMESCALE on the dishes and on the machine's functional components.

- It is mandatory that **THE SALT RESERVOIR NEVER BE EMPTY**.
- It is important to set the water hardness.

The salt reservoir is located in the lower part of the dishwasher (see PRODUCT DESCRIPTION) and must be filled when the green float on the cap of the salt reservoir is no longer visible.



1. Remove the lower rack and unscrew the reservoir cap (anticlockwise).
2. **Only the first time you do this: fill the salt reservoir with water.**
3. Position the funnel (see figure) and fill the salt reservoir right up to its edge (approximately 1 kg); it is not unusual for a little water to leak out.

4. Remove the funnel and wipe any salt residue away from the opening. Make sure the cap is screwed on tightly, so that no detergent can get into the container during the wash program (this could damage the water softener beyond repair).

Whenever you need to add salt, it is mandatory to complete the procedure before the beginning of the washing cycle to avoid corrosion.

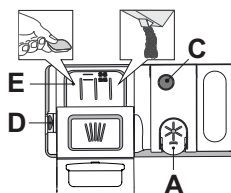
WATER SOFTENING SYSTEM

Water softener automatically reduces water hardness, consequently preventing scale buildup on heater, contributing also to better cleaning efficiency.

This system regenerates itself with salt, therefore it is required to refill salt container when empty.

Frequency of regeneration depends on water hardness level setting - regeneration takes place once per 5 Eco cycles with water hardness level set to 3. Regeneration process starts in final rinse and finishes in drying phase, before cycle ends.

- Single regeneration consumes: ~3.5L of water;
- Takes up to 5 additional minutes for the cycle;
- Consumes below 0.005kWh of energy.



FILLING THE RINSE AID DISPENSER

Rinse aid makes dish DRYING easier. The rinse aid dispenser **A** should be filled when when the dark optical indicator on the dispenser door **C** becomes transparent.

NEVER pour the rinse aid directly into the appliance tub.

FILLING THE DETERGENT DISPENSER

To open the detergent dispenser use the opening device **D**. Introduce the detergent into the dry dispenser **E** only. Place the amount of detergent for pre-washing directly inside the tub.

Usage of detergent not designed for dishwashers may cause malfunction or damage to the appliance.

PROGRAMS TABLE

Program	Programs description	Drying phase	Auto Door	Duration of wash program (h:min) ^{*)}	Water consumption (litres/cycle)	Energy consumption (kWh/cycle)
1. ECO	Eco 50° - Program is suitable to clean normally soiled tableware, that for this use, it is the most efficient programme in terms of its combined energy and water consumption, and that it is used to assess compliance with the EU Ecodesign legislation.	✓	✓	4:00	11.5	0.67
2.	Intensive 65° - Program recommended for heavily soiled crockery, especially suitable for pans and saucepans (not to be used for delicate items).	✓	✓	2:30	15.5	1.50
3.	Mixed 55° - Mixed soil. For normally soiled dishes with dried food residues.	✓	✓	2:00	15.0	1.35
4.	Rapid 40° 45° - Program to be used for half load of lightly-soiled dishes with no dried food residues. Without drying.	-	-	0:40	9.0	0.70
5.	Push&GO 50° - Everyday wash and dry cycle that ensures great cleaning performance in a short time without the need to pre-treat dishes.	✓	✓	1:25	11.5	1.10

ECO program data is measured under laboratory conditions according to European Standard EN 60436:2020.

Note for Test Laboratories:

For information on comparative EN testing conditions, please send an email to the following address: dw_test_support@europeanappliances.com

Pre-treatment of the dishes is not needed before any of the programs.

^{*)} Values given for programs other than the program Eco are indicative only. The actual time may vary depending on many factors such as temperature and pressure of the incoming water, room temperature, amount of detergent, quantity and type of load, load balancing, additional selected options and sensor calibration. The sensor calibration can increase program duration up to 20 min.

OPTIONS AND FUNCTIONS

Please scan the **QR code** on your product in order to have more detailed information.



AUTO DOOR is a convection drying system which automatically opens the door during/after drying phase to ensure exceptional drying performance every day. Door opens at the temperature that is safe to your kitchen furniture.



PUSH&GO - Push&GO button (P) is an easily distinguishable button that allows you direct access to the Push&GO program, a wash and dry cycle that ensures great cleaning performance in a short time. You don't have to worry which program to choose, Push&GO cycle will do the work for you. To select Push&GO program, switch on appliance, press only **P** button for 3 seconds (corresponding indicator lights up) and close the door within 4 seconds.

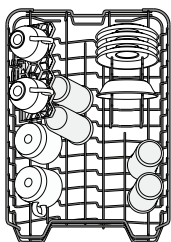
LOADING THE RACKS

CAPACITY: **10** standard place-settings

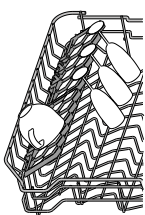
UPPER RACK

Load delicate and light dishes: glasses, cups, saucers, low salad bowls.

(loading example for the upper rack)



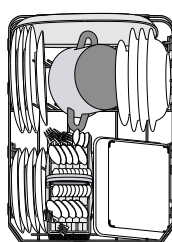
FOLDABLE FLAPS WITH ADJUSTABLE POSITION



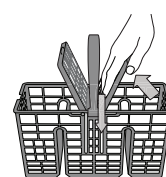
LOWER RACK

For pots, lids, plates, salad bowls, cutlery etc. Large plates and lids should ideally be placed at the sides to avoid interferences with the spray arm.

(loading example for the lower rack)



CUTLERY BASKET



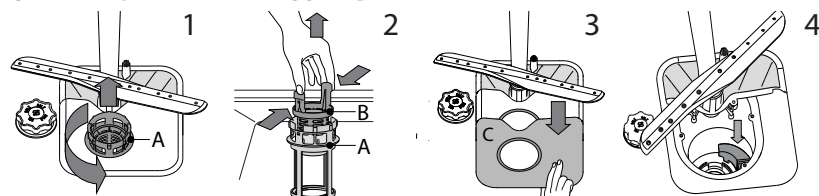
The basket is equipped with top grilles for improved cutlery arrangement. The cutlery basket should be positioned only at the front of the lower rack.

Knives and other utensils with sharp edges must be placed in the cutlery basket with the points facing downwards or they must be positioned horizontally in the tip-up compartments on the upper rack.

CARE AND MAINTENANCE

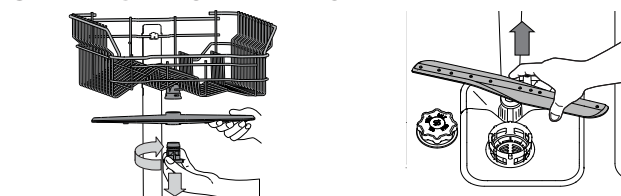
More information in the **Daily Reference Guide** on website.

CLEANING THE FILTER ASSEMBLY



In case you find foreign objects (such as broken glass, porcelain, bones, fruit seeds etc.) **please remove them carefully.** **NEVER REMOVE** the wash-cycle pump protection (black detail) (Fig 4).

CLEANING THE SPRAY ARMS



To remove the upper spray arm, turn the plastic locking ring in a clockwise direction.

The lower spray arm may be removed by pulling it upwards.

TROUBLESHOOTING

Please scan the **QR code** on your product in order to have more detailed information.

In case your dishwasher doesn't work properly, check if the problem can be solved by going through the following list. For other errors or issues please contact authorized After-sales Service which contact details can be found in the warranty booklet. Spare parts will be available for a period of either up to 7 or up to 10 years, according to the specific Regulation requirements.

PROBLEMS	POSSIBLE CAUSES	SOLUTIONS
The dishwasher does not fill the water. All LEDs are blinking rapidly	No water in the water supply or the tap is closed.	Make sure there is water in the water supply or the tap running.
	The inlet hose is bent.	Make sure the inlet hose is not bent (see <i>INSTALLATION</i>) reprogram the dishwasher and reboot.
	The sieve in the water inlet hose is clogged; it is necessary to clean it	After having carried out the verification and cleaning, turn off and turn on the dishwasher and restart a new program.
Dishwasher finishes the cycle prematurely.	Drain hose positioned too low or siphoning into home sewage system.	Check if end of drain hose is placed at correct height (see <i>INSTALLATION</i>). Check for siphoning into home sewage system, install air admittance valve if necessary.
	Air in water supply.	Check water supply for leaks or other issues letting air inside.
Detergent leaks.	Depends on the liquid detergent used and can be emphasized in case of delay option is activated.	Small leaks will not cause machine malfunction and can be avoided by changing liquid detergent type or using tablets.

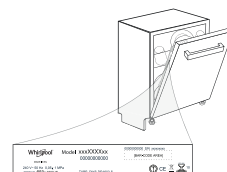
Policies, standard documentation, ordering of spare parts and additional product information can be found by:

- Using QR code on your product.
- Visiting our website docs.indesit.eu and parts-selfservice.europeanappliances.com
- Alternatively, **contact our After-sales Service** (See phone number in the warranty booklet).

When contacting our After-sales Service, please state the codes provided on your product's identification plate.

The model information can be retrieved using the QR-Code reported in the energy label.

The label also includes the model identifier that can be used to consult the portal of the registry at <https://eprel.ec.europa.eu>.



400020012377C

06/2025 dk - Xerox Fabriano

