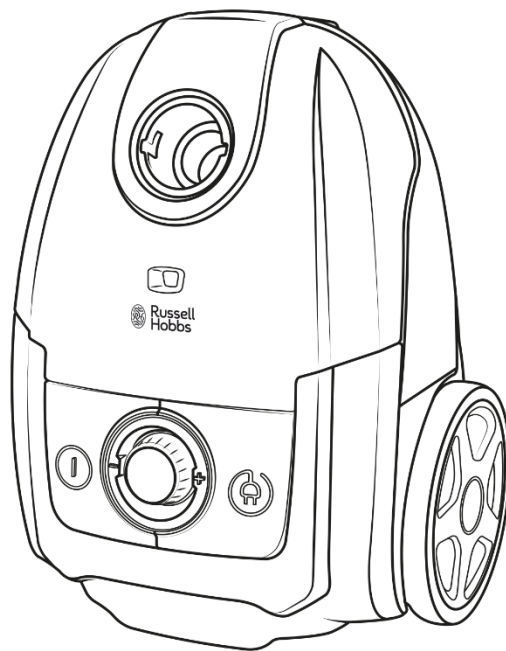




# Russell Hobbs

## Vario Max Bagged Cylinder Vacuum Cleaner



**Model Number: RHBCV2502**

**220-240V~, 50/60Hz, 700W**

For Customer Services & Spare Parts please call **0345 209 7461**  
Opening times: Monday - Friday 8am – 8pm & Saturday 9am – 1pm  
Or visit us at **[www.productcare.co.uk](http://www.productcare.co.uk)**

**PLEASE RETAIN**  
**FOR FUTURE REFERENCE**

# **CONTENTS**

	<b>Page(s)</b>
Safety instructions	<b>3-6</b>
Energy performance label	<b>7</b>
Technical data	<b>8</b>
Vacuum feature diagram	<b>9</b>
Vacuum cleaner assembly	<b>10-11</b>
Using your vacuum cleaner	<b>12-15</b>
Cleaning and care	<b>16-18</b>
Problem solving	<b>19</b>
Guarantee and customer services	<b>20</b>
Spare parts	<b>21</b>
Connection to the mains supply	<b>22</b>
Disposal information	<b>24</b>

Thank you for purchasing your Russell Hobbs Vario Max Bagged Cylinder Vacuum Cleaner.

To get the best from your new cleaner, take a few moments to read these instructions and keep them in a safe place for future reference.

Should you require any further assistance, our friendly Product Care team will be happy to help.

For Customer Services & Spare Parts please call **0345 209 7461**  
Opening times: Monday - Friday 8am – 8pm & Saturday 9am – 1pm  
Or visit us at **[www.productcare.co.uk](http://www.productcare.co.uk)**

# **SAFETY INSTRUCTIONS**

## **IMPORTANT SAFETY INSTRUCTIONS** **READ CAREFULLY AND KEEP FOR FUTURE REFERENCE**

### **WARNING:**

- It is hazardous for anyone other than a competent person to carry out any service or repair operation that involves the removal of a cover which gives protection against exposure to electrical parts.
- If the supply cord is damaged, it must be replaced by the manufacturer, its service agent or similarly qualified persons in order to avoid a hazard.
- This product is intended for household use only. Do not use outdoors.
- This appliance can be used by children aged from 8 years and above and persons with reduced physical, sensory or mental capabilities or lack of experience and knowledge if they have been given supervision or instruction concerning use of the appliance in a safe way and understand the hazards involved. Children shall not play with the appliance. Cleaning and user maintenance shall not be made by children without supervision.
- Do not operate this appliance for anything other than its intended use. This product is intended for household use only. Do not use outdoors.
- Do not immerse in water or other liquids for cleaning.

# **SAFETY INSTRUCTIONS**

## **IMPORTANT SAFETY INSTRUCTIONS** **READ CAREFULLY AND KEEP FOR FUTURE REFERENCE**

- Do not direct at people, animals, electrical outlets, or equipment containing electrical components.
- Unplug from outlet when not in use. Do not leave the cleaner unattended while plugged in.
- Do not use with damaged cord or plug.
- Do not use vacuum cleaner if it has been dropped, damaged, left outdoors or dropped into water.
- Keep the vacuum cleaner away from water; do not allow it to get wet. If unit is wet, do not plug unit into wall socket or turn unit on.
- Do not handle the vacuum cleaner with wet hands.
- Do not pull or carry by cord, use cord as a handle, close door on cord, pull cord around sharp corners or edges, or expose cord to heated surfaces.
- Do not unplug by pulling on cord.
- To protect against electrical shock do not immerse cord, plug, or appliance in water or other liquid.
- Unplug from the mains outlet when not in use, before putting on and taking off parts, and before cleaning.
- The use of accessory attachments not recommended by the appliance manufacturer may cause fire, electric shock or injury. Only use the accessories supplied by the manufacturer.

# **SAFETY INSTRUCTIONS**

## **IMPORTANT SAFETY INSTRUCTIONS** **READ CAREFULLY AND KEEP FOR FUTURE REFERENCE**

### **WARNING:**

- Do not let the cord hang over the edge of the worktop, or touch hot surfaces.
- Do not use this vacuum to pick up water or any other liquids, combustible substances or hot/burning objects.
- Only use the unit when fully assembled.
- Never place your fingers or other objects into any part of the cleaner. Be aware that loose clothing or hair may become trapped in the cleaner if improperly used.
- Before use, ensure that all of the air vents of the cleaner are clear and there is no restriction of air flow.
- When cleaning stairs, ensure the cleaner is on a step below you. NEVER place the cleaner above.
- Caution: Exhaust air discharged from the rear of the cleaner may extinguish a gas fire, pilot light, or disturb ashes in an open fire. Always avoid directing the cleaner toward naked flames.

# **SAFETY INSTRUCTIONS**

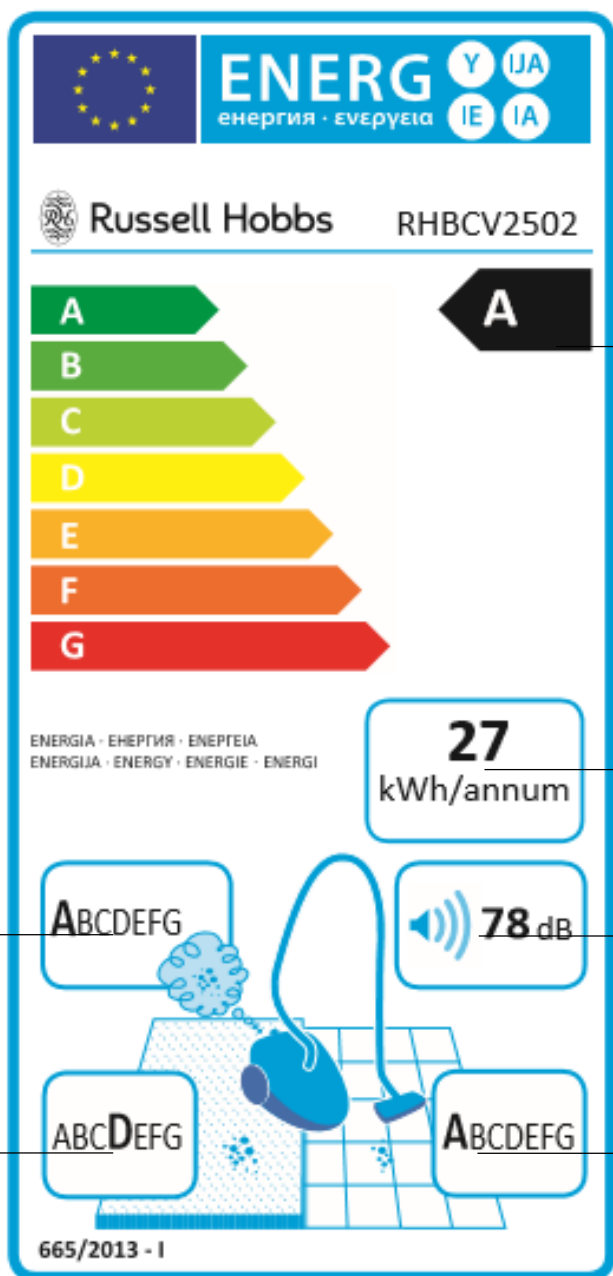
## **IMPORTANT SAFETY INSTRUCTIONS** **READ CAREFULLY AND KEEP FOR FUTURE REFERENCE**

- **Important:** This cleaner has a thermal safety device which automatically cuts off the power supply in case of over heating. If the safety device has switched the cleaner off, unplug from the mains, allow the cleaner to cool down and check for any blockages. Once the cleaner has cooled it can be plugged back in to the mains and used as normal.

For Customer Services & Spare Parts please call **0345 209 7461**  
Opening times: Monday - Friday 8am – 8pm & Saturday 9am – 1pm  
Or visit us at **[www.productcare.co.uk](http://www.productcare.co.uk)**

# ENERGY PERFORMANCE LABEL

The purpose of the energy label is to help you understand a vacuum cleaner's energy efficiency performance.



**1. Energy rating** – based primarily on energy consumption and pick-up.

**2. Annual energy usage** – the amount of energy used over a year.

**3. Emissions** – the amount of dust in the air emitted from the machine's exhaust.

**4. Noise** – the noise level produced by the machine, measured in decibels.

**5. Pick up (carpets)** – the rating of how much dust the machine picks up from carpets.

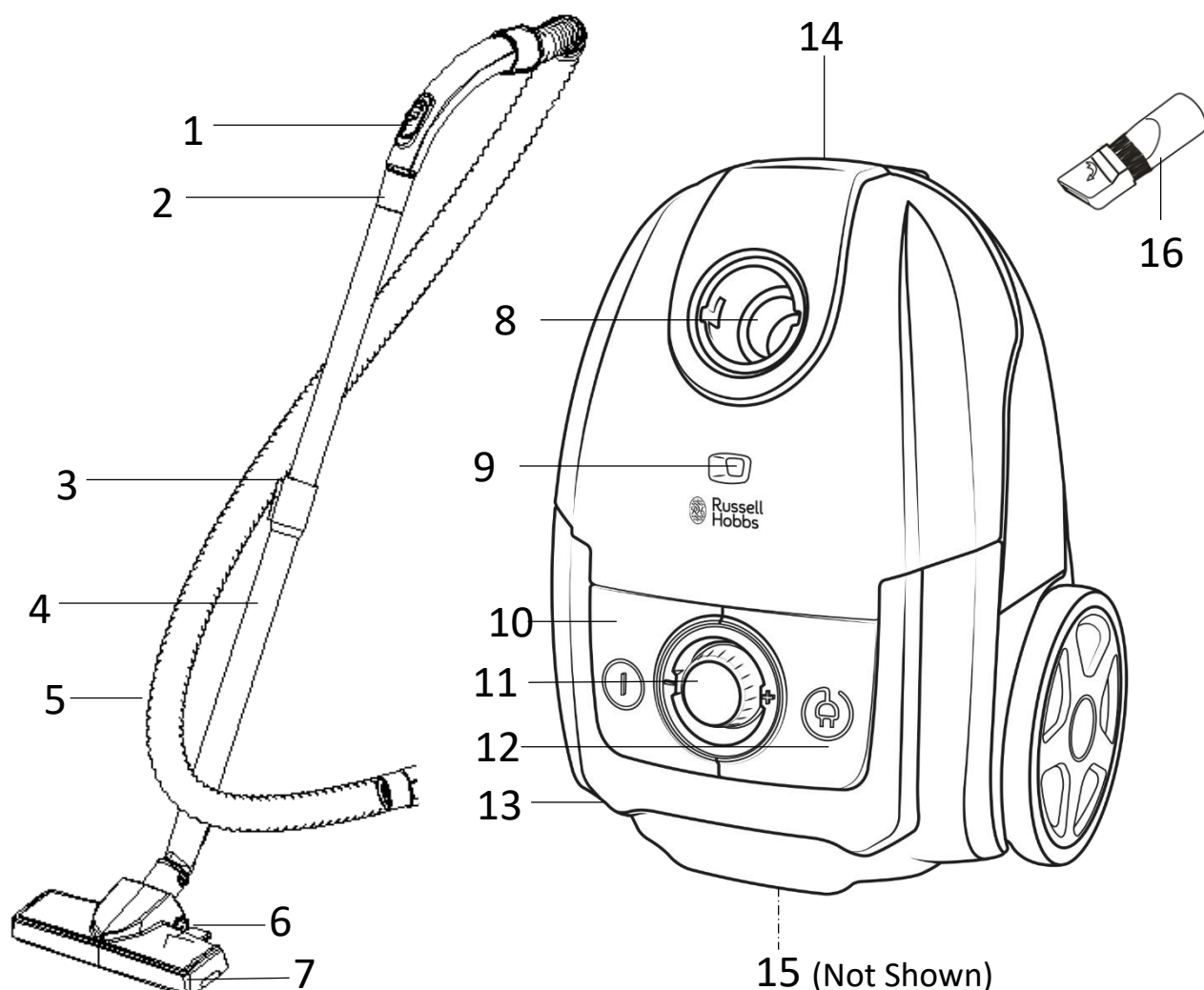
**6. Pick-up (hard floors/crevices)** – the rating of how much dust the machine picks up from hard floors and crevices.

# TECHNICAL DATA (PRODUCT FISCHE)

Trade mark	Russell Hobbs
Model	RHBCV2502
Energy efficiency class	A
Annual energy consumption (kWh/year)	27
Carpet cleaning performance class	D
Hard floor cleaning performance class	A
Dust re-emission class	A
Sound power level	78db
Rated input power	700



# VACUUM FEATURE DIAGRAM



1	Hose suction control	7	Floor head	13	Carry handle
2	Hose connector	8	Hose entry point	14	Top cover release latch
3	Extension lock	9	Bag full indicator	15	HEPA Filter Cover
4	Extension tube	10	Power button	16	2 in 1 Crevice/brush
5	Hose	11	Variable power dial		
6	Floor surface selector	12	Cord rewind button		

For Customer Services & Spare Parts please call **0345 209 7461**  
 Opening times: Monday - Friday 8am – 8pm & Saturday 9am – 1pm  
 Or visit us at **[www.productcare.co.uk](http://www.productcare.co.uk)**

# **VACUUM CLEANER ASSEMBLY**

## **Before using your vacuum cleaner**

Remove all packaging and lay out the separate components.

Check the unit after unpacking for any visual damage such as:

- Misaligned or damaged parts
- Damage to the main body and separate components
- Damage to the plug or cable.

If you can see any damage do not use the vacuum cleaner and contact customer services.

For Customer Services & Spare Parts please call **0345 209 7461**  
Opening times: Monday - Friday 8am – 8pm & Saturday 9am – 1pm  
Or visit us at **[www.productcare.co.uk](http://www.productcare.co.uk)**

# VACUUM CLEANER ASSEMBLY

**Ensure the unit is unplugged before assembling.**

**1.** Ensure there is a dust bag correctly inserted in the vacuum cleaner.

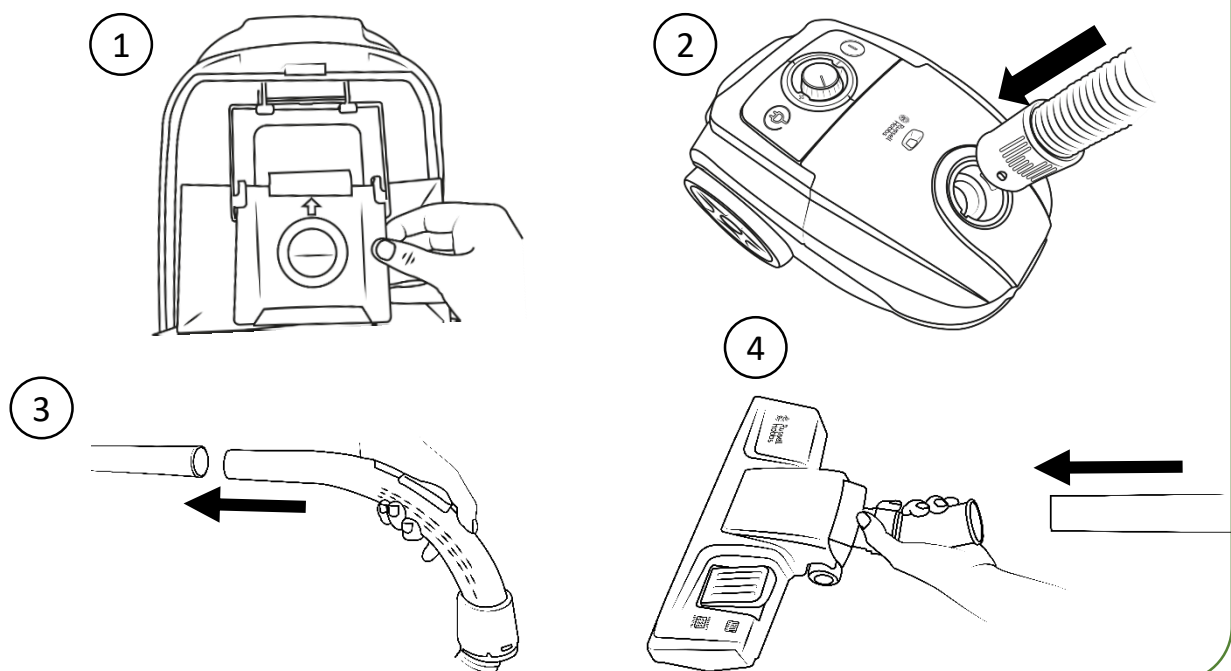
With the vacuum cleaner stood upright, release the top cover by pulling the latch towards you.

The cardboard collar of the dust bag should slide into the dust bag holder with the arrow facing upwards.

**2.** Insert the ribbed end of the hose into the hose inlet, aligning the shoulders on the end of the hose with the inserts in the hose inlet. Twist the hose in a clockwise direction to secure.

**3.** Insert the opposite end of the hose into the extension tube and push together.

**4.** Insert the other end of the extension tube into the floor head and rotate if necessary.

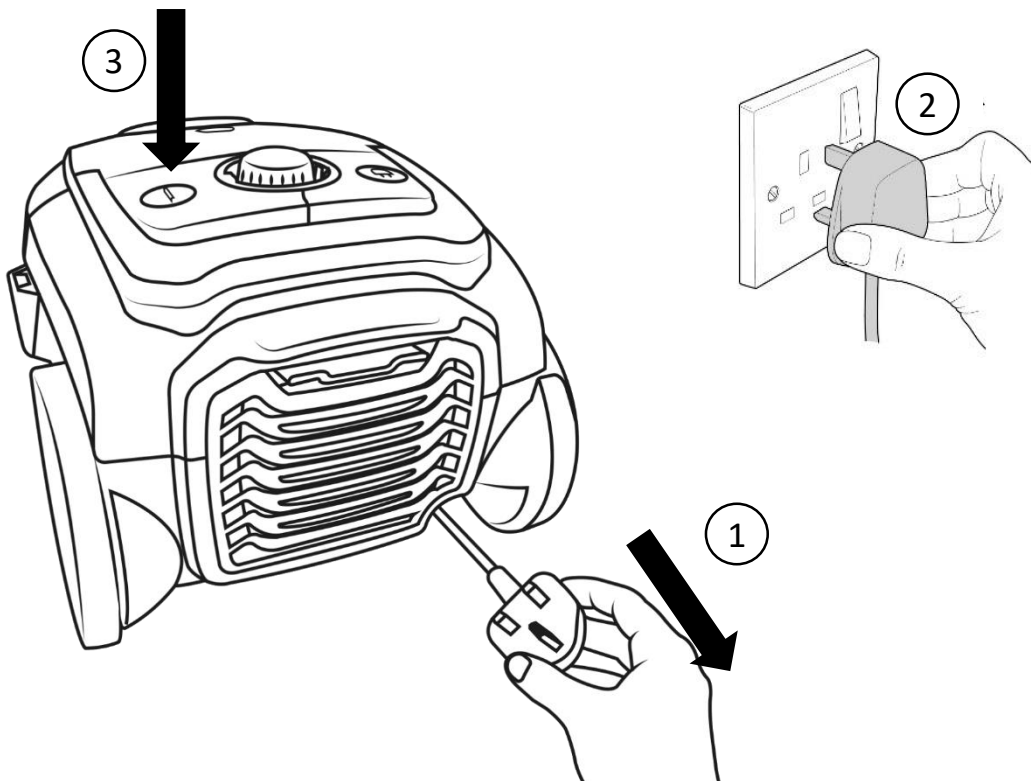


# USING YOUR VACUUM CLEANER

Once assembled:

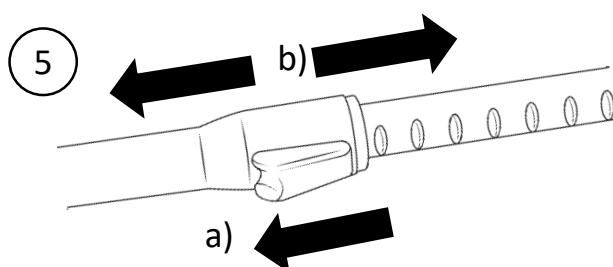
1. The cord is stored inside the unit. Pull the power cord out of the machine to as long as you require and stop when you see the yellow tab. Do not over-extend. If the red tab is visible, then wind the cord back until only the yellow tab is visible.
2. Plug the cable into a wall socket and press the switch on.
3. Press the power button to start vacuuming.
4. Move the vacuum cleaner floor head in a forwards and backwards motion over the areas you would like to clean.

**Note:** Large items can get trapped in the brush/floor head which could cause the unit to overheat. Make sure you pick up larger items that could get trapped before vacuuming.

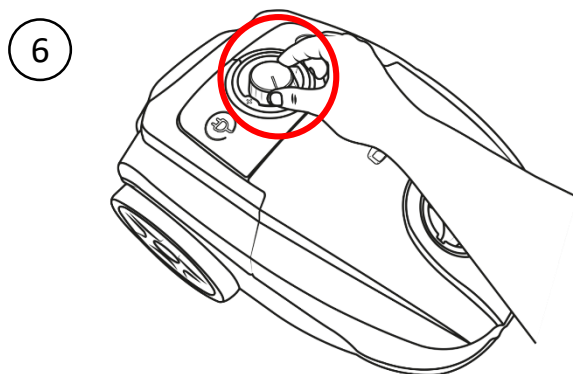


# USING YOUR VACUUM CLEANER

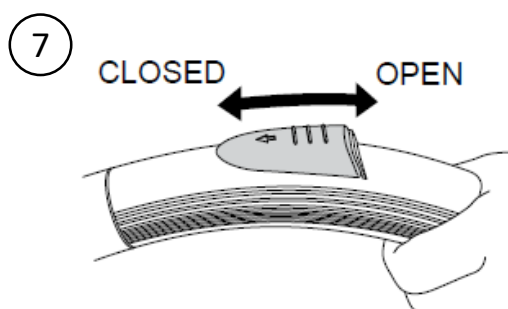
- 5.** You can adjust the extension tube length to a comfortable cleaning height. To alter the length of the telescopic handle,
- a) Push and hold the extension lock in the direction indicated.
  - b) Slide the tube, up or down, to the correct length.



- 6.** The suction of the vacuum cleaner can be adjusted by rotating the power dial on the front of the unit. You may want to use reduced power when cleaning furniture, upholstery or long pile rugs.

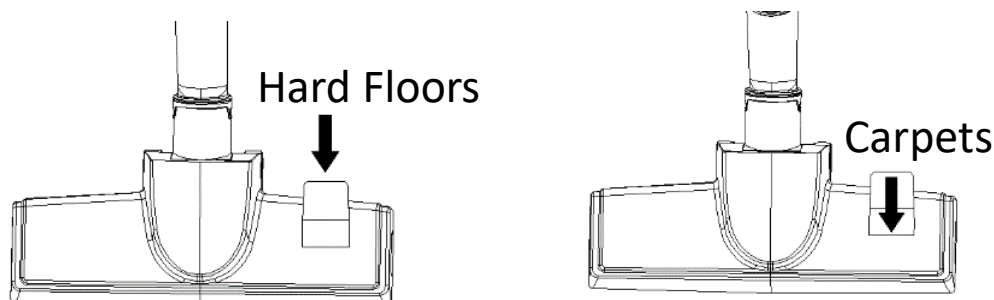


- 7.** You can also adjust the suction using the tab on the hose handle. To use less suction power, move the suction control tab to the open position in the direction indicated. For maximum suction power, close the tab.



# USING YOUR VACUUM CLEANER

8. When using the floor head you can adapt the brush depending on floor type. Please refer to the diagram below:



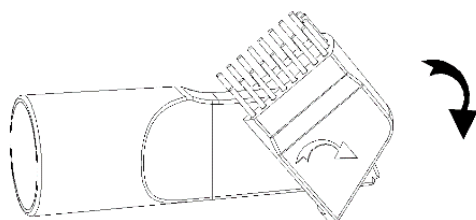
## **Tool Selection**

**This vacuum cleaner is supplied with a 2 in 1 crevice and brush tool designed for different cleaning tasks:**

The tool attaches to either the extension tube or the hose in the same manner as the floor head.

- The crevice tool is designed for narrow gaps and hard to reach places
- The brush tool can be used on delicate surfaces or for dusting.

To adapt the tool for use as a brush on delicate surfaces, rotate the head of the tool in the direction indicated below:

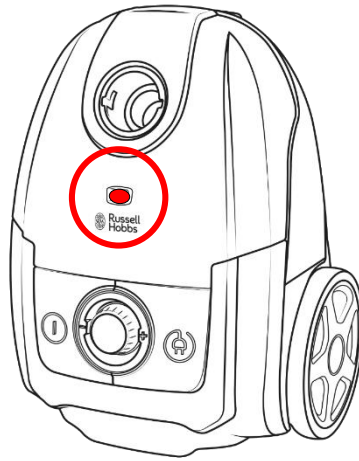


# USING YOUR VACUUM CLEANER

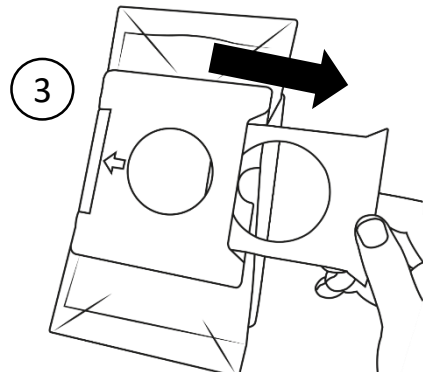
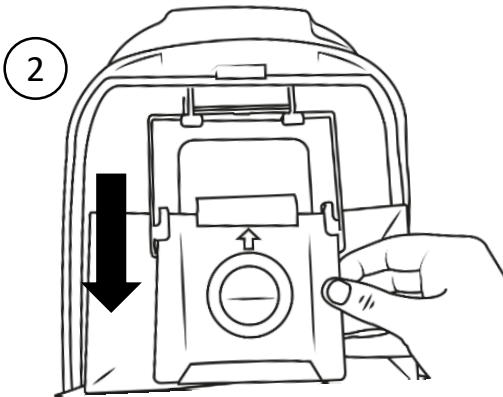
## Changing the dust bag

To maintain peak performance, we recommend replacing the dust bag when it reaches no more than  $\frac{3}{4}$  full.

There is a “bag full indicator” which will turn red when the dust bag is full:



1. With the vacuum cleaner stood upright, release the top cover by pulling the latch towards you.
2. Slide the dust bag collar downward to remove the dust bag.
3. Pull the cardboard tab to seal the dust bag.



Replace with a new dust bag by sliding the cardboard collar into the dust bag holder with the arrow facing upwards.

# **CLEANING AND CARE:**

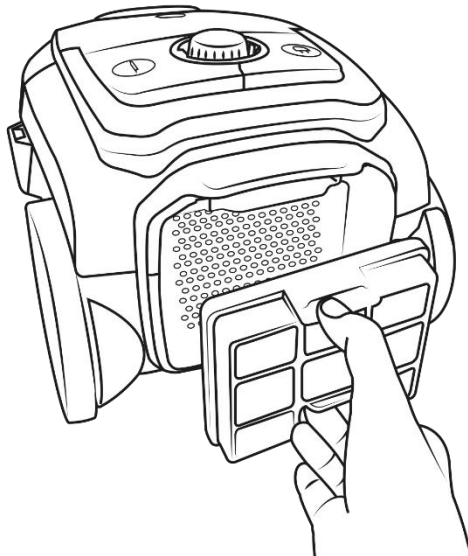
## **CLEANING THE EXHAUST FILTER**

Before you clean the appliance, disconnect the mains plug from the wall socket.

- 1.** Remove the filter cover on the back of the unit.



- 2.** Pull out the HEPA filter and tap over a bin to remove any excess dust. Wash in warm water and allow to dry for 24 hours.



- 3.** Once dried, put the filter back in place and refit the filter cover on the back of the unit.



# **CLEANING AND CARE:**

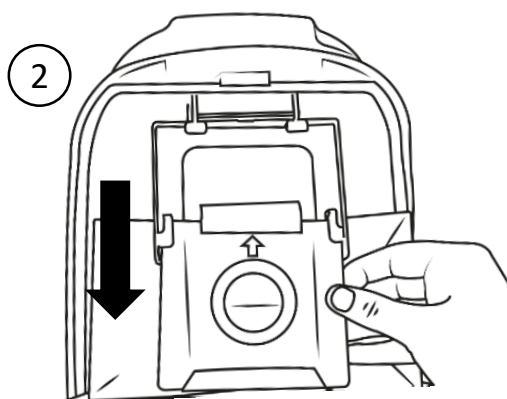
## **CLEANING THE INTERNAL FILTER**

Before you clean the appliance, disconnect the mains plug from the wall socket.

**1.** With the vacuum cleaner stood upright, release the top cover by pulling the latch towards you. The

The internal filter will be easier to access if you remove the dust bag.

**2.** Slide the dust bag collar downward to remove the dust bag.



**3.** The internal filter is located below the black filter cover. Slide the filter cover towards you to remove.

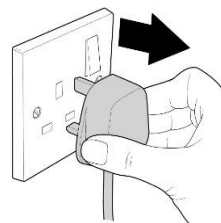
**4.** Remove the internal filter and tap over a bin to remove any excess dust. Wash in warm water and allow to dry for 24 hours.

**5.** Once dried, put the filter back in place and slide the filter cover back into place.

**6.** Replace the dust bag.

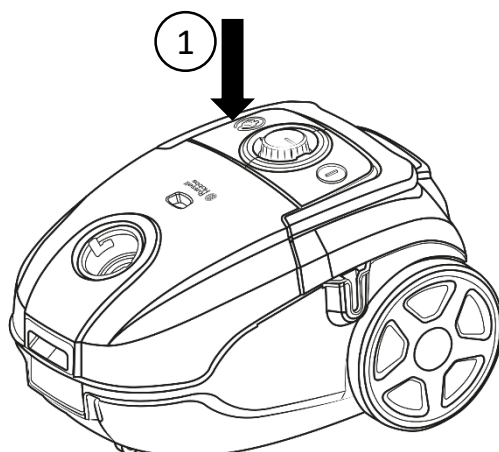
# CLEANING AND CARE

Before you clean the appliance, disconnect the mains plug from the wall socket.



## **Disassembly**

1. Press the cord rewind button to automatically bring the cord back inside the unit for storage.
2. To remove the extension tube, pull it away from the hose.
3. To remove the floor head/accessory, pull the extension tube/hose away from the head/accessory – you may need to ease it off.
4. To remove the hose from the vacuum cleaner unit, twist in an anti-clockwise direction and remove.



To clean the exterior of the device, use a damp, soft cloth and mild detergent.

## **NEVER IMMERSE THE VACUUM IN WATER.**

Wash non-electrical removable accessories in warm soapy water and allow to dry thoroughly before next use.

If the vacuum is damaged, contact the customer service helpline using the details at the bottom of this page.

## **Storage**

Store in a clean and dry environment.

For Customer Services & Spare Parts please call **0345 209 7461**  
Opening times: Monday - Friday 8am – 8pm & Saturday 9am – 1pm  
Or visit us at **[www.productcare.co.uk](http://www.productcare.co.uk)**

# PROBLEM SOLVING

<b><u>PROBLEM</u></b>	<b><u>POSSIBLE PROBLEM</u></b>	<b><u>POSSIBLE SOLUTION</u></b>
<b><i>The vacuum cleaner is plugged in but does not work</i></b>	Power cord/plug damage	Check the power cord and plug for signs of damage.
	Fuse is damaged	Check and replace the fuse in the plug.
<b><i>The suction is decreasing and the vacuum is not picking up dirt</i></b>	Dust bag	Suction may decrease if the dust bag is more than ¾ full. If so, replace with a new bag
	Filters are dirty	Clean the filters.
	Hose/head blockages	Check that there are no blockages in the hose or cleaning head.
<b><i>Vacuum cleaner is over heating</i></b>	Filters are dirty or dust bag is full	Check that the filters are not blocked and that the dust bag is not full., if so, clean/replace them following the instructions in this booklet.
<b><i>Automatic power cord rewind does not fully rewind the power cord</i></b>		Pull the power cord fully out and press the rewind button again.
<b><i>The air coming out of the vacuum cleaner smells</i></b>	Filter is dirty or dust bag is full	Clean the filter and check the dust bag is not full. Also clean the hose and dust container
	Filters are not dry	Ensure the filters have been left to dry for 24 hours before refitting back into the vacuum cleaner and using.

**We're here should you need us.**

For Customer Services & Spare Parts please call 0345 209 7461  
 Opening times: Monday - Friday 8am – 8pm & Saturday 9am – 1pm  
 Or visit us at [www.productcare.co.uk](http://www.productcare.co.uk)

# **GUARANTEE AND CUSTOMER SERVICES**

At Russell Hobbs, we take all our customer feedback seriously.

**Feel free to contact our Product Care Team, on 0345 209 7461**

**Monday – Friday: 8am-8pm & Saturday: 9am – 1pm,  
who will be more than happy to assist you.**

This product is guaranteed for **12 months** from the date of the original purchase. If any defect arises due to faulty materials or workmanship, the faulty product must be returned to the place of purchase.

Refund or replacement is at the discretion of the retailer.

## **The following conditions apply:**

- The product must be returned to the retailer with the original proof of purchase.
- The product must be installed and used in accordance with the instructions contained in this instruction guide and any other instructions for use which are supplied.
- It must be used for domestic purposes only and for its intended use.
- This warranty does not cover wear and tear, damage, misuse or consumable parts.

**This does not affect your statutory rights.**

For Customer Services & Spare Parts please call **0345 209 7461**  
Opening times: Monday - Friday 8am – 8pm & Saturday 9am – 1pm  
Or visit us at **[www.productcare.co.uk](http://www.productcare.co.uk)**

# SPARE PARTS

To check the availability of the following spare parts, simply contact our friendly Customer Services team using the details provided at the bottom of this page.

Dust Bags (Model No. VACBAGS5)

HEPA Exhaust Filter

Hose

Floor Head

Extension Tube

2 in 1 Crevice / Brush Tool

For Customer Services & Spare Parts please call **0345 209 7461**  
Opening times: Monday - Friday 8am – 8pm & Saturday 9am – 1pm  
Or visit us at **[www.productcare.co.uk](http://www.productcare.co.uk)**

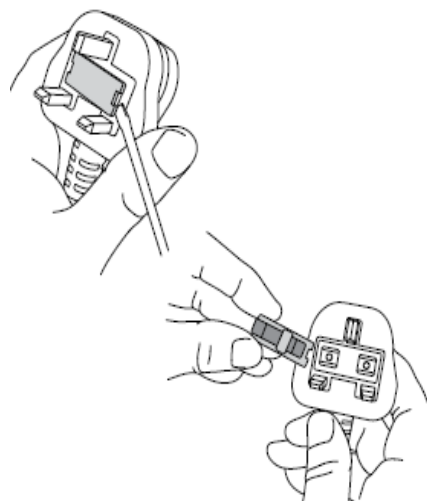
# CONNECTION TO THE MAINS SUPPLY

This appliance is designed to operate from a mains supply of  
220-240V~ 50/60Hz.

Check that the voltage marked on the product corresponds  
with your supply voltage.

## How to change the fuse

1. Slot the end of a screwdriver into the recess in the fuse holder of the plug.
2. Pull the fuse holder upwards until free of the plug and slide the fuse out.
3. Replace the fuse and replace fuse holder, pushing down until locked into place.



**Important:** Only ever use 13 amp fuses.

For Customer Services & Spare Parts please call **0345 209 7461**  
Opening times: Monday - Friday 8am – 8pm & Saturday 9am – 1pm  
Or visit us at **[www.productcare.co.uk](http://www.productcare.co.uk)**

# NOTES



# Russell Hobbs

For Customer Services & Spare  
Parts please call

**0345 209 7461**

Opening times: Monday - Friday  
8am – 8pm & Saturday 9am – 1pm

Or visit us at

**[www.productcare.co.uk](http://www.productcare.co.uk)**

Revision 1.2

Model: **RHBCV2502**

Produced for

G2S Ltd, Wigan, WN2 4AY



This symbol is known as the 'Crossed-out wheellie bin Symbol'. When this symbol is marked on a product/batteries, it means that the product/batteries should not be disposed of with your general household waste. Only discard electrical/electronic/battery items in separate collection schemes, which cater for the recovery and recycling of materials contained within. Your co-operation is vital to ensure the success of these schemes and for the protection of the environment. For your nearest disposal facility, visit [www.recycle-more.co.uk](http://www.recycle-more.co.uk) or ask in store for details.

We reserve the right, due to possible changes to design, to alter the instruction manual without prior notice.

