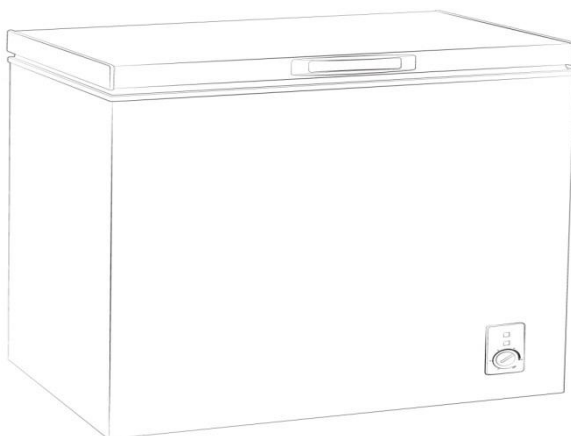




# Russell Hobbs

## Chest Freezer Instruction Manual



**Model number:**  
**RHCF200**

For Customer Services & Spare Parts please call **0345 208 8750**  
Opening times: Monday - Friday 8am – 6pm & Saturday 9am – 1pm  
or visit us at [www.productcareuk.com](http://www.productcareuk.com)

**IMPORTANT:**  
**RETAIN FOR FUTURE REFERENCE**



# Contents

<b>Safety Instructions</b>	<b>3-4</b>
<b>Electrical Safety</b>	<b>4</b>
<b>Before switching on</b>	<b>5</b>
<b>Unit &amp; Spare Parts</b>	<b>5</b>
<b>Transportation &amp; Handling</b>	<b>6</b>
<b>Positioning</b>	<b>6</b>
<b>Installation</b>	<b>7</b>
<b>How to use</b>	<b>8</b>
<b>Temperature selection</b>	<b>8</b>
<b>Power Failure</b>	<b>9</b>
<b>Storage Advice</b>	<b>9</b>
<b>Defrosting</b>	<b>10</b>
<b>Internal Cleaning</b>	<b>11</b>
<b>External Cleaning</b>	<b>11</b>
<b>When not in Use</b>	<b>11</b>
<b>Trouble shooting</b>	<b>12-13</b>
<b>Important notes</b>	<b>14</b>
<b>Connection to the mains</b>	<b>15</b>



**Russell Hobbs**

For Customer Services & Spare Parts please call **0345 208 8750**

Opening times: Monday - Friday 8am – 6pm & Saturday 9am – 1pm

or visit us at [www.productcareuk.com](http://www.productcareuk.com)



# Safety Instructions

## Important note:

Please read this booklet before installing and switching on this appliance. The manufacturer assumes no responsibility for incorrect installation and usage as described in this booklet.

**This appliance can be used by children aged from 8 years and above and persons with reduced physical, sensory or mental capabilities or lack of experience and knowledge if they have been given supervision or instruction concerning use of the appliance in a safe way and understand the hazards involved. Children shall not play with the appliance.**

- Children should be supervised to ensure that they do not play with the appliance.
- If the supply lead is damaged it must be replaced by a qualified person using the correct lead, available from **0345 208 8750**.
- Do not store chemicals or liquids such as methanol or petrol etc., which are easy to evaporate, burn or explode.
- Do not store heavy objects on top of the appliance and do not allow the refrigerator to become wet.
- The circuitry for the appliance should be isolated. The unit should always be plugged into its own plug socket and never into an extension lead.
- The voltage of this products should be 220-240V,50Hz
- Only ever remove the plug from the socket by gripping the plug firmly – do not pull the wire to remove the plug.
- Do not use electrical appliances in the freezer appliance.

Do not use mechanical devices or other artificial means to accelerate the defrosting process.

**Caution: Risk of fire** – do not store flammable liquid or other flammable material in this appliance.



**Russell Hobbs**

For Customer Services & Spare Parts please call **0345 208 8750**  
Opening times: Monday - Friday 8am – 6pm & Saturday 9am – 1pm  
or visit us at [www.productcareuk.com](http://www.productcareuk.com)



# Safety Instructions

- If this appliance is to replace an old refrigerator with a lock; break or remove the lock as a safety measure before storing it, to protect children from locking themselves inside.
- Old refrigerators and freezers contain insulation gases and refrigerant, which must be disposed of properly. Entrust the disposal of a scrap unit categorically to the competence of your local waste disposal service and contact your local authority or your dealer if you have any questions.
- Please ensure that the gas pipe at the rear of your appliance does not get damaged prior to being picked-up by the relevant waste disposal service.
- This model contains R600a refrigerant (the coolant isobutane), a natural gas that is very environmentally friendly but also combustible. When transporting and installing the unit care must be taken to ensure that none of the refrigeration circuit components become damaged. In the event of damage avoid any naked flames or any sources of ignition and ventilate the room in which the unit is placed for a few minutes.

**Warning:** *Keep the ventilation openings in the appliance enclosure, clear of obstruction.*

## Electrical Safety

### **THIS APPLIANCE MUST BE PLUGGED INTO AN EARTHED SOCKET**

Before switching on, make sure that the voltage of your electricity supply is the same as that indicated on the rating plate. This product is designed to operate on 220 – 240V AC; 50Hz, 120 W, 1A. Connection to any other power source may damage the unit.

This product may be fitted with a non re-wireable plug. If it is necessary to change the fuse in the plug, the fuse cover must be refitted. If the fuse cover becomes lost or damaged, the plug must not be used until a suitable replacement is obtained.

If the plug has to be changed because it is not suitable for your socket, or becomes damaged in any way, it should be cut off and an appropriate plug fitted following the wiring instructions below. This should be carried out by a qualified electrician. The plug removed must be disposed of safely, as insertion into a 13 Amp socket is likely to cause an electrical hazard.



**Russell Hobbs**

For Customer Services & Spare Parts please call **0345 208 8750**  
Opening times: Monday - Friday 8am – 6pm & Saturday 9am – 1pm  
or visit us at [www.productcareuk.com](http://www.productcareuk.com)



# Important Information

## Before Switching On

- Wait 3 hours before plugging in the appliance in to the mains supply to ensure optimum performance, this allows the refrigerant to settle.
- There may be an odour when you first switch on the appliance, it will disappear when the appliance starts to cool.
- To save energy, you should minimize the frequency and duration of door opening.

## Unit Parts

Before installation, check that all parts listed below are present. If any parts are missing, please contact the product care service team on **0345 2088750**.

## Unit & Spare Parts

**For the following spares please contact the customer service team on**

**0345 208 8750 or visit [productcareuk.com](http://productcareuk.com)**

Item	Quantity
Basket/shelf	1
Ice Scraper	1
Instruction Booklet	1



**Russell Hobbs**

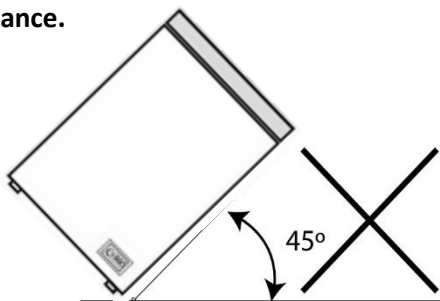
For Customer Services & Spare Parts please call **0345 208 8750**  
Opening times: Monday - Friday 8am – 6pm & Saturday 9am – 1pm  
or visit us at [www.productcareuk.com](http://www.productcareuk.com)



# Transportation and Handling

For safe lifting, tilt the appliance backwards by no more than 45 degrees, hold the base and rear corners of cabinet. Lift the freezer carefully. Never use the door handles for lifting. To move the appliance on a flat level surface, tilt it slightly backwards onto the two rear rollers and push backwards.

**This unit is heavy and could cause injury – ensure there is sufficient person power to move the appliance.**



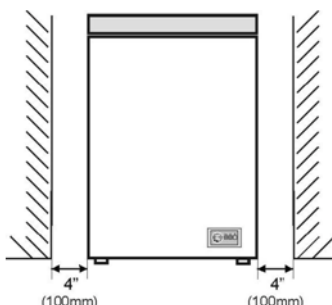
## Positioning

This appliance should only be placed on a flat, firm surface.

Choose a dry and well-ventilated space. No less than 10cm must be left around the sides and at the back, to allow efficient cooling.

Choose a location away from a heat source, such as direct sunlight, a radiator or oven.

The appliance should be positioned so that the plug is easily accessible.



**Russell Hobbs**

For Customer Services & Spare Parts please call **0345 208 8750**

Opening times: Monday - Friday 8am – 6pm & Saturday 9am – 1pm

or visit us at [www.productcareuk.com](http://www.productcareuk.com)



# Installation

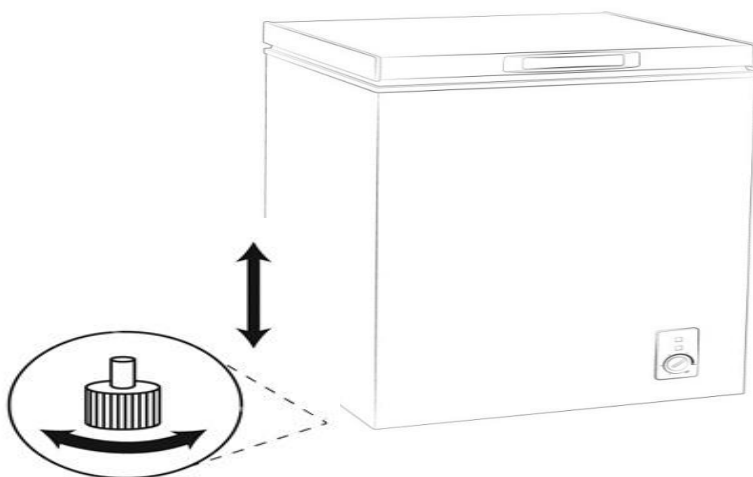
After installation, do not switch the power to the freezer on for at least 3 hours – the unit needs to stand. The unit should be kept away from direct sunlight. If the appliance is located on carpet, damage may be caused to the carpet due to heat being emitted from the unit.

Remove all transport tapes and foam protection pieces . Clean the interior of the freezer with a cloth dampened in lukewarm soap and water. Wipe with clear water and wipe dry.

When the appliance has been positioned, adjust the two front feet to ensure the unit is stable. This is essential to ensure quiet running and proper door opening /closing. See below.

Once the appliance has been standing for 3 hours, plug in the freezer, locate the thermostat knob inside the compartment and set to "3" position and switch on the power. The compressor will begin to work. Close the door.

This Appliance is suitable to be placed in garages.



**Russell Hobbs**

For Customer Services & Spare Parts please call **0345 208 8750**  
Opening times: Monday - Friday 8am – 6pm & Saturday 9am – 1pm  
or visit us at [www.productcareuk.com](http://www.productcareuk.com)



# How To Use and Temperature Selection

**!** Allow to stand for a minimum of 3 hours before plugging in to the mains

The temperature in the appliance is controlled by the temperature control knob located on the front face, at the bottom right hand side. Rotate the control knob left or right to regulate the temperature inside the freezer.

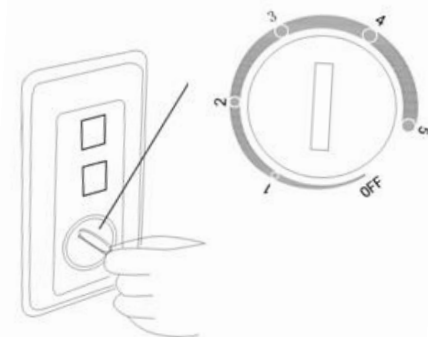
On the temperature control, 1 is the warmest setting and 5 is the coldest setting. Under normal conditions the temperature control should be set between 2 and 3. Once the temperature control has been set, close the door and plug in the appliance. We recommend that the door is not opened for a minimum of 4 hours to allow the appliance to reach the standard operating temperature. The 'OFF' position is an automatic shutdown, and it will defrost.

Note: The standard operating temperature for the freezer compartment should be between -12°C and -30°C.

## Indicator lights

**Red** Indicates the freezer is switched on.

**Green** Indicates the compressor is working. (The green indicator light will switch on and off as required, this is normal)



**Russell Hobbs**

For Customer Services & Spare Parts please call **0345 208 8750**  
Opening times: Monday - Friday 8am – 6pm & Saturday 9am – 1pm  
or visit us at [www.productcareuk.com](http://www.productcareuk.com)



# Power Failure

If there is a power failure during the storage of frozen foods, keep the door closed. If the temperature within your freezer should rise, do not refreeze the food without checking it's condition.

- **Ice Cream:** Once thawed should be discarded.
- **Fruit and Vegetables:** If soft should be cooked and used up.
- **Bread and Cakes:** Can be refrozen without danger.
- **Shellfish:** Should be refrigerated and used up quickly.
- **Cooked Dishes:** i.e. casseroles should be refrigerated and used up.
- **Large Pieces of Meat:** Can be re-frozen providing there are ice crystals remaining within them.
- **Small Joints:** Should be cooked and then re-frozen as cooked dishes.
- **Chicken:** Should be cooked and re-frozen as a fresh dish

## Storage Advice

- Store fresh food in airtight boxes or wrap in bags or foil which is suitable for freezing.
- Do not allow frozen food into direct contact with food to be frozen.
- Pre frozen food must be place in the freezer as quickly as possible after purchasing.
- To prevent frost damage to fresh vegetables or fruits they must be processed appropriately before being placed into the freezer compartment.



**Russell Hobbs**

For Customer Services & Spare Parts please call **0345 208 8750**  
Opening times: Monday - Friday 8am – 6pm & Saturday 9am – 1pm  
or visit us at [www.productcareuk.com](http://www.productcareuk.com)



# Defrosting

**Note: Care must be taken when performing the following procedure.**

Defrost twice a year or when a frost layer of approximately 7 mm (1/4") has formed.

- 6 hours before the defrosting process, set the thermostat knob at "MAX" position to make sure the food is at the lowest temperature before removing the frozen foods. All food should be wrapped in several layers of newspaper and stored in a cool place (e.g. fridge or larder).
- Switch off the appliance at the socket outlet and pull out the mains plug.
- Remove the freezer basket. Leave the lid open. Containers of warm water (not hot) may be placed carefully in the freezer to speed up the defrosting process.
- Never use hairdryers, electrical heaters or other such electrical appliances for defrosting.
- When the ice has melted, drain the water in the bottom of the freezer by removing the rubber cap located inside the appliance in the back, left hand side as illustrated below. Fig.1 (NOTES: PLEASE KEEP THE RUBBER COVER SAFE DURING THE DEFROSTING PROCESS AND PUT IT BACK AFTER THE DEFROSTING PROCESS IS COMPLETE)
- Situated at the rear bottom corner of the appliance, is a small plastic drain tap. Place a container under the drain tap to catch the defrosted water. Pull out the tap just enough to where you can see the hole in the pipe, rotate the hole so that it is at the bottom, water will flow into the container. This may take several attempts to drain all the water. After the draining has been completed, replace the rubber cap in the appliance and rotate the drainage tap so that the hole is facing upwards and push it flush to the appliance. Fig.2,3,4.
- Wipe up any spillages that may have occurred.

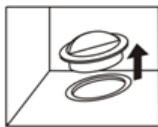


Fig.1

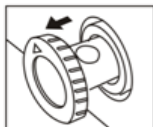


Fig.2

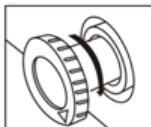


Fig.3



Fig.4



**Never use sharp metal tools as it may damage the appliance.**

**Never use an electrical heater, this may cause an electric shock.**



**Russell Hobbs**

For Customer Services & Spare Parts please call **0345 208 8750**

Opening times: Monday - Friday 8am – 6pm & Saturday 9am – 1pm

or visit us at [www.productcareuk.com](http://www.productcareuk.com)



## Internal Cleaning

**Disconnect the appliance from the power supply before cleaning.**

Do not pour water over the appliance.

The cavity should be cleaned periodically using a solution of bicarbonate of soda and lukewarm water.

Clean the accessories separately with soap and water. Do not put them in the dishwasher.

Do not use abrasive products, detergents or soaps. After washing, rinse with clean water and dry carefully. When the cleaning operations are complete, reconnect the plug with **dry hands**.

## External Cleaning

Wash the outer cabinet with warm soapy water. Do NOT use abrasive products.

There are sharp edges on the underside of the product so care should be taken when cleaning.

## When the Appliance is Not in Use

When the appliance is not in use for long periods, disconnect from the electricity supply, empty all of the food and clean the inside.

Leave the door open to prevent the build-up of odours.



**Russell Hobbs**

For Customer Services & Spare Parts please call **0345 208 8750**

Opening times: Monday - Friday 8am – 6pm & Saturday 9am – 1pm

or visit us at [www.productcareuk.com](http://www.productcareuk.com)



# Troubleshooting

## **If the appliance has stopped functioning completely:**

- Check the electrics in the location of the appliance.
- Check the plug has been correctly connected to the socket.
- Check the fuse in the plug.
- Are there any faults with the socket? For this purpose, try the plug of your appliance by connecting it to a socket which you are sure is working.

## **If your freezer does not get cold enough:**

- Turn the Thermostat control further towards 5.
- Are the doors of your freezer opened frequently and do they remain open for long periods of time? If so, reduce the frequency and length of time the doors are open for.
- Ensure the door is fully shut and the seal is making complete contact to the cabinet.
- Is you're appliance over-filled?

## **If the appliance is operating noisily:**

Occasionally the compressor will make some noise. This is perfectly normal and is part of the cooling process. This noise should also diminish periodically.

## **If the appliance is still noisy:**

- Check the appliance is level. Use a spirit level if necessary. Adjust the feet at the front base of the appliance.
- Check there is nothing behind the appliance.
- If there is a vibrating sound from the shelves or the items placed on the shelves, rearrange the items so that they are more secure.

## **Compressor Noise:**

- This is normal. This noise indicates that the compressor is operating normally.
- As the compressor is being energized, it might run a bit more noisily for a short period of time.



**Russell Hobbs**

For Customer Services & Spare Parts please call **0345 208 8750**  
Opening times: Monday - Friday 8am – 6pm & Saturday 9am – 1pm  
or visit us at [www.productcareuk.com](http://www.productcareuk.com)



**Bubbling and gurgling sound:**

- This noise is emitted as the coolant fluid flows through the pipes within the system. This is normal.

**Water flowing sound:**

- This is the normal sound of water flowing into the drain trough during the defrosting process.

**Excessive moisture build up inside the refrigerator:**

- Check all food is covered and sealed. Check wet containers have not been placed in the appliance.
- Are the doors of the appliance opened frequently? Once the door is opened, the humidity found in the air in the room enters the refrigerator, especially if the humidity levels in the room are very high. The more frequently the door is opened in humid conditions the more chance of the build up of moisture.

**The doors do not close properly:**

- Ensure there are no obstructions preventing door closure.
- Check the door compartments and shelves are correctly in place.
- Check the door seal is not warped or torn.
- Check the appliance is level.



**Russell Hobbs**

For Customer Services & Spare Parts please call **0345 208 8750**  
Opening times: Monday - Friday 8am – 6pm & Saturday 9am – 1pm  
or visit us at [www.productcareuk.com](http://www.productcareuk.com)



## IMPORTANT NOTES:

- In case of a sudden power loss or disconnecting and reconnecting of the plug to the electrical socket, the compressor protective thermal element will be opened, as the pressure of the gas in the cooling system of your refrigerator has not yet been balanced. 4 or 5 minutes later, your refrigerator will start to operate; this is normal.
- If you won't be using your refrigerator for a long time, disconnect the plug from the socket. Clean your refrigerator as per the cleaning instructions and leave the door open to prevent any humidity or odour formation.



**Russell Hobbs**

For Customer Services & Spare Parts please call **0345 208 8750**  
Opening times: Monday - Friday 8am – 6pm & Saturday 9am – 1pm  
or visit us at [www.productcareuk.com](http://www.productcareuk.com)



# Connection to the mains supply

## **WARNING- THIS APPLIANCE MUST BE EARTHED**

This appliance is designed to operate from a mains supply of AC230V ~ 50HZ.  
Check that the voltage marked on the product corresponds with your supply voltage.

For UK use only – Plug fitting details (where applicable):

As the colours of the wires in the mains lead of this appliance may not correspond with the coloured markings identifying the terminals in your plug, proceed as follows:

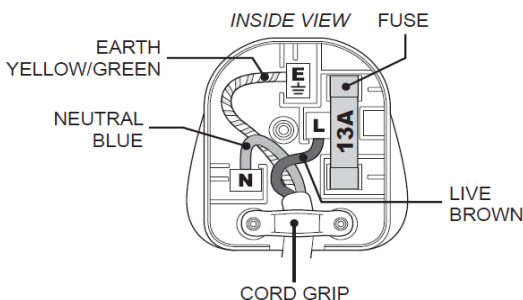
The GREEN/YELLOW wire is the EARTH and must be connected to the terminal which is marked with the letter E or by the earth symbol or coloured GREEN or GREEN/YELLOW.

The BLUE wire is the NEUTRAL and must be connected to the terminal marked with the letter N or coloured BLACK.

The BROWN wire is the LIVE wire and must be connected to the terminal marked with the letter L or coloured RED.

Always ensure that the plug cord grip is fastened correctly.

If a 13A (BS1363) fused plug is used it must be fitted with a 13amp fuse conforming to BS1362 and be BSI or ASTA approved.



**Russell Hobbs**

For Customer Services & Spare Parts please call **0345 208 8750**  
Opening times: Monday - Friday 8am – 6pm & Saturday 9am – 1pm  
or visit us at [www.productcareuk.com](http://www.productcareuk.com)



# Guarantee

This product is guaranteed for 12 months from the date of the original purchase. If any defect arises due to faulty materials or workmanship you must contact Product Care with the original proof of purchase so a replacement or refund can be arranged.

Refund or replacement is at the discretion of Product Care.

## **The following conditions apply:**

- Product Care will require a valid proof of purchase at the point of replacement or refund.
- The product must be installed and used in accordance with the instructions contained in this instruction guide and any other instructions for use which has been supplied.
- It must be used for domestic purposes only and for its intended use.
- This guarantee does not cover wear and tear, damage, misuse or consumable parts.

**This does not affect your statutory rights.**

Imported by  
**G2S LIMITED**  
**WIGAN**  
**WN2 4EZ**



**Russell Hobbs**

For Customer Services & Spare Parts please call **0345 208 8750**  
Opening times: Monday - Friday 8am – 6pm & Saturday 9am – 1pm  
or visit us at [www.productcareuk.com](http://www.productcareuk.com)



# Technical Specification

Rated Voltage	230V – 240V ~ 50Hz
Capacity	200L
External Dimensions(HxWxD)	845mm x 980mm x 560mm
Net Weight; Approx.	38.0 kg
Model number	RHCF200



**Russell Hobbs**

For Customer Services & Spare Parts please call **0345 208 8750**  
Opening times: Monday - Friday 8am – 6pm & Saturday 9am – 1pm  
or visit us at [www.productcareuk.com](http://www.productcareuk.com)



For Customer Services &  
Spare Parts please call

**0345 208 8750**

Opening times:  
Monday – Friday

8am – 6pm

&

Saturday

9am – 1pm

or visit us at

[www.productcareuk.com](http://www.productcareuk.com)

Revision 3



This symbol is known as the 'Crossed-out wheellie bin Symbol'. When this symbol is marked on a product/batteries, it means that the product/batteries should not be disposed of with your general household waste. Only discard electrical/electronic/battery items in separate collection schemes, which cater for the recovery and recycling of materials contained within. Your co-operation is vital to make sure the success of these schemes and for the protection of the environment. For your nearest disposal facility, visit [www.recycle-more.co.uk](http://www.recycle-more.co.uk) or ask in store for details.

We reserve the right due to possible changes to design to alter the instruction manual without prior notice.



Russell Hobbs