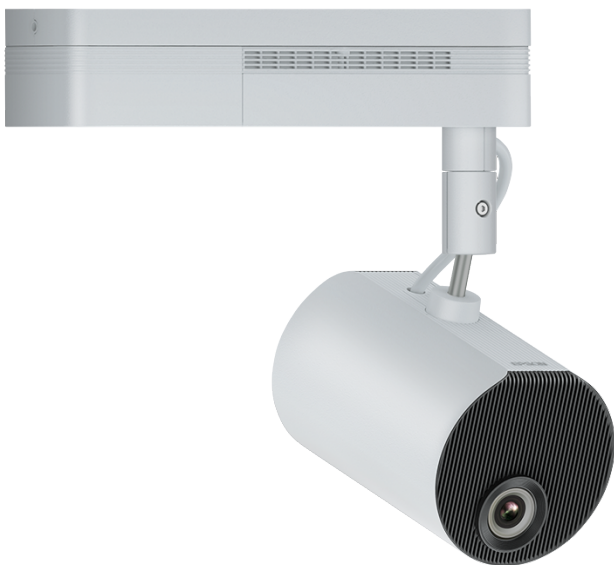


# LightScene EV-100



## DATASHEET / BROCHURE



2,000-lumen WXGA accent lighting projector in white, with a low visual noise design, ideal for retail displays, galleries and museums.

Add movement and life to your retail displays or exhibitions with a low visual noise projector that blends in beautifully to any environment, and blurs the line between lighting and projection with 2,000-lumen brightness and WXGA sharpness.

### A discreet attention-grabber

The LightScene EV-100 allows you to create instantly appealing visuals with sharp WXGA resolution and 2,000-lumen brightness. Yet thanks to its low visual noise white casing, it can be used where a traditional projector would stand out, such as window displays and as part of exhibitions.

### Simple, flexible implementation

A light, flexible design means the EV-100 can be installed in a variety of ways, from a traditional ceiling mount to a freestanding floor mount, or attached to an existing lighting track like a spotlight<sup>1</sup>. It can also be mounted at and project from any angle, including portrait. The projector can be used as a traditional spotlight for when simple lighting effects are needed.

### Easy to program and use

The EV-100 comes with Epson Projector Content Manager Software for quick, easy set-up without specialist installation. Playlists can easily be loaded via SD Card and changed using remote control by employees without the need for a computer. The projector can also use advanced techniques such as edge-blending to achieve stunning results in larger spaces that require multiple-unit installations.

### Fit and forget reliability

A five-year, 20,000-hour warranty, coupled with Epson's durable, reliable inorganic phosphor wheel technology means that EV-100 projectors can be installed and forgotten about, and don't require regular maintenance.

## KEY FEATURES

- **Discreet signage projector**  
Low visual noise white casing won't grab the spotlight
- **Sharp, vivid projection**  
2,000-lumen brightness and detailed WXGA resolution
- **Flexible installation**  
Can be ceiling-mounted, floorstanding or attached to a lighting track
- **Easy playlist loading**  
Playlist can be loaded from an SD Card without the need for a computer
- **Fit and forget reliability**  
Durable Epson technology supported by a five-year 20,000-hour warranty



**EPSON**  
**WORLD LEADER**  
**IN PROJECTORS**

Source: Futuresource Consulting Ltd.

**EPSON®**  
**EXCEED YOUR VISION**

## PRODUCT SPECIFICATIONS

### TECHNOLOGY

Projection System	3LCD Technology
LCD Panel	0.59 inch with C2 Fine

### IMAGE

Colour Light Output	2,000 lumen- 1,000 lumen (economy) In accordance with IDMS15.4
White Light Output	2,000 lumen - 1,000 lumen (economy) In accordance with ISO 21118:2012
Portrait Colour Light Output	2,000 lm
Portrait White Light Output	2,000 lm
Resolution	WXGA, 1280 x 800, 16:10
Contrast Ratio	2,500,000 : 1
Native Contrast	1,200 : 1
Keystone Correction	Manual vertical: $\pm 45^\circ$ , Manual horizontal $\pm 40^\circ$
Colour Reproduction	16.77 million colours

### OPTICAL

Projection Ratio	1.38 - 2.19:1
Zoom	Motorized, Factor: 1 - 1.58
Image Size	30 inches - 133 inches
Projection Distance Wide	0.9 m - 4 m
Projection Distance Tele	1.4 m - 6.3 m
Projection Distance Wide/Tele	0.88 m - 6.34 m
Projection Lens F Number	1.51 - 1.92
Focal Distance	18.2 mm - 28.4 mm
Focus	Motorized

### CONNECTIVITY

Interfaces	USB 2.0 Type A, USB 2.0 Type B (Service Only), Ethernet interface (100 Base-TX / 10 Base-T), Wireless LAN b/g/n (2.4GHz), HDMI in, Stereo mini jack audio out, SD Card Slot
------------	---

### ADVANCED FEATURES

Security	Wireless LAN security, Password protection
Features	Auto brightness adjustment, Digital zoom, Horizontal and vertical keystone correction, Quick Corner
Video Colour Modes	Dynamic

### GENERAL

Energy Use	170 W, 118 W (economy), 0.3 W (standby)
Product weight	5 kg

## LightScene EV-100

### WHAT'S IN THE BOX

- User's Manual Set
- Power cable
- Remote control incl. batteries
- HDMI Cable Clamp
- Cable cover

## LOGISTICS INFORMATION

SKU	V11H868041
EAN code	8715946647494
Dimensions Single Carton	535 x 477 x 244 mm
Carton Weight	9.59 Kg
Country of Origin	China



For more information please contact:

Home users: 0343 90 37766  
Business users\*: 0871 42 37766  
Republic of Ireland: 01 436 7742  
Or visit us at <https://www.epson.co.uk/contactus>  
\* 10p per minute plus network extras.

Web: [www.epson.co.uk](http://www.epson.co.uk)  
[www.epson.ie](http://www.epson.ie)

1. Floor stand and lighting track are purchasable options.

Trademarks and registered trademarks are the property of Seiko Epson Corporation or their respective owners.  
Product information is subject to change without prior notice.

**EPSON**<sup>®</sup>