



BOSCH



Register your
new device on
MyBosch now and
get free benefits:
**[bosch-home.com/
welcome](https://www.bosch-home.com/welcome)**

Tumble dryer

WQB246C9GB

[en] User manual and installation
instructions

Further information and explanations are available online:



Table of contents

1 Safety	4	8 Dryness level	29
1.1 General information	4	8.1 Changing the dryness level.....	29
1.2 Intended use.....	4	8.2 Adjusting the dryness level	29
1.3 Restriction on user group.....	4	9 Programmes	30
1.4 Safe installation	5	9.1 Automatic programmes.....	30
1.5 Safe use	7	9.2 Timed programmes.....	31
1.6 Safe cleaning and maintenance.....	9	10 Accessories	33
2 Preventing material damage	11	11 Laundry	34
3 Environmental protection and saving energy	11	11.1 Preparing the laundry.....	34
3.1 Disposing of packaging	11	12 Basic operation	34
3.2 Saving energy.....	11	12.1 Switching on the appliance... ..	34
3.3 Energy saving mode	12	12.2 Setting a programme	34
4 Installation and connection	12	12.3 Adjusting the programme settings	34
4.1 Unpacking the appliance	12	12.4 Saving the programme settings.....	35
4.2 Scope of delivery.....	12	12.5 Loading laundry.....	35
4.3 Requirements for the installation location	13	12.6 Starting the programme	35
4.4 Water drain hose	13	12.7 Adding laundry	35
4.5 Aligning the appliance.....	16	12.8 Cancelling the programme... ..	35
4.6 Reversing the door.....	16	12.9 Unloading the laundry	35
4.7 Connecting the appliance to the electricity supply.....	19	12.10 Put the appliance into standby mode	35
5 Familiarising yourself with your appliance.....	20	12.11 Fluff filter.....	36
5.1 Appliance	20	12.12 Condensation container	37
5.2 Control panel.....	21	13 Childproof lock.....	38
5.3 Operating logic.....	21	13.1 Activating the childproof lock.....	38
6 Display	22	13.2 Deactivating the childproof lock.....	38
7 Buttons	24		

14 Crease-removal function	39	19 Troubleshooting.....	50
14.1 Starting a programme with the crease-removal function..	39	20 Transportation, storage and disposal	55
14.2 Filling the water tank	39	20.1 Preparing the appliance for transportation	55
15 Home Connect	40	20.2 Disposing of old appliance ...	55
15.1 Setting up the Home Con- nect app	40	21 Customer Service.....	56
15.2 Setting up Home Connect.....	41	21.1 Product number (E-Nr.), production number (FD) and consecutive numbering (Z-Nr.)	56
15.3 Home Connect menu	41	22 Consumption values	57
15.4 Activating Wi-Fi on the ap- pliance	41	23 Technical data	58
15.5 Deactivating Wi-Fi on the appliance	41	24 Declaration of Conformity	59
15.6 Resetting the appliance network settings	41		
15.7 Remote start.....	42		
15.8 Intelligent programme re- commendation.....	42		
15.9 Remote diagnostics	42		
15.10 Data protection.....	43		
16 Basic settings.....	44		
16.1 Overview of the basic set- tings.....	44		
16.2 Changing the basic set- tings.....	45		
17 Appliance care	45		
17.1 Preparing for appliance care	45		
17.2 Calling up the appliance care programme.....	45		
17.3 Running the basic appli- ance care programme	46		
17.4 Running the intensive appli- ance care programme	46		
18 Cleaning and servicing	48		
18.1 Tips on cleaning and care	48		
18.2 Water tank filter	48		
18.3 Moisture sensor.....	48		
18.4 Condensation container fil- ter	49		



1 Safety

Observe the following safety instructions.

1.1 General information



- Read this instruction manual carefully.
- Keep the instruction manual and the product information safe for future reference or for the next owner.
- Do not connect the appliance if it has been damaged in transit.

1.2 Intended use

Only use this appliance:

- for drying and freshening up fabrics that are washed with water and suitable for dryers.
- in private households and in enclosed spaces in a domestic environment.
- up to an altitude of max. 4000 m above sea level.

1.3 Restriction on user group

This appliance may be used by children aged 8 or over and by people who have reduced physical, sensory or mental abilities or inadequate experience and/or knowledge, provided that they are supervised or have been instructed on how to use the appliance safely and have understood the resulting dangers.

Do not let children play with the appliance.

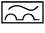
Cleaning and user maintenance must not be performed by children unless they are being supervised.

Keep children under the age of 3 years and pets away from the appliance.

1.4 Safe installation

⚠ WARNING – Risk of electric shock!

Incorrect installation is dangerous.

- ▶ Connect and operate the appliance only in accordance with the specifications on the rating plate.
- ▶ Connect the appliance to a power supply with alternating current only via a properly installed socket with earthing.
- ▶ The protective conductor system of the domestic electrical installation must be properly installed. The installation must have a sufficiently large cross section.
- ▶ When using a residual current circuit breaker, only use a type with the  mark.
- ▶ Never equip the appliance with an external switching device, e.g. a timer or remote control.
- ▶ Never connect the appliance to a circuit that is regularly switched on and off by the energy supplier.
- ▶ When the appliance is installed, the mains plug of the power cord must be freely accessible. If free access is not possible, an all-pole isolating switch must be installed in the permanent electrical installation according to the installation regulations.
- ▶ When installing the appliance, check that the power cable is not trapped or damaged.

If the insulation of the power cord is damaged, this is dangerous.

- ▶ Never let the power cord come into contact with hot appliance parts or heat sources.
- ▶ Never let the power cord come into contact with sharp points or edges.
- ▶ Never kink, crush or modify the power cord.

⚠ WARNING – Risk of fire!

It is dangerous to use an extended power cord and non-approved adapters.

- ▶ Do not use extension cables or multiple socket strips.
- ▶ Only use adapters and power cords approved by the manufacturer.

- ▶ If the power cord is too short and a longer one is not available, please contact an electrician to have the domestic installation adapted.

⚠ WARNING – Risk of injury!

The high weight of the appliance may result in injury when lifted.

- ▶ Do not lift the appliance on your own.

If this appliance is not correctly installed in a washer-dryer stack, the installed appliance may fall.

- ▶ Only stack the dryer on a washing machine using the connection kit from the dryer manufacturer
→ "Accessories", Page 33. No other installation method is permitted.
- ▶ Do not install the appliance in a washer-dryer stack if the dryer manufacturer does not offer a suitable connection kit.
- ▶ Do not install appliances from different manufacturers and with varying depths and widths in a washer-dryer stack.
- ▶ Do not install a washer-dryer stack on a platform; the appliances may tip over.

⚠ WARNING – Risk of suffocation!

Children may put packaging material over their heads or wrap themselves up in it and suffocate.

- ▶ Keep packaging material away from children.
- ▶ Do not let children play with packaging material.

⚠ CAUTION – Risk of injury!

The appliance may vibrate or move when in use.

- ▶ Place the appliance on a clean, even, solid surface.
- ▶ Align the appliance using the appliance feet and a spirit level.

If hoses and power cords have been laid incorrectly, this causes a tripping hazard.

- ▶ Lay hoses and power cords in such a way that there is no risk of tripping.

If the appliance is moved by holding onto protruding components, such as the appliance door, the parts may break off.

- ▶ Do not move the appliance by holding onto protruding parts.

⚠ CAUTION – Risk of cutting!

Touching sharp edges on the appliance may lead to cuts.

- ▶ Do not touch the sharp edges on the appliance.
- ▶ Wear protective gloves when installing and transporting the appliance.

1.5 Safe use**⚠ WARNING – Risk of electric shock!**

If the appliance or the power cord is damaged, this is dangerous.

- ▶ Never operate a damaged appliance.
- ▶ Never pull on the power cord to unplug the appliance. Always unplug the appliance at the mains.
- ▶ If the appliance or the power cord is damaged, immediately unplug the power cord or switch off the fuse in the fuse box.
- ▶ Call customer services. → *Page 56*

An ingress of moisture can cause an electric shock.

- ▶ Only use the appliance in enclosed spaces.
- ▶ Never expose the appliance to intense heat or humidity.
- ▶ Do not use steam- or high-pressure cleaners, hoses or sprays to clean the appliance.

⚠ WARNING – Risk of harm to health!

Children can lock themselves in the appliance, thereby putting their lives at risk.

- ▶ Do not install the appliance behind a door as this may obstruct the appliance door or prevent it from opening.
- ▶ With redundant appliances, unplug the power cord. Then cut through the cord and damage the lock on the appliance door beyond repair so that the appliance door will no longer close.

⚠ WARNING – Risk of suffocation!

Children may breathe in or swallow small parts, causing them to suffocate.

- ▶ Keep small parts away from children.
- ▶ Do not let children play with small parts.

⚠ WARNING – Risk of explosion!

If there is coal dust or flour in the air around the appliance, this may cause an explosion.

- ▶ Keep the area around the appliance clean during operation.

⚠ WARNING – Risk of poisoning!

Condensation water from this appliance is not suitable for drinking and may be contaminated with fluff.

- ▶ Do not drink or reuse the condensation water from the appliance.

Detergents and care products may result in poisoning if consumed.

- ▶ If accidentally swallowed, seek medical advice.
- ▶ Keep detergents and care products out of the reach of children.

⚠ WARNING – Risk of fire!

The refrigerant R290 in this appliance is environmentally friendly yet combustible and may ignite if it comes into contact with open flames or ignition sources.

- ▶ Keep naked flames and ignition sources away from the appliance.



ance.

⚠ WARNING – Risk of explosion!

If there is any residual material left in the fluff filter, this may ignite during the drying process.

- ▶ Clean the fluff filter regularly.

Highly flammable objects such as lighters or matches may ignite during the drying process.

- ▶ Remove all highly flammable objects from any pockets in your laundry before the drying process.

Unwashed laundry that has come into contact with solvents, oil, wax, wax remover, paint, grease or stain remover may ignite when drying is in progress.

- ▶ Do not place laundry in this appliance to be dried if the laundry has not been washed first.

- ▶ Rinse the laundry thoroughly with warm water and detergent before drying it in the machine.
- ▶ Do not use the appliance if industrial chemicals have been used to clean the laundry beforehand.

⚠ WARNING – Risk of fire!

If drying is interrupted early, the laundry is not cooled sufficiently and may ignite.

- ▶ Do not interrupt the drying programme early.
- ▶ If drying is interrupted early, remove the laundry immediately and spread it out.

⚠ CAUTION – Risk of injury!

The covering plate may break if you stand on or climb onto the appliance.

- ▶ Do not stand on or climb onto the appliance.

The appliance may tip over if you sit on or lean against the open door.

- ▶ Do not sit on or lean against the appliance door.
- ▶ Do not place any objects on the appliance door.

Reaching into the drum while it is still turning may cause hand injuries.

- ▶ Wait for the drum to come to a complete stop before reaching inside.

1.6 Safe cleaning and maintenance


⚠ WARNING – Risk of electric shock!

Improper repairs are dangerous.

- ▶ Never make any technical modifications to the appliance or its features.
- ▶ Repairs to the appliance should only be carried out by trained specialist staff.
- ▶ Only use genuine spare parts when repairing the appliance.
- ▶ If the power cord of this appliance is damaged, it must be replaced by the manufacturer, the manufacturer's Customer Service or a similarly qualified person in order to prevent any risk.

An ingress of moisture can cause an electric shock.

- ▶ Do not use steam- or high-pressure cleaners, hoses or sprays to clean the appliance.

 WARNING – Risk of injury!

The use of non-original spare parts and non-original accessories is dangerous.

- ▶ Only use the manufacturer's original spare parts and original accessories.

 WARNING – Risk of poisoning!

Poisonous fumes may be given off if you use cleaning agents that contain solvents.

- ▶ Do not use cleaning agents that contain solvents.

2 Preventing material damage

ATTENTION!

The functionality of the appliance may be impaired if you use the wrong quantity of fabric softener, detergent, care product or cleaning agent.

- ▶ Follow the dosage recommendations from the manufacturer.

Exceeding the maximum load capacity impairs the function of the appliance.

- ▶ Observe the maximum load capacity for each programme and do not exceed it.

→ *"Programmes", Page 30*

The function of the appliance may be impaired if the appliance overheats.

- ▶ Keep the ventilation opening on the appliance clear during operation.
- ▶ Make sure that the area is adequately ventilated.

Light objects such as hair and fluff may be sucked in from the ventilation opening on the appliance during operation and impair the function of the appliance.

- ▶ Keep the area around the appliance clean during operation.
- ▶ Keep light objects away from the appliance.

Foam and foam rubber may deform or melt during the drying process.

- ▶ Do not dry laundry that contains foam or foam rubber.

Unsuitable cleaning products may damage the surfaces of the appliance.

- ▶ Do not use harsh or abrasive detergents.
- ▶ Do not use cleaning products with a high alcohol content.
- ▶ Do not use hard scouring pads or cleaning sponges.

- ▶ Clean the appliance with nothing but water and a soft, damp cloth.
- ▶ Remove all detergent residue, spray residue or other residues immediately if they come into contact with the appliance.

3 Environmental protection and saving energy

3.1 Disposing of packaging

The packaging materials are environmentally compatible and can be recycled.

- ▶ Sort the individual components by type and dispose of them separately.

3.2 Saving energy

If you follow these instructions, your appliance will use less power.

Operate the appliance in a well-ventilated room and keep the ventilation opening on the appliance clear.

- ✓ If air exchange is impeded, this extends the programme duration and increases energy consumption.

Spin the laundry in the washing machine before drying.

- ✓ Damper laundry extends the programme duration and increases energy consumption.

Observe the programme's maximum load capacity.

→ *"Programmes", Page 30*

- ✓ If the maximum load is exceeded, this extends the programme duration and increases energy consumption.

After drying, clean the fluff filter
→ Page 36.

- ✓ If the fluff filter is dirty, this reduces the air flow in the appliance, extends the programme duration and increases energy consumption.

Deactivate Wi-Fi on the appliance if it is not being used.

→ "Deactivating Wi-Fi on the appliance", Page 41.

- ✓ If the Wi-Fi is activated, this increases energy consumption.

3.3 Energy saving mode

If you do not use the appliance for an extended period, it automatically switches to energy-saving mode. All displays go out and ▷ flashes. Energy-saving mode ends when you use the appliance again.

If you do not continue operating the appliance, it automatically switches to standby mode.

4 Installation and connection

4.1 Unpacking the appliance

ATTENTION!

Objects remaining in the drum that are not designed for operation with the appliance may cause material damage and damage to the appliance.

- ▶ Remove these objects, along with all supplied accessories, from the drum before starting the appliance.

1. Remove any packaging and protective covers completely from the appliance.

→ "Disposing of packaging", Page 11

2. Check the appliance for visible damage.
3. Open the door.
4. Remove any accessories from the drum.
5. Close the door.

4.2 Scope of delivery

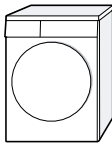


After unpacking all parts, check for any damage in transit and completeness of the delivery.


ATTENTION!

If the appliance is operated with incomplete or defective accessories, the appliance may not be able to operate properly, or this may result in material damage or damage to the appliance.

- ▶ Do not operate the appliance with incomplete or defective accessories.
- ▶ Replace the accessories in question before operating the appliance.

→ "Accessories", Page 33

Included with the appliance	Description
	Tumble dryer
	Accompanying documents
	Water drain hose with connection adapter, fixing material and elbow. → "Water drain hose", Page 13

Included with the appliance	Description
	Water jug → "Filling the water tank", Page 39

4.3 Requirements for the installation location

ATTENTION!

If the appliance is tilted at an angle greater than 40°, residual water may leak out of the appliance and cause material damage.

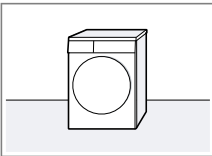
- ▶ Tilt the appliance carefully.
- ▶ Transport the appliance in an upright position.

If residual water in the appliance freezes, this may cause damage to the appliance.

- ▶ Do not install or operate this appliance anywhere that is liable to experience frost or outdoors.

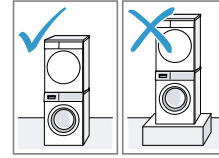
If the appliance is operated immediately after transportation, the refrigerant contained in the appliance may result in damage to the appliance.

- ▶ Immediately after transporting the appliance, leave it to rest for two hours before putting it into operation.

Installation location	Requirements
On the floor 	Place the appliance on a clean, level and firm surface. Align the appliance → Page 16.

Installation location	Requirements
-----------------------	--------------

In a washer-dryer stack



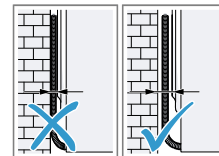
Only use the original connection set from the dryer manufacturer when setting up this appliance in a washer-dryer stack.

- Connection kit with pull-out worktop
→ Page 33
- Connection kit
→ Page 33

This appliance must only be stacked on a washing machine from the same manufacturer. The depth and width of this appliance must correspond with the dimensions of the washing machine.

Do not place the washer-dryer stack on a platform.

Against a wall



Do not trap the hoses and power cord between the wall and the appliance.

4.4 Water drain hose

Condensation that forms in the appliance as it dries the laundry is collected by default in the condensation

en Installation and connection

container. Use the water outlet hose to drain away excess condensation directly into the waste water system.

Notes

- Operate this appliance using the water outlet hose provided.
→ *"Connecting the water drain hose", Page 14*
If you connect the water outlet hose, you do not have to regularly empty the condensation container.
→ *"Emptying the condensation container", Page 37*
- You can order this optional
→ *"Accessories", Page 33* from our customer service.

Connecting the water drain hose

If you do not want to regularly empty the appliance's condensation container, connect the water outlet hose.

ATTENTION!

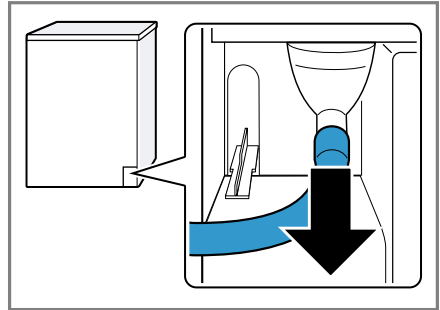
When operating the appliance without the water drain hose being connected properly, liquid may leak out of the connecting piece.

- ▶ Before operating the appliance, connect the water drain hose properly to the connecting piece.

Requirements

- The appliance and the accessory have been unpacked.
→ *"Unpacking the appliance", Page 12*
- The appliance is installed at the installation location.
→ *"Requirements for the installation location", Page 13*

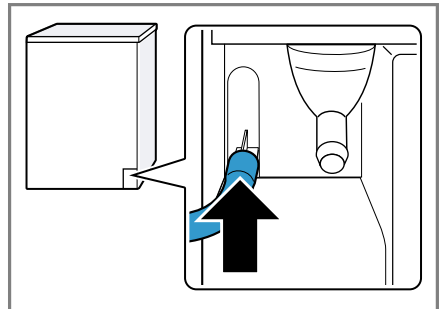
1. Pull out the condensation hose from the connecting piece.



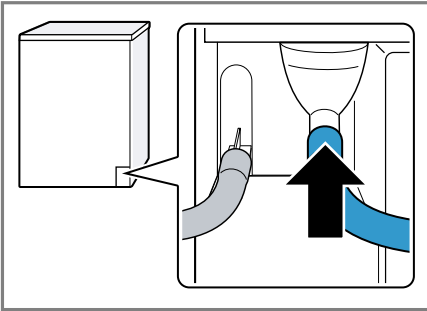
The condensation hose is connected to the connecting piece at the factory.

Note: When removing the condensation hose, liquid may leak out of the connecting piece.

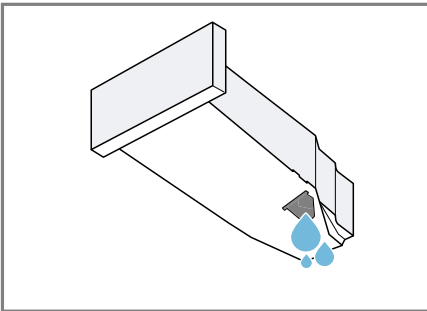
2. Push the condensation hose into the holder.



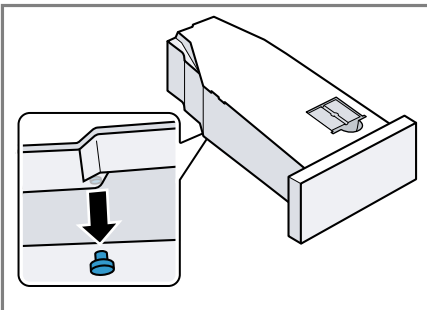
3. Push the water drain hose as far as it will go into the connecting piece.



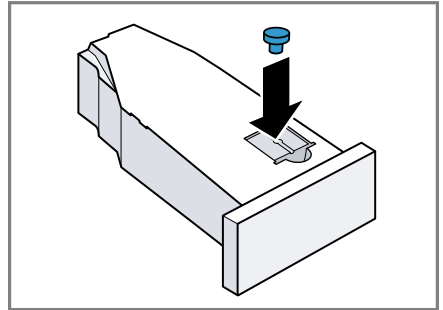
4. Empty the condensation container → Page 37.



5. Remove the stopper on the underside.



6. Insert the stopper into the recess in the top.



7. Insert the condensation container → Page 38.
 8. Connect the appliance to the water outlet.
 → "Water outlet connection types", Page 15

Tip: To collect condensation in the condensation container again (e.g. if you change where the appliance is located), carry out these steps in reverse order.

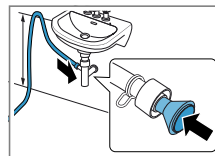
Water outlet connection types

ATTENTION!

In the event of a blocked or covered outlet, accumulated wastewater can flow back into the appliance.

- ▶ Before operating the appliance, ensure that the wastewater drains away quickly and eliminate any blockages.

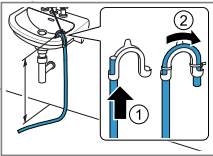
Drainage into a siphon.



Secure the connection point with a (12-22 mm) hose clamp.
 Secure the water outlet hose with a hose guide at a height of at least 80 cm and no more than 100 cm.

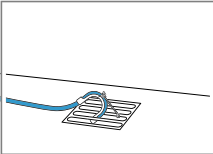
Note: You can use the Y-distributor → Page 33 to connect the water drain hose of an additional appliance, such as a washing machine, to the same siphon outlet.

Drainage into a wash basin.



Push the water drain hose fully through the elbow → Page 12 and secure it using fixing material. Secure the elbow at a height of no more than 100 cm.

Drainage into a gully.

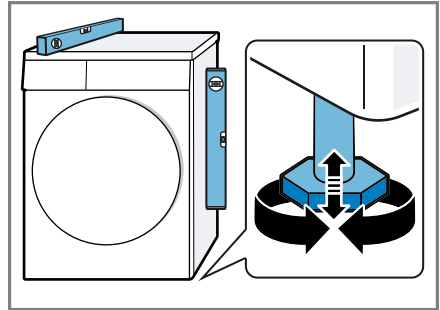


Push the water drain hose fully through the elbow → Page 12 and secure it using fixing material. Secure the elbow to the gully.

4.5 Aligning the appliance

In order to reduce vibrations and noises, align the appliance correctly.

- ▶ To align the appliance, turn the appliance feet. Check that the appliance is level using a spirit level.



All appliance feet must stand firmly on the ground.

4.6 Reversing the door

To make it easier to place and remove laundry in the drum, you can change the side on which the door is hinged.

⚠ CAUTION **Risk of cutting!**

Touching sharp edges on the appliance may lead to cuts.

- ▶ Do not touch the sharp edges on the appliance.
- ▶ Wear protective gloves when installing and transporting the appliance.

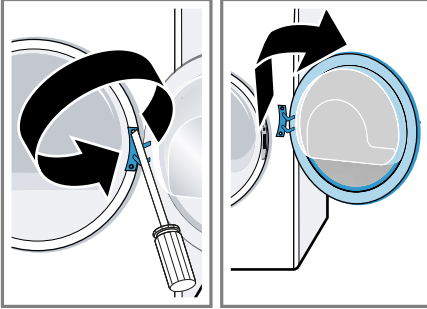
Notes

- Only use a Torx T15 screwdriver and a Torx T20 screwdriver to remove and insert screws.
- To prevent material damage, lay the removed door on a level and soft surface.

Removing the door

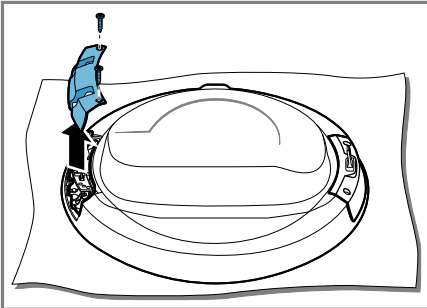
Requirement: The appliance is disconnected from the mains.

1. Open the door.
2. Unscrew the door.

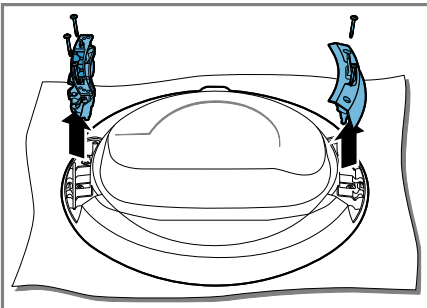


Changing the door hinge and door hook

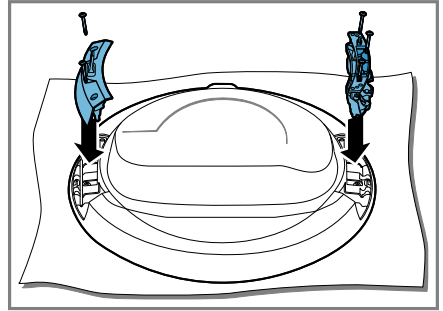
1. Unscrew the door hinge cover.



2. Unscrew the door hinge and the door hook.

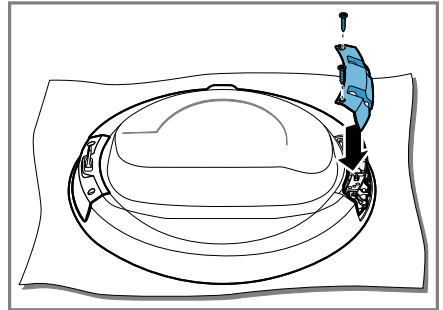


3. Screw the door hinge and the door hook onto the opposite sides.



When you do this, ensure that the door seal is not trapped or damaged.

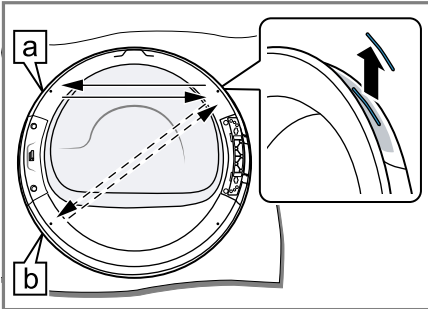
4. Screw on the door hinge cover.



When you do this, ensure that the door seal is not trapped or damaged.

en Installation and connection

5. Remove the colour door handle indicator and swap it with the cover on the opposite side.

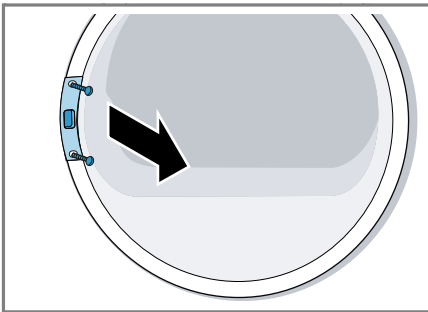


Select the position of the door handle indicator based on the appliance's installation location:

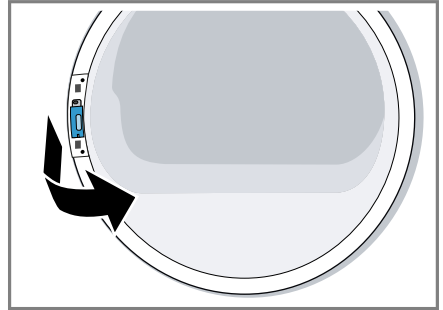
- [a] The appliance is installed on the floor.
- [b] The unit is installed in a raised position in a washer-dryer stack.

Changing the door lock

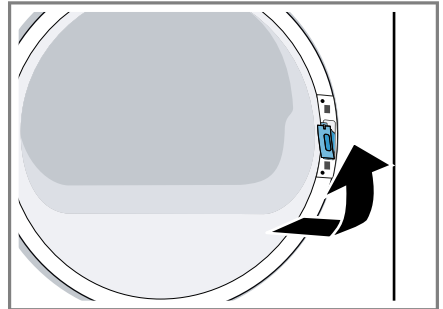
1. Unscrew the door lock cover.



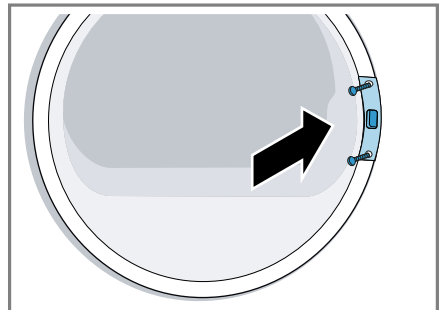
2. Remove the door lock.



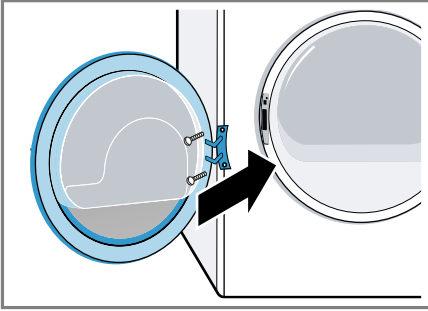
3. Insert the door lock on the opposite side.



4. Screw on the door lock cover.



5. Screw on the door.



4.7 Connecting the appliance to the electricity supply

1. Insert the mains plug of the appliance's power cable in a socket nearby.

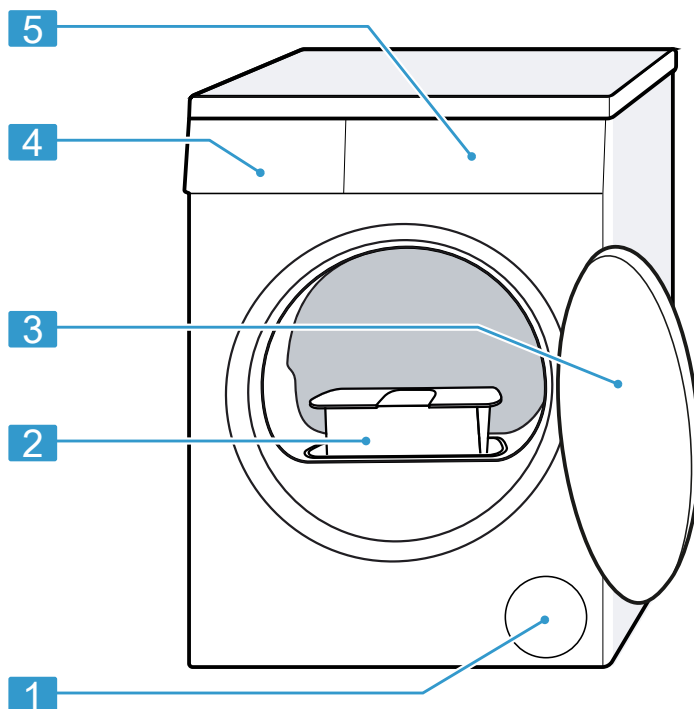
The connection details of the appliance can be found under Technical data → *Page 58*.

2. Check the mains plug is inserted properly.

5 Familiarising yourself with your appliance

5.1 Appliance

You can find an overview of the parts of your appliance here.



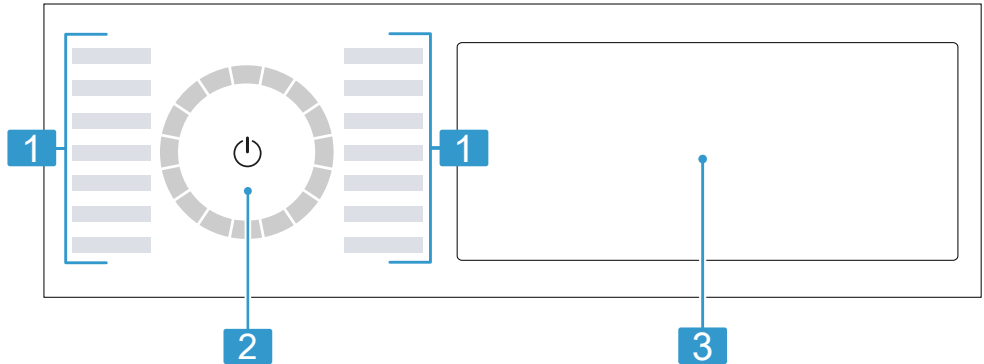
On certain models, specific details such as the colour and shape may differ from those pictured.

1	Ventilation opening
2	Fluff filter → <i>Page 36</i>
3	Door

4	Condensation container → <i>Page 37</i>
5	Control panel → <i>Page 21</i>

5.2 Control panel

You can use the control panel to configure all functions of your appliance and to obtain information about the operating status.



1 Programmes → *Page 30*

2 Programme selector
→ *Page 34*

3 Buttons → *Page 24* and display → *Page 22*

5.3 Operating logic

Some areas of the display are buttons and respond to touch. You can activate, deactivate or change settings by pressing the buttons. The activated settings are highlighted brightly on the display.

ATTENTION!

Pressing on the display with force may cause damage.

- ▶ Do not apply heavy pressure on the display.
- ▶ Do not press on the display using pointed or sharp objects.

Changing a setting value

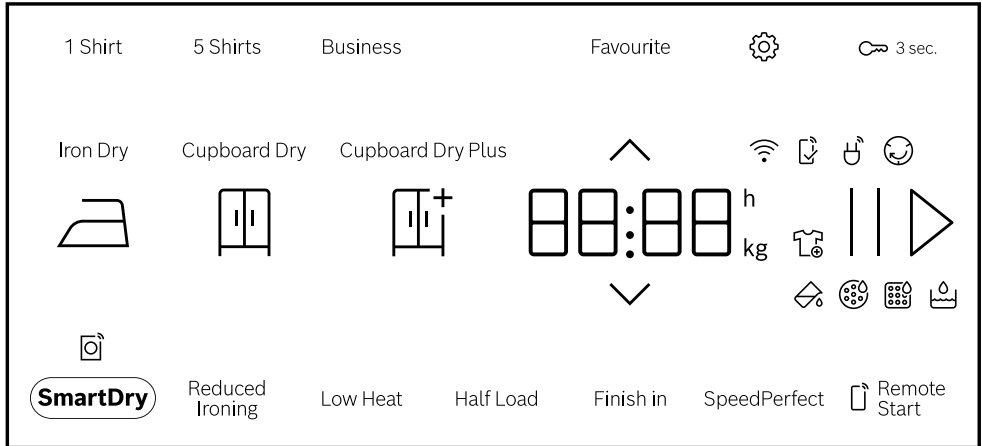
If you activate certain settings, the display shows selection buttons and you can change the setting value.

- ▶ Press the selection buttons
→ *Page 24*.

The display shows the setting value.





6 Display

The display shows the current settings, options or relevant information.






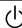





Example: Display




Display	Description
0:40 ¹	Expected programme duration or programme time remaining in hours and minutes.
9.0 ¹	Recommendation for the maximum load capacity for the selected program in kg.
10h ¹	Program end time → "Buttons", Page 28
	You can remove or add laundry, and interrupt the current programme. → "Adding laundry", Page 35
	Empty and insert the condensation container. → "Emptying the condensation container", Page 37
	Clean the fluff filter. → "Cleaning the fluff filter", Page 36
CARÉ	Run the basic appliance care programme. → "Appliance care", Page 45
	Fill the water tank for the crease-removal function. → "Filling the water tank", Page 39
¹ Example	



Display	Description
Hot	The cooling process cools the laundry for a few minutes while the drum is rotating, in order to avoid damage to the laundry. The cooling process can be cancelled by opening the door. Note: Do not change the set programme.
	<ul style="list-style-type: none"> ■ Lights up: The appliance is connected to your home network via Wi-Fi. ■ Flashes: The appliance is trying to connect to your home network via Wi-Fi. → "Home Connect ", Page 40
	Settings that are not available on the appliance have been set via the Home Connect app. You can find more information in the Home Connect app.
	Crease-reduction function Programme status
	Pause Programme status
End	Program end Programme status
¹ Example	


7 Buttons



Below is an overview of the buttons and their setting options.

Button	Selection	Description
	<ul style="list-style-type: none"> ■ Start ■ Cancel ■ Pause 	<p>Start, cancel or pause the programme.</p> <p>If  is displayed, you can pause the programme.</p> <p>If  is displayed, you can start the programme.</p>
 (mains switch)	<ul style="list-style-type: none"> ■ Switch on ■ Standby mode 	<p>Switch on the appliance or put it in standby mode.</p>
 3 sec.	<ul style="list-style-type: none"> ■ Activate ■ Deactivate 	<p>Activate or deactivate the childproof lock.</p> <p>Disable the control panel to prevent unwanted or accidental operation.</p> <p>If the childproof lock is activated and the appliance has been switched off, the childproof lock remains activated.</p> <p>→ <i>"Childproof lock"</i>, <i>Page 38</i></p>
	Multiple selection	<p>To change a setting, press the  or  selection button until the display shows the required setting.</p>
	Multiple selection	<p>→ <i>"Basic settings"</i>, <i>Page 44</i></p>

Button	Selection	Description
Favourite	<ul style="list-style-type: none"> ■ Saving ■ Setting 	<p>Press the button for approx. 3 seconds to save your customised program settings. → "Saving the programme settings", Page 35 If you briefly press the button, you can set customised program settings for your program.</p>
Cupboard Dry Plus 	<ul style="list-style-type: none"> ■ Activate ■ Deactivate 	<p>The dryness level defines how damp or dry the laundry is after the programme ends. → "Dryness level", Page 29</p>
Cupboard Dry 	<ul style="list-style-type: none"> ■ Activate ■ Deactivate 	<p>The dryness level defines how damp or dry the laundry is after the programme ends. → "Dryness level", Page 29</p>
Iron Dry 	<ul style="list-style-type: none"> ■ Activate ■ Deactivate 	<p>The dryness level defines how damp or dry the laundry is after the programme ends. → "Dryness level", Page 29</p>

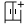

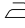
Button	Selection	Description
5 Shirts	<ul style="list-style-type: none"> ■ Activate ■ Deactivate 	<p>Adjust the set programme with crease-removal function Iron Assist  .</p> <p>→ "<i>Crease-removal function</i>", Page 39</p> <p>Suitable for dry shirts and blouses that have only been worn once. Activate for 2 to 5 items of laundry.</p> <p>Notes</p> <ul style="list-style-type: none"> ■ The laundry is not dried or washed. ■ To prevent creasing, remove the laundry after the programme ends.
Business	<ul style="list-style-type: none"> ■ Activate ■ Deactivate 	<p>Adjust the set programme with crease-removal function Iron Assist  .</p> <p>→ "<i>Crease-removal function</i>", Page 39</p> <p>Suitable for dry suits, jackets and trousers that have not been worn for long and are labelled "Dry clean only". Activate for one suit or two items of laundry.</p> <p>Notes</p> <ul style="list-style-type: none"> ■ The laundry is not dried or washed. ■ To prevent creasing, remove the laundry after the programme ends. ■ The programme is not suitable for thin, light-weight summer suits.

Button	Selection	Description
1 Shirt	<ul style="list-style-type: none"> ■ Activate ■ Deactivate 	<p>Adjust the set programme with crease-removal function Iron Assist  .</p> <p>→ "Crease-removal function", Page 39</p> <p>Suitable for dry shirts and blouses that have only been worn once. Activate for one item of laundry.</p> <p>Notes</p> <ul style="list-style-type: none"> ■ The laundry is not dried or washed. ■ To prevent creasing, remove the laundry after the programme ends.
Reduced Ironing	<ul style="list-style-type: none"> ■ Activate ■ Deactivate 	<p>Activate or deactivate the crease-reduction function.</p> <p>Once the programme has ended, the drum moves the laundry at regular intervals for 120 minutes to prevent creasing.</p>
SpeedPerfect	<ul style="list-style-type: none"> ■ Activate ■ Deactivate 	<p>Activate or deactivate a shorter programme duration.</p> <p>Note: The energy consumption increases. This does not impair the drying result.</p>
Low Heat	<ul style="list-style-type: none"> ■ Activate ■ Deactivate 	<p>Activate or deactivate gentle drying.</p> <p>The temperature is reduced for delicate fabrics, e.g. polyacrylic or elastane.</p> <p>The programme duration is extended.</p>

Button	Selection	Description
Finish in	Up to 24 hours	Set the programme end time. The programme duration is already included in the set number of hours. Once the programme has started, the programme duration is displayed.
Half Load	<ul style="list-style-type: none"> ■ Activate ■ Deactivate 	Dry individual items of laundry or small loads of laundry.
 SmartDry	Activate	After you have washed your laundry in the washing machine, the dryer recommends a suitable programme for drying the laundry. Note: The washing machine must be compatible with Home Connect. The washing machine and dryer must be connected to your home network and registered in your Home Connect app.
 Remote Start	<ul style="list-style-type: none"> ■ Activate ■ Deactivate ■ Open the Home Connect menu 	→ "Remote start", Page 42


8 Dryness level

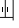
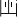



Each automatic programme has a specified dryness level. The dryness level defines how dry or damp your laundry is after the programme ends.

Dryness level	Laundry	Drying result
	Multi-layered, thick laundry that does not dry readily.	The laundry is dry.
	Normal, single-layered laundry.	The laundry is dry.
	Normal, single-layered laundry.	The laundry is still slightly damp. To prevent creasing after drying, iron the laundry or hang it up.

8.1 Changing the dryness level

For some automatic programmes, you can change the dryness level so that your laundry will be drier or more damp.

1. Set an automatic programme.
→ "Automatic programmes",
Page 30
- ✓ The display shows the specified dryness level.
2. Press **Cupboard Dry** , **Cupboard Dry Plus**  or **Iron Dry** .

2. Press and hold **Cupboard Dry** , **Cupboard Dry Plus**  or **Iron Dry**  for approx. 3 seconds.
3. Press  or  to adjust the dryness level.
4. Press and hold the selected dryness level for approx. 3 seconds to return to the automatic programme.

8.2 Adjusting the dryness level

If the laundry feels too damp after it has been dried to a particular dryness level, you can adjust the dryness level.

Note: You can also adjust the dryness level in the basic settings.

1. Set an automatic programme.
→ "Automatic programmes",
Page 30
- ✓ The display shows the specified dryness level.

9 Programmes

You can dry your fabrics using either an automatic programme or a timed programme.

9.1 Automatic programmes



Automatic programmes are programmes in which humidity sensors measure the residual moisture in the laundry during the drying cycle. The programme only ends once the set dryness level is reached.

Each automatic programme has a dryness level → *Page 29*. The dryness level defines how dry or damp the laundry is after the programme ends.

Tips

- Select the dryness level according to the type of fabric or the desired drying result.
→ *"Dryness level", Page 29*
- The laundry's care labels provide you with additional information about programme selection.


Programme	Description	Max. load (kg)
Cottons	Dry hard-wearing, heat-resistant fabrics made of cotton or linen.	9.0
☐ Cottons Eco	Dry hard-wearing, heat-resistant fabrics made of cotton or linen. Energy-saving programme.	9.0
Easy Care	Dry items made of synthetic materials or blended fabrics.	3.5
Mixed Load	Dry items made of cotton and synthetics.	3.0
Bed linen	Dry duvet covers, pillowcases and sheets made of cotton. Note: The drum movement is optimised for drying large items of laundry.	3.5
Delicates	Dry delicate items made of satin, synthetics or blended fabrics.	2.0
Hygiene Plus	Dry hard-wearing, heat-resistant fabrics made of cotton or linen. Note: Particularly suitable for strict hygiene requirements.	4.0
Sportswear	Dry self-drying sportswear made of performance fibres, microfibres and synthetics.	1.5

Programme	Description	Max. load (kg)
Shirts	Suitable for shirts and blouses made of cotton, linen, synthetics or blended fabrics. Note: For optimal drying results, dry a maximum of 5 shirts or 5 blouses at the same time. Once the laundry is dry, iron it or hang it up. The residual moisture is then distributed evenly.	1.5
Towels	Dry hard-wearing, heat-resistant towels and dressing gowns made of cotton or linen.	6.0
Quiet Dry	Dry hard-wearing, heat-resistant fabrics made of cotton or linen. Suitable for quiet drying.	9.0
Iron Assist 	Reduce creasing and airborne odours. → <i>"Crease-removal function", Page 39</i> To adjust the programme with crease-removal function, press the corresponding button. → <i>"Buttons", Page 24</i>	-
 App	Select additional programmes directly via the Home Connect app. A description of the programmes can be found in the Home Connect app. Note: Your appliance must be connected to your home network and registered in your Home Connect app. → <i>"Home Connect ", Page 40</i>	-

9.2 Timed programmes

Timed programmes are programmes with a defined or adjustable programme duration. The programme ends once this time has elapsed, even if the laundry is still not dry, for example. Timed programmes are suitable for drying individual items of laundry or thin fabrics.

Tip: The laundry's care labels provide you with additional information about programme selection.

Programme	Description	Max. load (kg)
Timed Progr. Warm	Dry all types of fabric except for wool and silk. Suitable for pre-dried or slightly damp laundry and for drying off multi-layered, thick laundry.	3.0
 App	Select additional programmes directly via the Home Connect app. A description of the programmes can be found in the Home Connect app. Note: Your appliance must be connected to your home network and registered in your Home Connect app. → " <i>Home Connect</i> ", Page 40	–

10 Accessories

Use original accessories. These have been made especially for your appliance.

Note: Some accessories are available in other colours. Contact → "Customer Service", Page 56.

	Use	Order number
Connection kit	To save space, stack the appliance on a suitable washing machine of the same width and depth and that is from the same manufacturer.	WTZ27510
Connection kit with pull-out worktop	To save space, stack the appliance on a suitable washing machine of the same width and depth and that is from the same manufacturer. The pull-out worktop makes it easier to load and unload the appliance.	WTZ27500
Y-distributor	Connect the water drain hose of an additional appliance to the same siphon outlet.	15000490
Appliance care product	Spare part for the intensive appliance care function.	00311829
Platform	Install the appliance at a raised height so that it can be easily loaded and unloaded.	WTZPW20D

11 Laundry

11.1 Preparing the laundry

ATTENTION!

Objects remaining in the laundry may damage the laundry and the drum.

- ▶ Remove all items from any pockets in your laundry before using the appliance.

Note

The appliance and fabrics are protected when you prepare your laundry.

- Brush off sand and soil
- Sort the laundry according to colour and textiles and observe the care labels
- Close all zips, Velcro fasteners, hooks and eyes
- Remove curtain fittings and lead strips
- Load the laundry unfolded into the drum
- Spin the laundry before drying

12 Basic operation

12.1 Switching on the appliance

Note: If you switch the appliance on the first time after you have connected it to the electrical system, the switch-on process takes up to one minute.

Requirement: The appliance has been correctly installed and connected.

→ *"Installation and connection", Page 12*

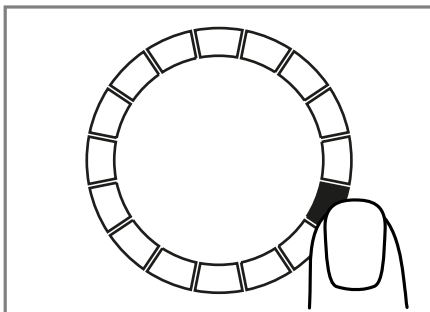
- ▶ Press .

The switch-on process takes a few seconds.

Note: The lighting for the drum goes out automatically.

12.2 Setting a programme

1. Press the required programme.
→ *"Programmes", Page 30*



- ✓ The display shows the programme settings.
2. If required, adjust the programme settings.
→ *"Adjusting the programme settings", Page 34*

12.3 Adjusting the programme settings

Depending on the programme and programme progress, you can adjust or activate/deactivate the settings.

Requirement: A programme is set.
→ *"Setting a programme", Page 34*

- ▶ Adjust the programme settings.
→ *"Buttons", Page 24*

Observe the information about operating logic → *Page 21*.

Note: The programme settings are not saved permanently for the programme.

12.4 Saving the programme settings

You can save your individual programme settings as favourites.

Requirements

- A programme is set.
→ *"Setting a programme", Page 34*
- The programme settings have been adjusted.
→ *"Adjusting the programme settings", Page 34*
- ▶ Press and hold **Favourite** for approx. 3 seconds.
Press **Favourite** to call up the saved programme.

Note: To overwrite the saved programme, repeat the steps above.

12.5 Loading laundry

Note: To prevent creasing, note the maximum load for the programmes.
→ *"Programmes", Page 30*

Requirements

- The laundry is prepared and sorted.
→ *"Laundry", Page 34*
- The drum is empty.

1. Open the door.
2. Place the laundry in the drum.
3. Close the door.
Ensure that there is no laundry trapped in the door.

12.6 Starting the programme

Requirement: A programme is set.
→ *"Setting a programme", Page 34*

- ▶ Press **||▷**.
- ✓ The display shows the programme duration or the programme end time.
- ✓ After the programme has ended, the display shows: "End" .

Note: If "Hot" appears, the appliance cools the laundry. When "Hot" goes out, the laundry has cooled down.

12.7 Adding laundry

After the programme starts, you can remove or add laundry at any time.

1. Press **||▷**.

The cooling process starts automatically after approximately 30 seconds and cools down the laundry while the drum is rotating. If you want to avoid or cancel the cooling process, open the door.
→ *"Display", Page 23*

2. Open the door.
3. Add or remove laundry.
4. Close the door.
5. Press **||▷**.

12.8 Cancelling the programme

1. Press **||▷**.
2. Open the door.
3. Remove the laundry.
→ *"Unloading the laundry", Page 35*

12.9 Unloading the laundry

1. Open the door.
2. Remove the laundry from the drum.

12.10 Put the appliance into standby mode

- ▶ Press **⏻**.

12.11 Fluff filter


During drying, fluff from the laundry is collected in the fluff filter. The fluff filter protects the appliance from fluff.

Cleaning the fluff filter

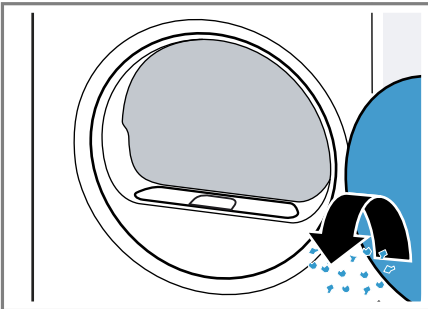
If the drying programme has finished or the display shows a notification while the appliance is in operation, clean the fluff filter.

Note: If you do not clean the appliance as described, the appliance's functionality may be impaired.

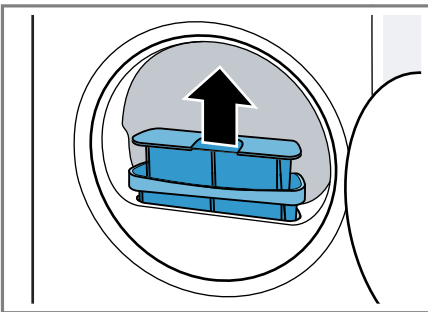
Requirements

- The display shows the following after drying: "End"
- or the display shows the following during operation: .

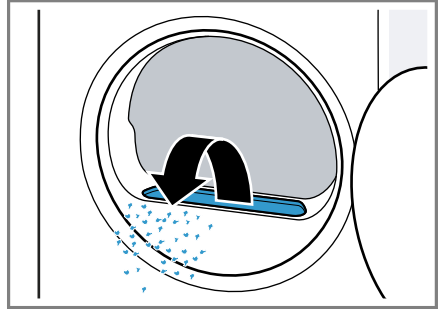
1. Open the door.
2. Remove the fluff from the door.



3. Remove the two-part fluff filter.

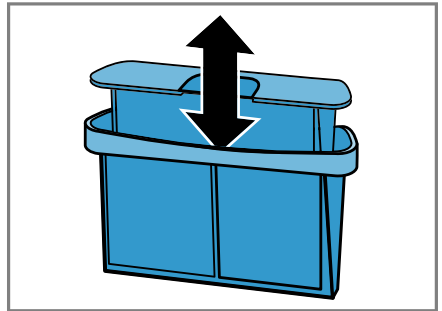


4. Remove the fluff from the recess.

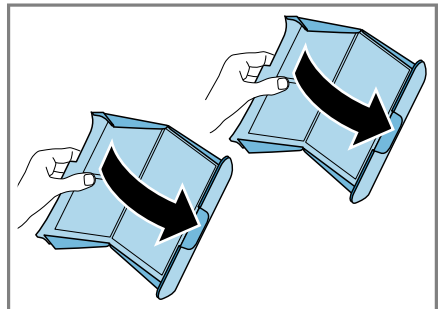


Ensure that no fluff falls into the air channel.

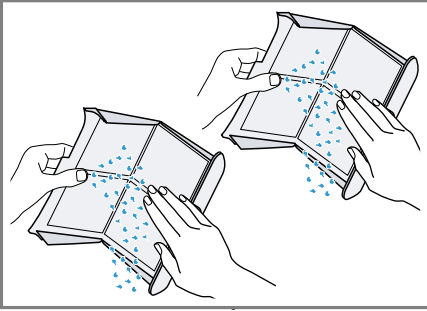
5. Disconnect the two-part fluff filter.



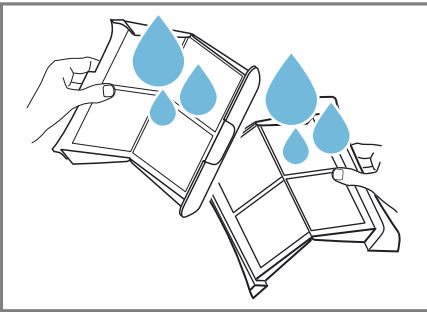
6. Open the two fluff filters.



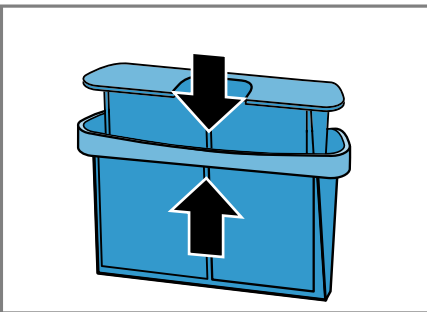
7. Remove the fluff.



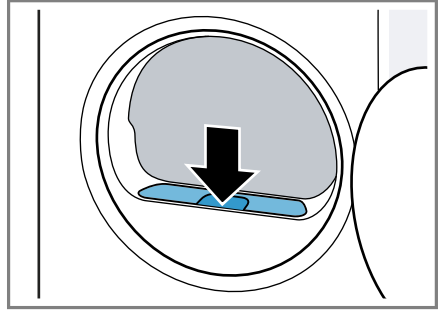
8. Clean the two fluff filters thoroughly under warm, running water and then dry them off.



9. Close the two fluff filters and put them together.



10. Insert the two-part fluff filter.



11. Close the door.

12.12 Condensation container

Condensation that forms in the appliance as it dries the laundry is collected by default in the condensation container.


Note: Operate this appliance using the water outlet hose provided.
→ "Connecting the water drain hose", Page 14

If you connect the water outlet hose, you do not have to regularly empty the condensation container.
→ "Emptying the condensation container", Page 37

Emptying the condensation container

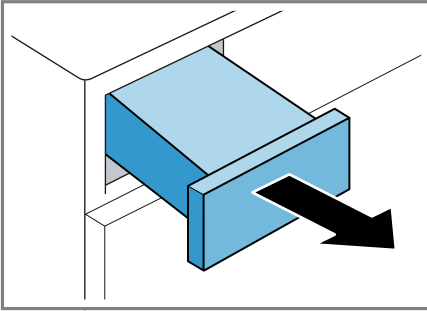
If the drying programme has finished or the display shows a notification while the appliance is in operation, empty the condensation container.

Requirements

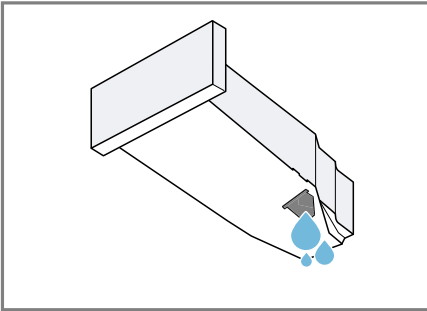
- The display shows the following after drying: "End"
- or the display shows the following during operation: .

en Childproof lock

1. Pull out the condensation container, keeping it level.



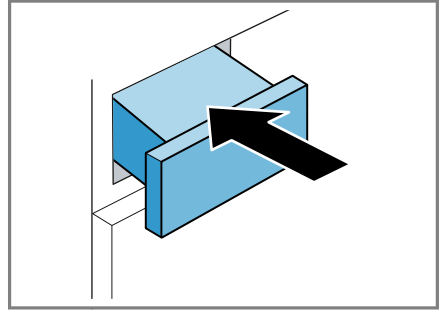
2. Empty the condensation container.



Check the condensation container filter → *Page 49* regularly and clean the filter if it is dirty. Make sure that you insert the condensation container before operating the appliance.
→ *"Inserting the condensation container", Page 38*

Inserting the condensation container


- ▶ Push the condensation container in as far as it will go.



13 Childproof lock


Secure your appliance against being operated unintentionally using the controls.

13.1 Activating the childproof lock

- ▶ Press and hold  **3 sec.** for approx. 3 seconds.
- ✓ The control elements are locked.
- ✓ The childproof lock also remains activated when the appliance is in standby mode and in the event of a power cut.

13.2 Deactivating the childproof lock

Requirement: To deactivate the childproof lock, the appliance must be switched on.

- ▶ Press and hold  **3 sec.** for approx. 3 seconds.

14 Crease-removal function

In order to reduce creasing and airborne odours, such as cigarette smoke, you can use a programme with a crease-removal function for any laundry that has not been worn for long.

14.1 Starting a programme with the crease-removal function


Note

Wash items of laundry that have traces of sweat, perfume or deodorant before wearing them again. Do not use dryer cleaning sets. Do not use a programme with the crease-removal function for the following fabrics:

- Wool, leather and viscose
- Fabrics with parts made from metal, wood or plastic
- Waxed jackets and oilskin jackets

Requirements

- The laundry is prepared.
→ *"Preparing the laundry"*, Page 34
 - The laundry is sorted.
 - The laundry is placed in the appliance.
→ *"Loading laundry"*, Page 35
1. Set a programme with crease-removal function.
→ *"Automatic programmes"*, Page 30
 2. If required, adjust the set programme with crease-removal function.
→ *"Buttons"*, Page 24
 3. Start the programme.
→ *"Starting the programme"*, Page 35

If the water tank is empty, the display shows:  .

→ *"Filling the water tank"*, Page 39

The average programme duration of the crease-removal function is approx. 45 minutes and may be longer or shorter depending on the ambient temperature.

- ✓ After the programme has ended, the display shows: "End" .

4. Remove the laundry.
→ *"Unloading the laundry"*, Page 35

The results of the crease-removal function may vary depending on the type of fabric, the amount of laundry and the selected programme.

Remove the laundry immediately after the programme has ended to prevent creasing.

5. Hang up the items of laundry and pull them into shape.

14.2 Filling the water tank

Your appliance removes the creases from rarely worn clothing using cold drinking water. If the display shows a notification while the appliance is in operation, fill the water tank.

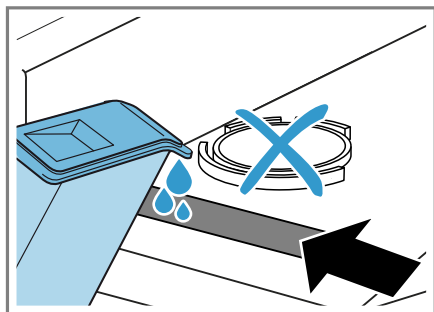
ATTENTION!

Operating the appliance with water that is dirty or too hot may result in damage to the appliance.

- ▶ Only fill the water tank with cold drinking water.
- ▶ Never use condensed water, distilled water, additives or descaler for the crease-removal function.

Requirements

- You have started a programme with the crease-removal function.
→ *"Starting a programme with the crease-removal function", Page 39*
 - The display shows: ☞.
 - The condensation container → *Page 37* is removed from the appliance.
1. Add approx. 180 ml cold mains water through the front opening, using the water jug provided.



Check the water tank filter regularly and clean the filter if it is dirty.
→ *"Cleaning the water tank filter", Page 48*

If ☞ does not go out on the display, add cold drinking water through the front opening and align the appliance correctly.
→ *"Aligning the appliance", Page 16*

- ✓ ☞ goes out on the display.
2. Insert the condensation container.
→ *"Inserting the condensation container", Page 38*
 3. Start the programme.
→ *"Starting a programme with the crease-removal function", Page 39*

15 Home Connect

This appliance is network-capable. Connecting your appliance to a mobile device lets you control its functions via the Home Connect app, adjust its basic settings and monitor its operating status.

The Home Connect services are not available in every country. The availability of the Home Connect function depends on the availability of Home Connect services in your country. You can find information about this at: www.home-connect.com.

The Home Connect app guides you through the entire login process. Follow the instructions in the Home Connect app to configure the settings.

Tips

- Please consult the documents supplied by Home Connect.
- Please also follow the instructions in the Home Connect app.

Notes

- Please note the safety precautions in this instruction manual and make sure that they are also observed when operating the appliance via the Home Connect app.
→ *"Safety", Page 4*
- Operating the appliance on the appliance itself always takes priority. During this time it is not possible to operate the appliance using the Home Connect app.


15.1 Setting up the Home Connect app

1. Install the Home Connect app on your mobile device.
2. Start the Home Connect app and set up access for Home Connect.

The Home Connect app guides you through the entire login process.

15.2 Setting up Home Connect


Requirements

- The Home Connect app has been installed on your mobile device.
 - Wi-Fi has been activated on the router.
 - The appliance is receiving signals from the WLAN home network (Wi-Fi) at its installation location.
1. Press and hold  **Remote Start** for approx. 3 seconds.
 2. Follow the instructions in the Home Connect app.


15.3 Home Connect menu

The Home Connect menu contains all of the Home Connect settings.


Calling up the Home Connect menu

- ▶ Press and hold  **Remote Start** for at least 3 seconds.
- ✓ The display shows the first setting of the Home Connect menu.

Navigating in the Home Connect menu


- ▶ Briefly press  **Remote Start** until the display shows the required setting.

Exiting the Home Connect menu

- ▶ Press and hold  **Remote Start** for at least 3 seconds.

15.4 Activating Wi-Fi on the appliance


Requirements

- The Home Connect menu is called up.
→ *"Calling up the Home Connect menu", Page 41*
- The display shows "oFF".
- ▶ Press  to change the setting.
- ✓ The display shows "on" if the Wi-Fi is activated.

Note: If the Wi-Fi is activated, the display alternately shows "on" and the signal strength of the Wi-Fi connection.


15.5 Deactivating Wi-Fi on the appliance

Requirements

- The Home Connect menu is called up.
→ *"Calling up the Home Connect menu", Page 41*
- The display shows "on".
- ▶ Press  to change the setting.
- ✓ The display shows "oFF" if the Wi-Fi is deactivated.

15.6 Resetting the appliance network settings

Requirements

- The Home Connect menu is called up.
→ *"Calling up the Home Connect menu", Page 41*
- The display shows "rES".
- ▶ Press and hold  for at least 3 seconds.
- ✓ The network settings are reset.

15.7 Remote start

Enable the appliance for remote start via the Home Connect app.

Note

Remote start is deactivated for safety reasons in the following circumstances:

- The appliance door is opened.
- **||▷** is pressed.
- **☐ Remote Start** is pressed.
- Following a power cut.

Activating remote start

Requirements

- The appliance is connected to your home WiFi network.
 - The appliance is connected to the Home Connect app.
 - A programme is selected.
 - The appliance door is closed.
 - The refresher tank is not empty.
- ▶ Press **☐ Remote Start** .
- ✓ **☐ Remote Start** lights up and the appliance is enabled for remote start via the Home Connect app.

Deactivating remote start

- ▶ Press **☐ Remote Start** .
- ✓ **☐ Remote Start** goes out.

15.8 Intelligent programme recommendation

After you have washed your laundry in the washing machine, the dryer will recommend a suitable programme for drying your laundry.

To determine the best drying programme to use, your appliances must transmit and receive information. Observe the following:

- The washing machine must be an appliance with the Home Connect function.

- The washing machine and dryer must be connected to your home network and registered in your Home Connect app.

Using the intelligent programme recommendation

1. Press **☐ SmartDry** .
 - ✓ The appliance detects a suitable programme. To cancel or change the programme recommendation, set a different programme or switch the appliance to standby mode.
 - ✓ If the appliance finds a suitable programme, the display for the programme lights up and the programme information is displayed.
 - ✓ If the appliance does not find a suitable programme, a signal sounds and the display shows "- -".
2. Press **||▷** .

Note

Why is my dryer unable to recommend a programme?

- No suitable drying programmes for the selected washing programme on the dryer.
- No data is available for the last washing programme used. The data is stored for 24 hours and then deleted.
- The washing programme has been cancelled. The washing programme must run through to the end for analysis to be possible.

15.9 Remote diagnostics

Customer Service can use Remote Diagnostics to access your appliance if you contact them, have your appliance connected to the Home Con-

nect server and if Remote Diagnostics is available in the country in which you are using the appliance.

Tip: For further information and details about the availability of Remote Diagnostics in your country, please visit the service/support section of your local website: www.home-connect.com.

15.10 Data protection

Please see the information on data protection.

The first time your appliance is registered on a home network connected to the Internet, your appliance will transmit the following types of data to the Home Connect server (initial registration):

- Unique appliance identification (consisting of appliance codes as well as the MAC address of the Wi-Fi communication module installed).
- Security certificate of the Wi-Fi communication module (to ensure a secure data connection).
- The current software and hardware version of your appliance.
- Status of any previous reset to factory settings.

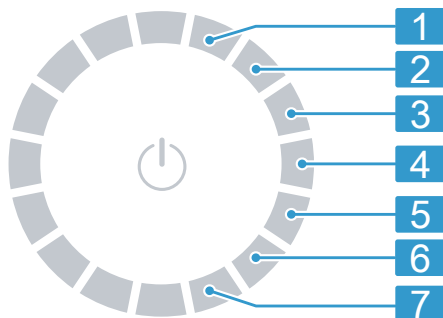
This initial registration prepares the Home Connect functions for use and is only required when you want to use the Home Connect functions for the first time.

Note: Please note that the Home Connect functions can only be utilised with the Home Connect app. Information on data protection can be retrieved in the Home Connect app.

16 Basic settings




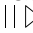

You can configure the basic settings for your appliance to meet your needs.

16.1 Overview of the basic settings



Position	Basic setting	Selection	Description
1	End signal	0 (off) 1 (quiet) 2 (medium) 3 (loud) 4 (very loud)	Set the volume of the signal at the end of the programme.
2	Button signal	0 (off) 1 (quiet) 2 (medium) 3 (loud) 4 (very loud)	Set the volume of the signal tone emitted when the buttons are pressed.
3	Display brightness	1 (low) 2 (medium) 3 (high) 4 (very high)	Set the display brightness.
4	Dryness level	0 1 2 3	Adjust the dryness level. → "Dryness level", Page 29
5	Appliance care	CP1 CP2	Start the appliance care programme. → "Appliance care", Page 45
6	Programme counter		Display the number of started programmes.
7	Factory settings	rES	Restore the appliance to the factory settings.

16.2 Changing the basic settings

- To call up the basic settings, press .
- Select the required basic setting.
→ "Overview of the basic settings", Page 44
- Adjust the basic setting:
 - To change the value, press  or .
 - To reset the appliance to the factory settings, press and hold  for approx. 3 seconds.
- Press  to save the settings.

17 Appliance care

The appliance offers cleaning programmes for basic and intensive appliance care.

17.1 Preparing for appliance care

Preparing the appliance for the appliance care programme

Prepare the appliance before running the appliance care programme.

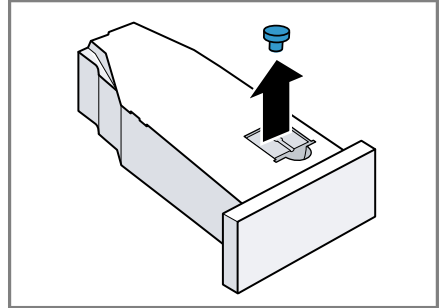
Requirements

- The drum is empty.
 - The appliance is in standby mode.
- Clean the fluff filter.
→ "Cleaning the fluff filter", Page 36
 - Pull out the condensation container horizontally and empty it.
→ "Emptying the condensation container", Page 37

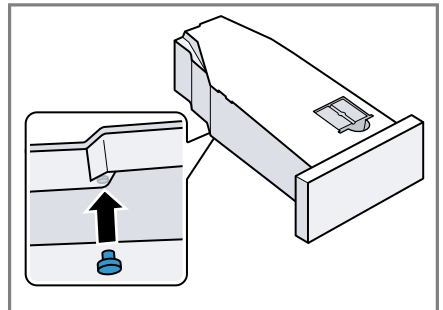
Preparing the condensation container for the appliance care programme

If you are draining the condensation water from the appliance using the drain hose, prepare the condensation container before running the appliance care programme.

- Remove the stopper from the recess in the top.



- Insert the stopper on the underside.



- Clean the filter in the condensation container.


17.2 Calling up the appliance care programme

Requirement: The appliance care programme is ready.

→ "Preparing for appliance care", Page 45

- Press .

The switch-on process takes a few seconds.

2. Press .
3. Set the programme to position 5.
- ✓ "CP1" and the programme duration alternate on the display.

17.3 Running the basic appliance care programme

To remove any dirt deposits in the appliance, you can run the basic appliance care programme.

Notes


- The basic appliance care programme runs for approximately 1 hour.
- After a lengthy period of use, the appliance reminds you to run the basic appliance care programme. Before the programme starts or after the programme has ended, the display shows the notification "CArE". This notification appears repeatedly until you have run the basic appliance care programme through to the end.

Requirements

- The appliance care programme is ready.
→ *"Preparing for appliance care", Page 45*
- The appliance care programme is now called up.
→ *"Calling up the appliance care programme", Page 45*

1. Pour approx. 1.5 litres of hot mains water into the condensation container.

Hold the filled condensation container level so that no liquid spills out.

2. Insert the condensation container so that it locks into place.
3. Press .

- ✓ The appliance care programme starts and a signal tone sounds.
- ✓ "End" appears on the display and a signal tone sounds once the appliance care programme has ended.
- 4. Pull out the condensation container horizontally and empty it.
→ *"Emptying the condensation container", Page 37*
- 5. If you are draining the condensation water using the drain hose:
 - Remove the stopper from the underside of the condensation container.
 - Insert the stopper into the recess on the top of the condensation container.
- 6. Insert the condensation container so that it locks into place.
- 7. Put the appliance into standby mode.
→ *"Put the appliance into standby mode", Page 35*

17.4 Running the intensive appliance care programme

You can run the intensive appliance care programme to remove any stubborn dirt deposits in the appliance and odours after a downtime of more than one month.

Notes

- The intensive appliance care programme runs for approximately 4 hours and must not be cancelled.
- When you run the intensive appliance care programme, you need the original appliance care product.
→ *"Accessories", Page 33*

WARNING **Risk of injury!**



The use of non-original spare parts and non-original accessories is dangerous.

- ▶ Only use the manufacturer's original spare parts and original accessories.

Starting the intensive appliance care programme


Requirements

- The appliance care programme is ready.
→ *"Preparing for appliance care", Page 45*
- The appliance care programme is now called up.
→ *"Calling up the appliance care programme", Page 45*

1. Press .
- ✓ "CP2" and the programme duration alternate on the display.
2. **ATTENTION!** The functionality of the appliance may be impaired if you use the wrong quantity of fabric softener, detergent, care product or cleaning agent.
 - ▶ Follow the dosage recommendations from the manufacturer.
Pour a bottle of the appliance care product and approx. 1.5 litres of hot mains water into the condensation container.
Hold the filled condensation container level so that no liquid spills out.
3. Insert the condensation container so that it locks into place.
4. Press .
- ✓ The appliance care programme starts and a signal tone sounds.

- ✓ After around 3 hours, the appliance pauses the appliance care programme and the remaining programme duration flashes on the display.
5. Pull out the condensation container horizontally and empty it.
6. Pour approx. 1.5 litres of hot mains water into the condensation container.
7. Carefully swing the condensation container horizontally and empty it to rinse out any remaining appliance care product.

Continuing the intensive appliance care programme

1. Pour approx. 1.5 litres of hot mains water into the condensation container.
Hold the filled condensation container level so that no liquid spills out.
2. Insert the condensation container so that it locks into place.
3. Press .
- ✓ The appliance care programme continues.
- ✓ "End" appears on the display and a signal tone sounds once the appliance care programme has ended.
4. Pull out the condensation container horizontally and empty it.
5. If you are draining the condensation water using the drain hose:
 - Remove the stopper from the underside of the condensation container.
 - Insert the stopper into the recess on the top of the condensation container.
6. Insert the condensation container so that it locks into place.

en Cleaning and servicing

- Put the appliance into standby mode.
→ "Put the appliance into standby mode", Page 35

18 Cleaning and servicing

To keep your appliance working efficiently for a long time, it is important to clean and maintain it carefully.

18.1 Tips on cleaning and care

Wipe down the housing and the controls with nothing but water and a damp cloth.	This ensures the parts of the appliance will remain clean and hygienic.
Remove all detergent residue, spray residue or other residues immediately.	Fresh deposits are easier to remove without leaving any residue.
Leave the appliance door open after use.	This allows the residual water to dry, reducing odours in the appliance.

18.2 Water tank filter

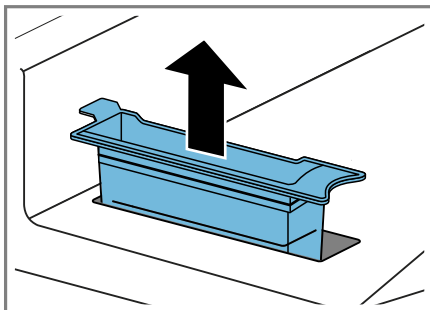
The filter in the water tank protects the appliance from dirt and contaminants.

Cleaning the water tank filter

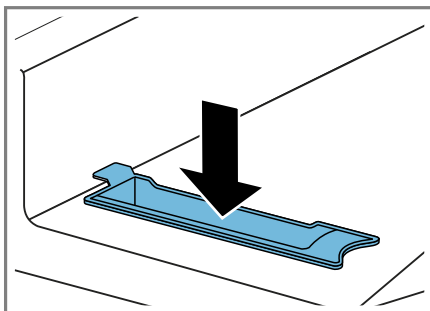
Check the filter regularly and clean the filter if it is dirty.

Requirement: The condensation container → Page 37 is removed from the appliance.

- Pull out the filter.



- Clean the filter under warm, running water or in the dishwasher.
- Fit the filter.



- Insert the condensation container
→ Page 38.

18.3 Moisture sensor

The moisture sensor in this appliance measures how damp the laundry is during the drying cycle. The appliance changes the duration of the automatic programme depending on the residual moisture in the laundry.

Cleaning the moisture sensor

Over time, residue from limescale, detergents and care products can build up on the moisture sensor. Clean the moisture sensor regularly.

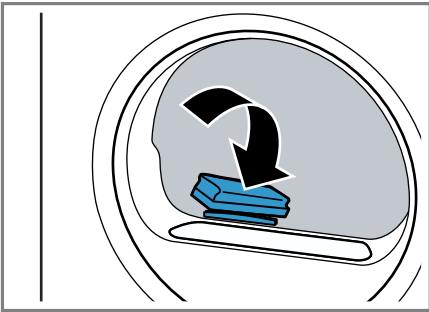
ATTENTION!

Hard or rough objects may damage the moisture sensor.

- ▶ Do not use hard or rough objects, abrasive cleaning products or steel wool for cleaning.

Note: If you do not clean the appliance as described, the appliance's functionality may be impaired.

1. Open the door.
2. Clean the moisture sensor with a sponge.



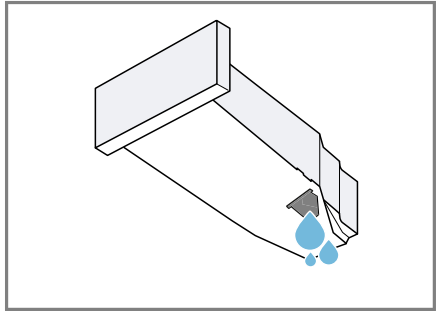
18.4 Condensation container filter

During drying, fluff from the laundry gets into the condensation. The filter in the condensation container protects the appliance from fluff.

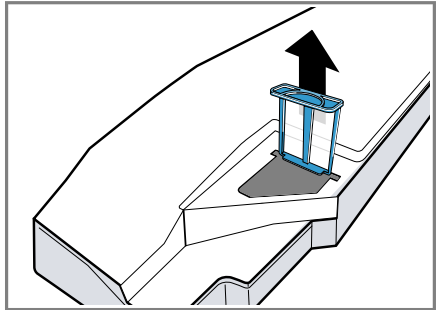
Clean the filter for the condensation tank.

The filter is cleaned automatically when the condensation container is emptied. Check the filter regularly and clean the filter if it is dirty.

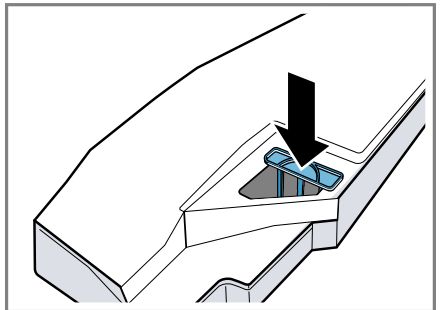
1. Empty the condensation container.
→ *"Emptying the condensation container", Page 37*



2. Remove the filter.



3. Clean the filter under warm, running water or in the dishwasher.
4. Slide in the filter as far as it will go.



5. Insert the condensation container.
→ *"Inserting the condensation container", Page 38*

19 Troubleshooting



You can rectify minor faults on your appliance yourself. Read the troubleshooting information before contacting after-sales service. This will avoid unnecessary costs.

WARNING

Risk of electric shock!


Incorrect repairs are dangerous.

- ▶ Repairs to the appliance should only be carried out by trained specialist staff.
- ▶ Only use genuine spare parts when repairing the appliance.
- ▶ If the power cord of this appliance is damaged, it must be replaced by the manufacturer, the manufacturer's Customer Service or a similarly qualified person in order to prevent any risk.

Fault	Cause and troubleshooting
"Hot" and the drum rotates.	Cooling process active. <ol style="list-style-type: none"> 1. Not a fault. 2. Do not change the programme during the cooling process. <p>Note: The cooling process takes up to 10 minutes. You can continue to operate the appliance.</p>
Humming noise.	Compressor active. <ul style="list-style-type: none"> ▶ Not a fault – normal operating noise.
The display goes out and  flashes.	Energy-saving mode is active <ul style="list-style-type: none"> ▶ Press any button. ✓ The display lights up again.
"CArE"	After a period of operation, the appliance automatically recommends that you run the basic appliance care programme. <ul style="list-style-type: none"> ▶ Running the basic appliance care programme on the appliance. → "Appliance care", Page 45
The crease-removal function takes too long.	A low ambient temperature extends the duration of the crease-removal function. <ul style="list-style-type: none"> ▶ Not a fault – no action required.
	Fluff filter is soiled. <ul style="list-style-type: none"> ▶ → "Cleaning the fluff filter", Page 36
The appliance is not working.	The mains plug of the power cord is not plugged in. <ul style="list-style-type: none"> ▶ Connect the appliance to the power supply. <hr/> The circuit breaker in the fuse box has tripped. <ul style="list-style-type: none"> ▶ Check the circuit breaker in the fuse box.

Fault	Cause and troubleshooting
The appliance is not working.	<p>There has been a power cut.</p> <ul style="list-style-type: none"> ▶ Check whether the lighting in your room or other appliances are working.
Appliance paused, but the drum is rotating.	<p>Cooling process active.</p> <ul style="list-style-type: none"> ▶ Not a fault – no action required.
Home Connect is not working properly.	<p>Different causes are possible.</p> <ul style="list-style-type: none"> ▶ Go to www.home-connect.com.
No connection to the home network.	<p>Wi-Fi is switched off.</p> <ul style="list-style-type: none"> ▶ Activating Wi-Fi on the appliance. → <i>"Activating Wi-Fi on the appliance", Page 41.</i> <hr/> <p>Wi-Fi is activated but a connection to your home network cannot be established.</p> <ol style="list-style-type: none"> 1. Ensure that the home network is available. 2. Reconnect the appliance to the home network. → <i>"Setting up Home Connect", Page 41</i>
Creasing.	<p>The load is too large.</p> <ul style="list-style-type: none"> ▶ Observe the maximum load capacity of the → <i>"Programmes", Page 30.</i> <hr/> <p>The laundry lies in the drum for too long after drying.</p> <ol style="list-style-type: none"> 1. Remove the laundry from the drum as soon as the drying programme has finished. 2. Spread the items of laundry for cooling. <hr/> <p>Unsuitable programme for the type of fabric.</p> <ul style="list-style-type: none"> ▶ Set the suitable programme for the type of fabric. → <i>"Programmes", Page 30</i> <hr/> <p>Easy-Care fabrics are dried for too long.</p> <ul style="list-style-type: none"> ▶ → <i>"Changing the dryness level", Page 29.</i> ▶ → <i>"Adjusting the dryness level", Page 29.</i> <hr/> <p>Anti-Crease not activated.</p> <ul style="list-style-type: none"> ▶ Activate the Anti-Crease function. → <i>"Buttons", Page 27</i>
☹ and programme terminated.	<p>Condensation tank filled.</p> <ol style="list-style-type: none"> 1. → <i>"Emptying the condensation container", Page 37.</i> 2. → <i>"Inserting the condensation container", Page 38.</i> 3. → <i>"Starting the programme", Page 35.</i> <hr/> <p>Water drain hose is caught or jammed.</p> <ol style="list-style-type: none"> 1. Ensure that the water drain hose is not kinked or trapped. 2. Route the water drain hose without kinks.

Fault	Cause and troubleshooting
☹️ and programme terminated.	Water drain hose is not connected correctly. <ul style="list-style-type: none"> ▶ Ensure that the water drain hose is connected correctly. → <i>"Connecting the water drain hose", Page 14</i>
	Water drain hose is blocked. <ul style="list-style-type: none"> ▶ Rinse the water drain hose with tap water.
	The filter for the condensation tank is soiled. <ul style="list-style-type: none"> ▶ → <i>"Clean the filter for the condensation tank.", Page 49.</i>
Condensation in the condensation tank even though the water drain hose is connected.	The remaining volume of condensation may remain in the condensation container. <ul style="list-style-type: none"> ▶ Not a fault – no action required. Water drain hose is not connected correctly. <ul style="list-style-type: none"> ▶ Ensure that the water drain hose is connected correctly. → <i>"Connecting the water drain hose", Page 14</i>
The programme does not start.	Childproof lock is activated. <ul style="list-style-type: none"> ▶ → <i>"Deactivating the childproof lock", Page 38</i> ▷ has not been pressed. <ul style="list-style-type: none"> ▶ Press ▷. No programme set. <ol style="list-style-type: none"> 1. → <i>"Setting a programme", Page 34.</i> 2. → <i>"Starting the programme", Page 35.</i>
The length of the programme changes during the drying cycle.	The programme operation is optimised electronically. This may change the programme duration. <ul style="list-style-type: none"> ▶ Not a fault – no action required.
Pumping noise.	Condensation pump active. <ul style="list-style-type: none"> ▶ Not a fault – normal operating noise.
Buzzing noise.	Compressor ventilation active. <ul style="list-style-type: none"> ▶ Not a fault – normal operating noise.
The drying time is too long.	Fluff filter is soiled. <ul style="list-style-type: none"> ▶ → <i>"Cleaning the fluff filter", Page 36</i> The ambient temperature is greater than 30 °C. <ul style="list-style-type: none"> ▶ Ensure that the ambient temperature is below 30 °C. The ambient temperature is lower than 15 °C. <ul style="list-style-type: none"> ▶ Ensure that the ambient temperature is above 15 °C.

Fault	Cause and troubleshooting
The drying time is too long.	Insufficient air circulation at the appliance's installation location. ▶ Ventilate the appliance's installation location.
	Insufficient condensation for the automatic self-cleaning when permanently using the crease-removal function.
	The appliance's ventilation opening is blocked. ▶ Ensure that the ventilation opening of the appliance is kept clear.
	Heat exchanger is soiled. ▶ Running the basic appliance care programme on the appliance. → <i>"Appliance care", Page 45</i>
Water is leaking from the appliance.	Appliance is not correctly aligned. ▶ → <i>"Aligning the appliance", Page 16</i>
	Water drain hose is not connected correctly. ▶ Ensure that the water drain hose is connected correctly. → <i>"Connecting the water drain hose", Page 14</i>
	The water tank for the crease-removal function is empty. ▶ Fill water tank. → <i>"Filling the water tank", Page 39.</i>
Water overflows when filling the water tank.	The water tank has been filled. Note: The overflowing water is harmless. ▶ Do not pour any more water into the water tank.
	The water tank filter is soiled. ▶ → <i>"Cleaning the water tank filter", Page 48.</i>
The laundry is too damp.	Unsuitable programme for the type of fabric. ▶ Set a timed programme for the subsequent drying. → <i>"Programmes", Page 30</i>
	There has been a power cut. ▶ Check whether the lighting in your room or other appliances are working.
	The load is too large. ▶ Observe the maximum load capacity of the → <i>"Programmes", Page 30.</i>
	After the end of the programme, warm laundry feels damper than it actually is.

Fault	Cause and troubleshooting
The laundry is too damp.	<ol style="list-style-type: none"> 1. Remove the laundry from the drum as soon as the drying programme has finished. 2. Spread the items of laundry for cooling.
	<p>Unsuitable dryness level set.</p> <ul style="list-style-type: none"> ▶ → <i>"Changing the dryness level", Page 29.</i>
	<p>Drying target not adjusted.</p> <ul style="list-style-type: none"> ▶ → <i>"Adjusting the dryness level", Page 29.</i>
	<p>Load too small.</p> <ul style="list-style-type: none"> ▶ Set a timed programme for the subsequent drying. → <i>"Programmes", Page 30</i>
	<p>Moisture sensor dirty.</p> <ul style="list-style-type: none"> ▶ → <i>"Cleaning the moisture sensor", Page 48.</i>
Odours have formed in the appliance.	<p>The drying process is interrupted and the condensation tank has been filled.</p> <ol style="list-style-type: none"> 1. → <i>"Emptying the condensation container", Page 37.</i> 2. → <i>"Inserting the condensation container", Page 38.</i> 3. → <i>"Starting the programme", Page 35.</i>
	<p>Stubborn dirt in the appliance or an extended appliance downtime of more than one month.</p> <ul style="list-style-type: none"> ▶ Run the intensive appliance care programme. → <i>"Appliance care", Page 45</i>

20 Transportation, storage and disposal

20.1 Preparing the appliance for transportation

ATTENTION!

If the appliance is operated immediately after transportation, the refrigerant contained in the appliance may result in damage to the appliance.

- ▶ Immediately after transporting the appliance, leave it to rest for two hours before putting it into operation.

Tip: The appliance may contain residual water, which may drip out of it when transported. The appliance should be transported upright.

Requirements

- The condensation container is emptied. Emptying the condensation container → *Page 37*
 - The appliance has been switched on.
→ *"Switching on the appliance", Page 34*
1. Set any programme → *Page 34*.
 2. Start the programme → *Page 35* and wait 5 minutes.
- ✓ The condensation is drained.
3. Put the appliance into standby mode.
→ *"Put the appliance into standby mode", Page 35*
 4. Remove the water drain hose from the connection point.
→ *"Water outlet connection types", Page 15*
 5. Secure the water drain hose on the appliance against unintentional loosening.

- Ensure that you do not bend the water drain hose.
- 6. Empty the condensation container
→ *Page 37*.
- 7. Insert the condensation container
→ *Page 38*.
- 8. Disconnect the appliance's mains plug from the power supply.
- ✓ The appliance is now ready to be transported.

20.2 Disposing of old appliance

Valuable raw materials can be re-used by recycling.

WARNING **Risk of harm to health!**

Children can lock themselves in the appliance, thereby putting their lives at risk.

- ▶ Do not install the appliance behind a door as this may obstruct the appliance door or prevent it from opening.
- ▶ With redundant appliances, unplug the power cord. Then cut through the cord and damage the lock on the appliance door beyond repair so that the appliance door will no longer close.

WARNING **Risk of fire!**

The refrigerant R290 used in this appliance is environmentally friendly. It is however flammable and may ignite if appliances are not disposed of properly.

- ▶ Dispose of the appliance properly.
 - ▶ Do not damage the tubing of the refrigerant circuit.
1. Unplug the appliance from the mains.
 2. Cut through the power cord.

3. Dispose of the appliance in an environmentally friendly manner.

Information about current disposal methods are available from your specialist dealer or local authority.



This appliance is labelled in accordance with European Directive 2012/19/EU concerning used electrical and electronic appliances (waste electrical and electronic equipment - WEEE). The guideline determines the framework for the return and recycling of used appliances as applicable throughout the EU.

21 Customer Service

Function-relevant genuine spare parts according to the corresponding Eco-design Order can be obtained from Customer Service for a period of at least 10 years from the date on which your appliance was placed on the market within the European Economic Area.

Note: Under the terms of the manufacturer's warranty the use of Customer Service is free of charge.

Detailed information on the warranty period and terms of warranty in your country is available from our after-sales service, your retailer or on our website.

If you contact Customer Service, you will require the product number (E-Nr.), the production number (FD) and the consecutive numbering (Z-Nr.) of your appliance.

The contact details for Customer Service can be found in the enclosed Customer Service directory or on our website.

21.1 Product number (E-Nr.), production number (FD) and consecutive numbering (Z-Nr.)


You can find the product number (E-Nr.), the production number (FD) and the consecutive numbering (Z-Nr.) on the appliance's rating plate.

Depending on the model, the rating plate is located:

- On the inside of the door.
- On the inside of the maintenance flap.
- On the rear of the appliance.

Make a note of your appliance's details and the Customer Service telephone number to find them again quickly.

22 Consumption values






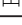
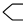
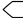



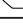

The  **Cottons Eco** programme (denoted by the arrow symbol) is suitable for drying cotton laundry with a normal dampness level, and is the most efficient programme for drying damp cotton laundry in terms of combined energy consumption.


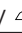

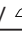


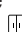
The consumption values for this programme that are declared on the energy label refer to a moisture content of the laundry of 60%.

The values specified for other programmes are indicative only and were determined in accordance with the applicable standard EN61121.

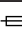
The actual values may deviate from the indicated values depending on the type of fabric, composition of laundry to be dried, residual moisture in the fabric, set degree of dryness, amount of laundry being loaded, environmental conditions and the activation of additional functions.

The expected programme duration/"Ready in" time that is shown on the appliance display when selecting the programme is based on the spin speed in the washing machine of 1000 rpm when the appliance is delivered.

Programme	Final moisture level (%)	Load (kg)	Spin speed (rpm)	Initial moisture level (%)	Programme duration (h:min)	Energy consumption (kWh/cycle)
Cottons + Cupboard Dry 	-1.5	9.0	1400	50	4:07	1.35
Cottons + Cupboard Dry 	-1.5	4.5	1400	50	2:57	0.89
Cottons + Cupboard Dry 	-1.5	9.0	1000	60	4:36	1.55
Cottons + Cupboard Dry 	-1.5	4.5	1000	60	3:13	0.98
Cottons + Cupboard Dry 	-1.5	9.0	800	70	5:05	1.75
Cottons + Cupboard Dry 	-1.5	4.5	800	70	3:29	1.08
 Cottons Eco	0.0	9.0	1400	50	3:49	1.24
 Cottons Eco	0.0	4.5	1400	50	2:18	0.70
 Cottons Eco	0.0	9.0	1000	60	4:20	1.44
 Cottons Eco	0.0	4.5	1000	60	2:36	0.80
 Cottons Eco	0.0	9.0	800	70	4:51	1.64
 Cottons Eco	0.0	4.5	800	70	2:54	0.90
Cottons + Iron Dry 	12.0	9.0	1400	50	2:38	0.81

Programme	Final moisture level (%)	Load (kg)	Spin speed (rpm)	Initial moisture level (%)	Programme duration (h:min)	Energy consumption (kWh/cycle)
Cottons + Iron Dry 	12.0	4.5	1400	50	1:40	0.48
Cottons + Iron Dry 	12.0	9.0	1000	60	3:08	1.01
Cottons + Iron Dry 	12.0	4.5	1000	60	1:56	0.58
Cottons + Iron Dry 	12.0	9.0	800	70	3:37	1.21
Cottons + Iron Dry 	12.0	4.5	800	70	2:13	0.68
Easy Care + Cup-board Dry 	2.0	3.5	800	40	1:19	0.37
Easy Care + Cup-board Dry 	2.0	3.5	600	50	1:34	0.45

23 Technical data

Appliance height	84.2 cm
Appliance width	59.8 cm
Appliance depth	61.3 cm
Appliance depth with door closed	66.2 cm
Appliance depth with door open	110.5 cm
Weight	54.7 kg
Maximum load	9.0 kg
Mains voltage	220-240 V, 50 Hz
 Minimum installation protection	10 A
Nominal power	600 W
Power consumption	<ul style="list-style-type: none"> ■ Standby mode: 0.30 W ■ Left-on mode: 0.30 W

Ambient temperature

- Minimum: 5 °C
- Maximum: 35 °C

Length of the power cord 179.5 cm

This product contains light sources from energy efficiency class F. These light sources are available as a spare part and must only be replaced by trained specialist staff.

You can find more information about your model online at <https://eprel.ec.europa.eu/>¹. This web address is linked to the official EU EPREL product database. Please then follow the instructions on searching for the model. The model identifier is made up of the characters before the slash in the product number (E-Nr.) on the rating plate. Alternatively, you can also find the model identifier in the first line of the EU energy label.

¹ Only applies to countries in the European Economic Area

24 Declaration of Conformity

BSH Hausgeräte GmbH hereby declares that the appliance with Home Connect functionality conforms to the essential requirements and other relevant provisions of Directive 2014/53/EU.

A detailed RED Declaration of Conformity can be found online at www.bosch-home.com among the additional documents on the product page for your appliance.




Hereby, BSH Hausgeräte GmbH declares that the appliance with Home Connect functionality is in compliance with relevant statutory requirements.¹

A detailed Declaration of Conformity can be found online at www.bosch-home.co.uk among the additional documents on the product page for your appliance.¹



2.4 GHz band (2400–2483.5 MHz):
Max. 100 mW
5-GHz band (5150–5350 MHz +
5470–5725 MHz): max. 150 mW

	BE	BG	CZ	DK	DE	EE	IE	EL	ES
	FR	HR	IT	CY	LI	LV	LT	LU	HU
	MT	NL	AT	PL	PT	RO	SI	SK	FI
	SE	NO	CH	TR	IS	UK (NI)			
5 GHz WLAN (Wi-Fi): For indoor use only.									
	AL	BA	MD	ME	MK	RS	UK	UA	
5 GHz WLAN (Wi-Fi): For indoor use only.									

¹ Only applies to Great Britain



Thank you for buying a Bosch Home Appliance!

Register your new device on MyBosch now and profit directly from:

- **Expert tips & tricks for your appliance**
- **Warranty extension options**
- **Discounts for accessories & spare-parts**
- **Digital manual and all appliance data at hand**
- **Easy access to Bosch Home Appliances Service**

Free and easy registration – also on mobile phones:

www.bosch-home.com/welcome



Looking for help? You'll find it here.

Expert advice for your Bosch home appliances, help with problems or a repair from Bosch experts.

Find out everything about the many ways Bosch can support you:

www.bosch-home.com/service

Contact data of all countries are listed in the attached service directory.

BSH Hausgeräte GmbH

Carl-Wery-Straße 34
81739 München, GERMANY
www.bosch-home.com

A Bosch Company



9001797390 (030901)

en

Valid within Great Britain:
Imported to Great Britain by
BSH Home Appliances Ltd.
Grand Union House
Old Wolverton Road
Wolverton, Milton Keynes
MK12 5PT
United Kingdom