



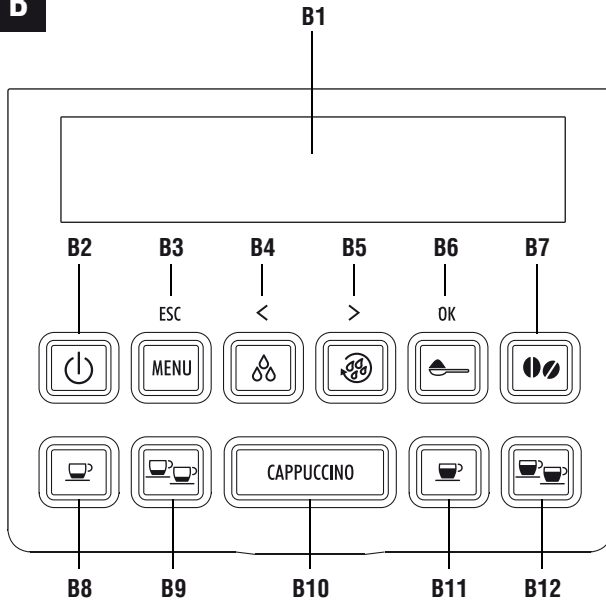
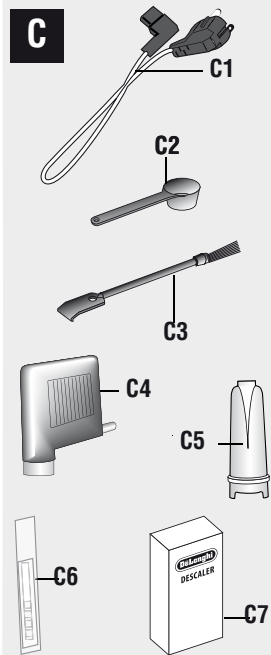
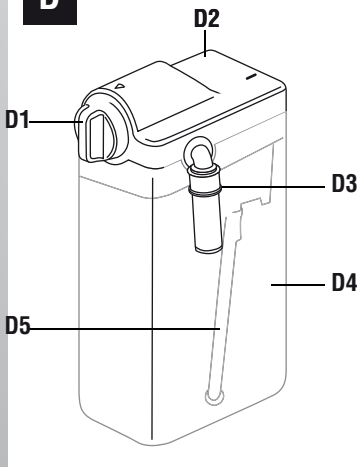
De'Longhi Appliances  
via Seitz, 47  
31100 Treviso Italia

# BEAN TO CUP ESPRESSO AND CAPPUCCINO MACHINE

Instruction for use



**ECAM22.360**

**B****C****D****Electrical connection (UK only)**

- A) If your appliance comes fitted with a plug, it will incorporate a 13 Amp fuse. If it does not fit your socket, the plug should be cut off from the mains lead, and an appropriate plug fitted, as below. **WARNING:** Very carefully dispose of the cut off plug after removing the fuse: do not insert in a 13 Amp socket elsewhere in the house as this could cause a shock hazard. With alternative plugs not incorporating a fuse, the circuit must be protected by a 15 Amp fuse. If the plug is a moulded-on type, the fuse cover must be re-fitted when changing the fuse using a 13 Amp Asta approved fuse to BS 1362. In the event of losing the fuse cover, the plug must NOT be used until a replacement fuse cover can be obtained from your nearest electrical dealer. The colour of the correct replacement fuse cover is that as marked on the base of the plug.
- B) If your appliance is not fitted with a plug, please follow the instructions provided below:


**WARNING - THIS APPLIANCE MUST BE EARTHED****IMPORTANT**

GREEN AND YELLOW  
BLUE  
BROWN

EARTH  
NEUTRAL  
LIVE



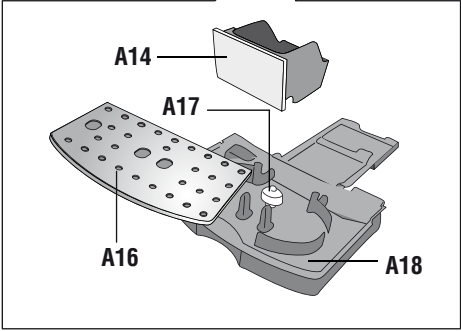
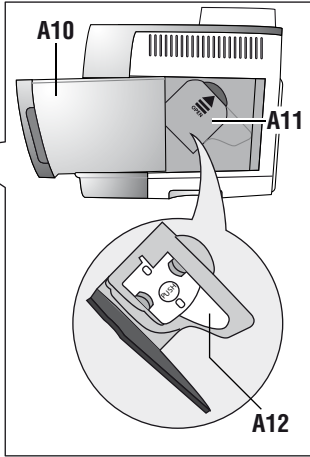
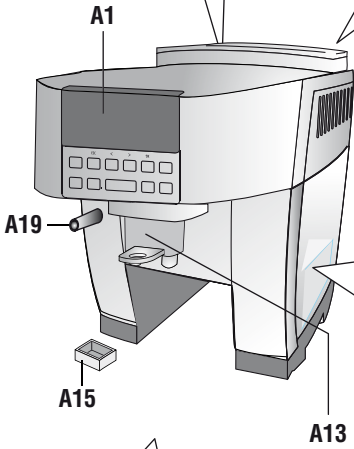
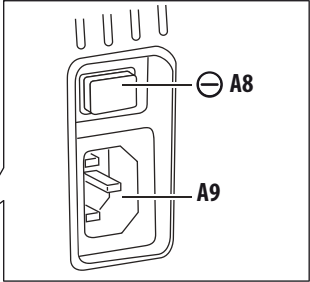
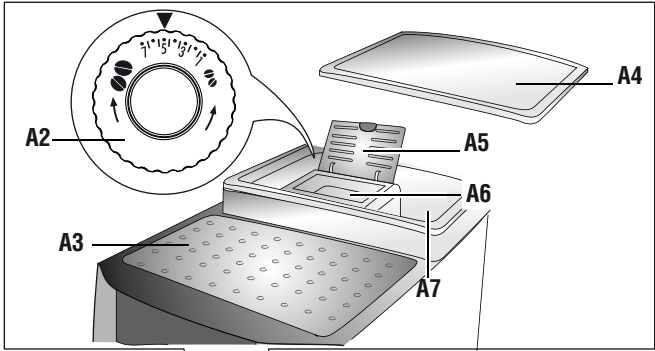
As the colours of the wires in the mains lead may not correspond with the coloured markings identifying the terminals in your plug, proceed as follows:

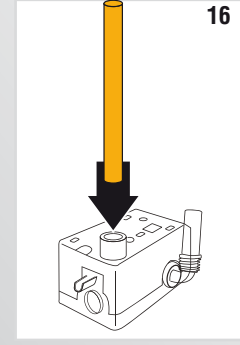
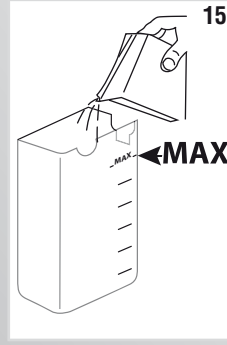
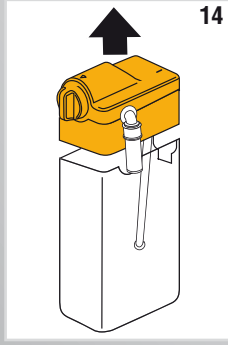
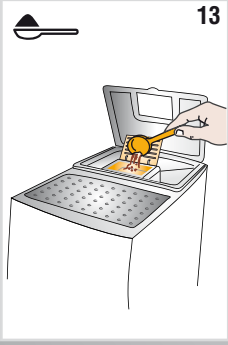
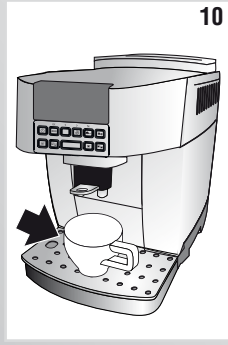
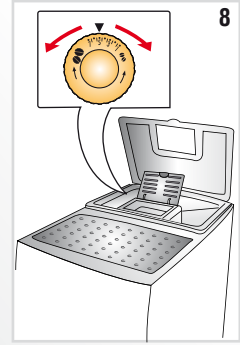
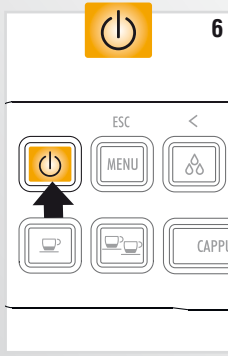
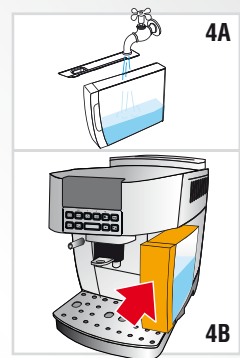
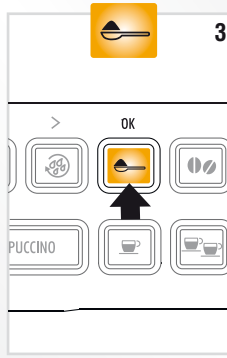
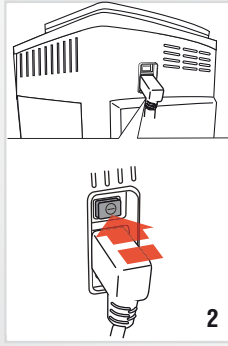
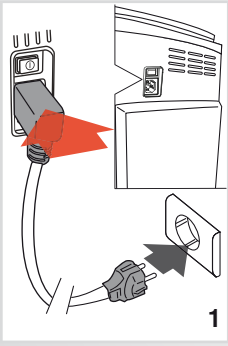
The green and yellow wire must be connected to the terminal in the plug marked with the letter E or the earth symbol  or coloured green or green and yellow.

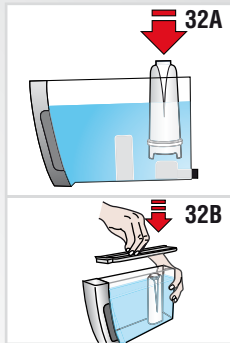
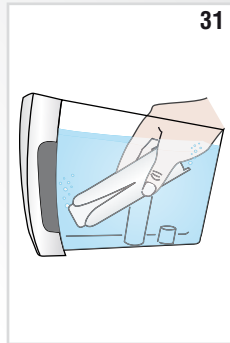
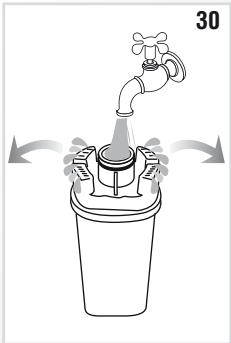
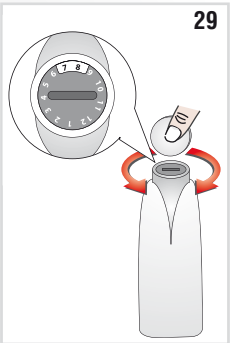
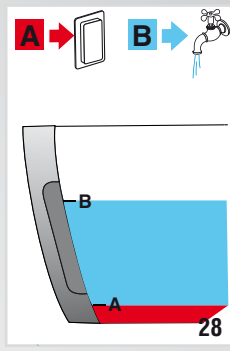
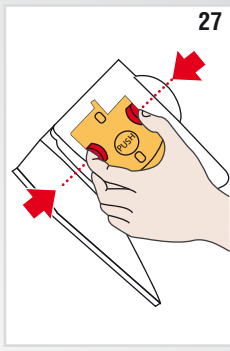
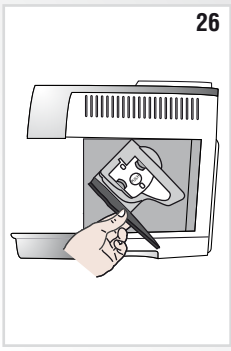
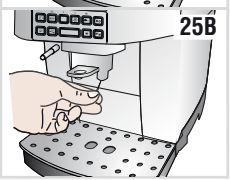
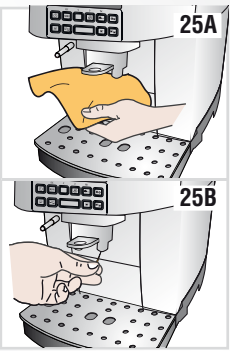
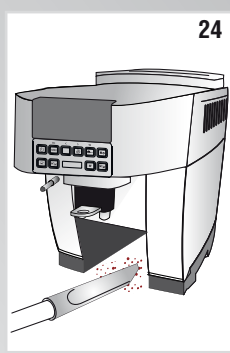
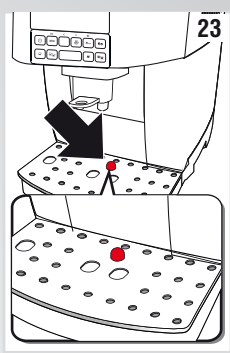
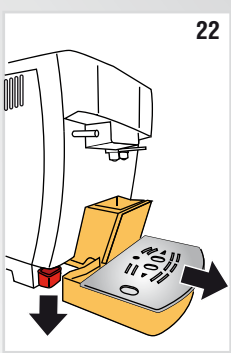
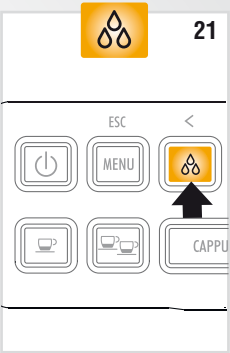
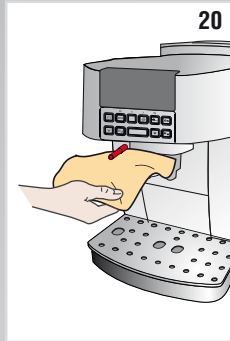
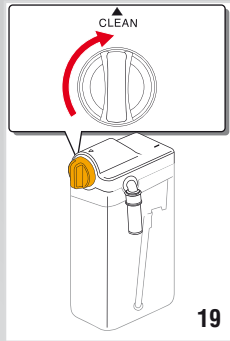
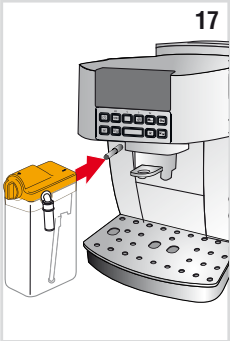
The blue wire must be connected to the terminal marked with the letter N or coloured black.

The brown wire must be connected to the terminal marked with the letter L or coloured red.

**A**







## CONTENTS

<b>INTRODUCTION</b> .....	<b>7</b>
Symbols used in this instruction .....	7
Letters in brackets .....	7
Troubleshooting and repairs .....	7
<b>SAFETY</b> .....	<b>7</b>
Fundamental safety warnings .....	7
<b>DESIGNATED USE</b> .....	<b>7</b>
<b>INSTRUCTION FOR USE</b> .....	<b>7</b>
<b>DESCRIPTION</b> .....	<b>8</b>
Description of the appliance .....	8
Description of control panel .....	8
Description of the accessories .....	8
Description of milk container .....	8
<b>BEFORE USE</b> .....	<b>8</b>
Checking the appliance .....	8
Installing the appliance .....	8
Connecting the appliance .....	8
Setting up the appliance .....	9
<b>TURNING THE APPLIANCE ON</b> .....	<b>9</b>
<b>TURNING THE APPLIANCE OFF</b> .....	<b>9</b>
<b>MENU SETTINGS</b> .....	<b>9</b>
Descaling .....	9
Adjust time .....	9
Auto-off .....	10
Auto-start .....	10
Setting the temperature .....	10
Energy saving .....	10
Setting water hardness .....	10
Setting the language .....	10
Install filter .....	10
Remove filter .....	10
Replace the filter .....	10
Default values (reset) .....	10
Statistics function .....	11
<b>MAKING COFFEE</b> .....	<b>11</b>
Selecting the coffee taste .....	11
Selecting the quantity of coffee in the cup .....	11
Adjusting the coffee mill .....	11
Tips for a hotter coffee .....	11
Making coffee using coffee beans .....	11
Making coffee using pre-ground coffee .....	12
<b>MAKING CAPPUCCINO AND MILK BASED DRINKS</b> .....	<b>12</b>
Filling and attaching the milk container .....	12
Adjusting the amount of froth .....	12
Making cappuccino .....	13
Making frothed milk only (without coffee) .....	13
Making milk only (without froth or coffee) .....	13
<b>CLEANING THE MILK CONTAINER AFTER USE</b> .....	<b>13</b>
Programming the quantity of coffee and milk in the cup for cappuccino or milk .....	13
<b>HOT WATER</b> .....	<b>13</b>
Changing the quantity of water delivered automatically .....	14
<b>CLEANING</b> .....	<b>14</b>
Cleaning the coffee grounds container .....	14
Cleaning the drip tray and condensate tray .....	14
Cleaning the inside of the coffee machine .....	14
Cleaning the water tank .....	14
Cleaning the coffee spouts .....	14
Cleaning the pre-ground coffee funnel .....	14
Cleaning the infuser .....	14
Cleaning the milk container .....	15
Cleaning the hot water/steam nozzle .....	15
<b>DESCALING</b> .....	<b>15</b>
<b>SETTING WATER HARDNESS</b> .....	<b>16</b>
Measuring water hardness .....	16
Setting water hardness .....	16
<b>WATER SOFTENER FILTER</b> .....	<b>16</b>
Installing the filter .....	16
Replacing the filter .....	17
Removing the filter .....	17
<b>TECHNICAL DATA</b> .....	<b>17</b>
<b>DISPOSAL</b> .....	<b>17</b>
<b>DISPLAYED MESSAGE</b> .....	<b>18</b>
<b>TROUBLESHOOTING</b> .....	<b>19</b>

## INTRODUCTION

Thank you for choosing the ECAM 22.360 bean to cup espresso and cappuccino machine.

We hope you enjoy using your new appliance.

Take a few minutes to read this instruction.

This will avoid all risks and damage to the appliance.

### Symbols used in this instruction

Important warnings are identified by these symbols.

It is vital to follow these warnings.



*Danger!*

Failure to observe the warning may result in life threatening injury by electric shock.



*Important!*

Failure to observe the warning could result in injury or damage to the appliance.



*Danger of burns!*

Failure to observe the warning could result in scalds or burns.



*Please note :*

This symbol identifies important advice or information for the user.

### Letters in brackets

The letters in brackets refer to the legend in the description of the appliance on page 2-3.

### Troubleshooting and repairs

In the event of problems, first try and resolve them following the information given in the sections "Displayed messages" on page 18 and "Troubleshooting" on page 19.

If this does not resolve the problem or you require further information, you should consult customer services by calling the number given on the annexed Customer Services sheet.

If your country is not among those listed on the sheet, call the number given in the guarantee leaflet.

If repairs are required, contact De'Longhi customer services only.

The addresses are given in the guarantee leaflet provided with the machine.

## SAFETY

### Fundamental safety warnings



*Danger!*

This is an electrical appliance and may cause electrical shocks.

You should therefore follow the safety warnings below:

- Never touch the appliance with damp hands or feet.

- Never touch the plug with damp hands.
- Make sure the socket used is freely accessible at all times, enabling the appliance to be unplugged when necessary.
- Unplug directly from the plug only. Never pull the power cable as you could damage it.
- To disconnect the appliance completely, release the main switch at the back of the appliance (fig. 2).
- If the appliance is faulty, do not attempt to repair. Turn it off, unplug from the mains socket and contact customer services.
- If the plug or power cable is damaged, it must be replaced by De'Longhi customer services only to avoid all risk.



*Important!*

- Keep all packaging (plastic bags, polystyrene foam) away from children.
- The appliance is not intended for use by persons (including children) with reduced physical, sensory or mental capabilities, or lack of experience and knowledge, unless they have been given supervision or instruction concerning use of the appliance by a person responsible for their safety. Children should be supervised to ensure that they do not play with the appliance.



*Danger : Risk of burns!*

This appliance produces hot water and steam may form while it is in operation.

Avoid contact with splashes of water or hot steam.

## DESIGNATED USE

This appliance is designed and made to prepare coffee and heat drinks.

All other use is considered improper.

This appliance is not suitable for commercial use.

The manufacturer is not liable for damage deriving from improper use of the appliance.

This is an household appliance only.

It is not intended to be used in:

- staff kitchen areas in shops, offices and other working environments;
- farm houses
- by clients in hotels, motels and other residential type environments
- bed and breakfast type environments.

## INSTRUCTION FOR USE

Read this instruction carefully before using the appliance.-

Failure to follow this instruction may result in burns or damage to the appliance.

The manufacturer is not liable for damage deriving from failure to follow this instruction.





*Please note :*

Keep this instruction.

If the appliance is passed to other persons, they must also be provided with this instruction.

## DESCRIPTION

### Description of the appliance









(page 3 - A )

- A1. Control panel
- A2. Grinding adjustment dial
- A3. Cup shelf
- A4. Beans container lid
- A5. Pre-ground coffee funnel lid
- A6. Pre-ground coffee funnel
- A7. Beans container
- A8. Main switch
- A9. Socket for power cable connector
- A10. Water tank
- A11. Infuser door
- A12. Infuser
- A13. Coffee spout (adjustable height)
- A14. Coffee grounds container
- A15. Condensate tray
- A16. Cup tray
- A17. Drip tray water level indicator
- A18. Drip tray
- A19. Hot water and steam connection nozzle

### Description of control panel


(page 2 - B )

*A number of buttons on the panel have a double function. This is indicated in brackets in the description.*

- B1. Display: guides the user in using the appliance.
- B2.  button: turns the appliance on and off.
- B3.  **MENU** button to access the menu. *(When in the settings MENU, it acts as the "ESC" button to exit from the selected function and go back to the main menu).*
- B4.  button: to deliver steam to make cappuccino and milk-based drinks.  
*(When in the settings MENU this button functions as a < button to go scroll back).*
- B5.  button: to perform a rinse cycle.  
*(When in the settings MENU this button functions as a > button to scroll forward).*
- B6.  button : to make coffee using pre-ground coffee.  
*(When in the settings MENU this button functions as an OK button to confirm the selection made).*
- B7.  aroma selection button: press to select coffee taste.
- B8.  button : to make 1 cup of short espresso coffee.
- B9.  button : to make 2 cups of short espresso coffee.

B10. **CAPPUCCINO** button: to prepare 1 cup of cappuccino or frothed milk.

B11.  button : to make 1 cup of long espresso coffee.

B12.  button : to make 2 cups of long espresso coffee.

### Description of the accessories

(page 2 - C )

- C1. Power cable
- C2. Measure
- C3. Cleaning brush
- C4. Hot water spout
- C5. Water softener filter (certain models only)
- C6. "Total Hardness Test" indicator paper
- C7. Descaler

### Description of milk container

(page 3 - D )

- D1. Froth adjustment dial
- D2. Milk container lid
- D3. Frothed milk spout (adjustable)
- D4. Milk container
- D5. Milk intake tube

## BEFORE USE

### Checking the appliance

After removing the packaging, make sure the product is complete and undamaged and that all accessories are present.

Do not use the appliance if it is visibly damaged.

Contact De'Longhi Customer Services.

### Installing the appliance



**Important!**

When you install the appliance, you should follow the safety warnings below:

- The appliance gives off heat. After positioning the appliance on the worktop, leave a space of at least 3 cm between the surfaces of the appliance and the side and rear walls and at least 15 cm above the coffee machine.
- Water penetrating the appliance could cause damage. Do not place the appliance near taps or sinks.
- The appliance could be damaged if the water it contains freezes. Do not install the appliance in a room where the temperature could drop below freezing point.
- Arrange the power cable in such a way that it cannot be damaged by sharp edges or contact with hot surfaces (e.g. electric hot plates).

### Connecting the appliance



**Important!**

Check that the mains power supply voltage corresponds to that indicated on the rating plate on the bottom of the appliance.


Connect the appliance to an efficiently earthed and correctly installed socket with a minimum current rating of 10A only. If the power socket does not match the plug on the appliance, have the socket replaced with a suitable type by a qualified professional.

## Setting up the appliance


 *Please note :*

- Coffee has been used to factory test the appliance and it is therefore completely normal for there to be traces of coffee in the mill. The machine is, however, guaranteed to be new.
  - You should customise water hardness as soon as possible following the instructions in the section "Setting water hardness" on page 16.
1. Insert the power cable connector into the socket at the back of the appliance and connect the appliance to the mains electricity supply (fig. 1). Make sure the main switch at the back of the appliance is pressed (fig. 2).

You must first choose the language (the languages scroll through at intervals of about 3 seconds):

2. When English appears, press the  button (fig. 3) for a few seconds until "ENGLISH set" is displayed.

Follow the instructions indicated on the appliance display:

3. "FILL TANK": remove the water tank, fill to the MAX line with fresh water (fig. 4A), then replace in the appliance (fig. 4B).
4. "INSERT WATER SPOUT": Check that the hot water spout is inserted on the nozzle and place a container holding a minimum of 100 ml underneath (fig. 5).
5. "HOT WATER Confirm?" appears on the display.
6. Press the  button to confirm. The appliance delivers water from the spout then goes off automatically.

The coffee machine is now ready for normal use.

 *Please note :*

- When setting up the appliance, you need to make 4/5 cups of coffee or 4/5 cappuccinos before the appliance starts to give satisfactory results.

## TURNING THE APPLIANCE ON


 *Please note :*

Before turning the appliance on, make sure the main switch on the back of the appliance is pressed (fig. 2).

Each time the appliance is turned on, it performs an automatic preheat and rinse cycle which cannot be interrupted. The appliance is ready for use only after completion of this cycle.

 *Danger of burns!*

During rinsing, a little hot water comes out of the coffee spouts and is collected in the drip tray underneath. Avoid contact with splashes of water.


- To turn the appliance on, press the  button (fig. 6). The message "Heating up Please wait" is displayed. After heating, the message "Rinsing" is displayed. As well as heating the boiler, the appliance also heats the internal circuits by circulating hot water. The appliance is at temperature when the message "READY" is displayed and the taste has been selected.

## TURNING THE APPLIANCE OFF

Each time the appliance is turned off, it performs an automatic rinse cycle which cannot be interrupted.


 *Danger of burns!*

During rinsing, a little hot water flows from the coffee spouts. Avoid contact with splashes of water.

To turn the appliance off, press the  button (fig. 6). The appliance performs a rinse cycle then goes off (stand-by).

 *Please note:*

If you will not be using the appliance for some time, unplug from the mains socket:

- first turn the appliance off by pressing the  button (fig. 6);
- press the main switch (fig. 2).

 *Important!*

Never press the main switch while the appliance is on.

## MENU SETTINGS










Press the **MENU** button to enter the settings menu.

### Descaling

For instructions on descaling, see page 15.

### Adjust time




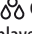


To adjust the time on the display, proceed as follows:

1. Press the **MENU** button to enter the menu;
2. Press the  or  button until "Adjust time" is displayed;
3. Press the  button;
4. Press the  or  button to change the hour;
5. Press the  button to confirm;
6. Press the  or  button to change the minutes;
7. Press the  button to confirm.

The time is set: press **MENU** to exit menu.

## Auto-off

Auto-off can be set so that the appliance goes off after 15 or 30 minutes, or after 1, 2 or 3 hours.

1. Press the **MENU** button to enter the menu;
2. Press the  or  button until "Auto-off" is displayed;
3. Press the  button;
4. Press the  or  until the number of hours of operation is displayed (15 or 30 minutes, or 1, 2 or 3 hours);
5. Press the  button to confirm.

The auto-off is set. Press **MENU** to exit menu.











## Auto-start


You can set the auto-start time in order to have the appliance ready at a certain time (for example in the morning) so you can make coffee immediately.





*Please note :*


To enable this function, the time must already be set correctly.

1. Press the **MENU** button to enter the menu;
2. Press the  or  button until "Auto-start" is displayed;
3. Press the  button. "Enable?" is displayed;
4. Press the  button to confirm;
5. Press the  or  button to choose the hour;
6. Press the  button to confirm;
7. Press the  or  button to change the minutes;
8. Press the  button to confirm;
9. Then press **MENU** to exit menu.

Once the time has been confirmed, activation of auto-start is indicated by the  symbol displayed alongside the time and under "Auto-start" in the menu.


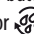




To disable the function:

1. Select auto-start from the menu;
2. Press the  button. "Disable?" is displayed;
3. Press the  button to confirm.

The  symbol is no longer displayed.

## Setting the temperature

If you want to modify the temperature of the water used to make the coffee (low, medium, high, maximum), proceed as follows:

1. Press the **MENU** button to enter the menu;
2. Press the  or  button until "Set temperature" is displayed;
3. Press the  button;
4. Press the  or  button until the required temperature is displayed (low, medium, high, maximum);
5. Press the  button to confirm.





The temperature is set. Press **MENU** to exit menu.

## Energy saving

Use this function to enable or disable energy saving.

When enabled, the function reduces energy consumption in compliance with European regulations.

When energy saving mode is active, an asterisk appears below "Energy saving" in the menu.

1. Press the **MENU** button to enter the menu;
2. Press the  or  button until "Energy saving" is displayed;
3. Press the  button. "Enable?" or "Disable?" is displayed;
4. Press the  button to enable or disable energy saving mode;

Then press **MENU** to exit menu.

When the function is active, if the machine is not used for about 1 minute, "Energy saving" is displayed.



*Please note :*






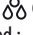
When in energy saving mode, a few seconds may elapse before the first coffee is delivered as the appliance must heat up again.

## Setting water hardness

For instructions on setting water hardness, see page 16.

## Setting the language

To modify the language on the display, proceed as follows:

1. Press the **MENU** button to enter the menu;
2. Press the  or  button until "Set language" is displayed;
3. Press the  button;
4. Press the  or  button until the required language is displayed ;
5. Press the  button to confirm;

The language is set. Press **MENU** to exit menu.

## Install filter

For instructions on how to install the filter, see the section "Installing the filter" (page 16).

## Remove filter

For instructions on how to remove the filter, see the section "Installing the filter" (page 16).





## Replace the filter

For instructions on how to replace the filter, see the section "Replacing the filter" (page 17).

## Default values (reset)







This resets all menu settings and programmed quantities back to the default values (with the exception of the language

which remains as set).

1. Press the **MENU** button to enter the menu;
2. Press the  or  button until "Default values" is displayed;
3. Press the  button;
4. The message "Confirm?" is now displayed.
5. Press the  button to confirm and exit.

### Statistics function

This displays statistics relating to the machine. To display, proceed as follows:

1. Press the **MENU** button to enter the menu;
2. Press the  or  button until "Statistics" is displayed;
3. Press the  button;
4. By pressing the  or  button you can check:
  - how many coffees have been made;
  - how many times the machine has been descaled;
  - the total number of litres of water delivered;
  - how many times the water filter has been replaced;
  - how many cappuccinos and milk based drinks have been made (CAPPUCCINO).
5. Press then the  button twice to exit the menu.

## MAKING COFFEE

### Selecting the coffee taste

The appliance is set by default to make coffee with a standard taste.



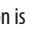

You can also choose one of these tastes:

- Extra-mild taste
- Mild taste
- Standard taste
- Strong taste
- Extra-strong taste

To change the taste, press the  button (fig. 7) repeatedly until the required taste is displayed.

### Selecting the quantity of coffee in the cup

The appliance is set by default to automatically deliver the following quantities of coffee:

- short coffee ( $\approx 40$ ml) when the  button is pressed;
- long coffee ( $\approx 120$ ml) when the  button is pressed;
- two short coffees when the  button is pressed;
- two long coffees when the  button is pressed.

To change the quantity of coffee the appliance delivers automatically into the cup, proceed as described below:

- press and hold the button corresponding to the quantity to be modified until "Program quantity" is displayed, then

release the button;

- when the coffee in the cup reaches the required level, press the same button again to memorise the new amount.

The machine is now reprogrammed with the new quantities.

### Adjusting the coffee mill

The coffee mill is set by default to prepare coffee correctly and should not require regulating initially.

However, if after making the first few coffees you find that the coffee is either too weak and not creamy enough or delivery is too slow (in drops), this can be corrected by adjusting the grinding adjustment dial (fig. 8).

 Please note :

The grinding adjustment dial must only be turned when the coffee mill is in operation.



If the coffee is delivered too slowly or not at all, turn one click clockwise.


For fuller bodied creamier coffee, turn one click anticlockwise (do not turn more than one click at a time otherwise the coffee could be delivered in drops).

These adjustments will only be evident after at least 2 cups of coffee have been delivered.

If this adjustment does not obtain the desired result, turn the dial another click.

### Tips for a hotter coffee

For hotter coffee, you should:

- before delivering the coffee, perform a rinse cycle by pressing the  button. Hot water is delivered from the spout, heating the internal circuits of the appliance and thus raising the coffee temperature.
- warm the cups by rinsing them with hot water (using the hot water function);
- increase the coffee temperature in the settings menu (page 10).

### Making coffee using coffee beans

 Important!

Do not use caramelised or candied coffee beans as they could stick to the coffee mill and damage it.

1. Fill the container with coffee beans (fig. 9).
2. Place under the coffee spouts:
  - 1 cup, if you want 1 coffee (fig. 10);
  - 2 cups, if you want 2 coffees (fig. 11).
3. Lower the spouts as near as possible to the cup. This makes a creamier coffee (fig. 12).
4. Press the button corresponding to the required coffee.



- Preparation begins and information on the coffee selected is displayed.

Once the coffee has been made, the appliance is ready to be used again.

**i** Please note :

- while the machine is making coffee, delivery can be interrupted at any moment by pressing one of the coffee buttons.
- At the end of delivery, to increase the quantity of coffee in the cup, within 3 seconds, press and hold one of the coffee buttons.

**i** Please note :

For hotter coffee, see the section **“Tips for a hotter coffee”**.

**!** Important!

- If the coffee is delivered in drops, too weak and not creamy enough or too cold, read the tips in the **“Troubleshooting”** section on page 19.
- Various alarm messages could be displayed while using the machine. Their meaning is explained in the section **“Displayed messages”** (page 18).

### Making coffee using pre-ground coffee


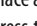

**!** Important!

- Never place coffee beans in the pre-ground coffee funnel as this could damage the appliance.
- Never add pre-ground coffee when the machine is off or it could spread through the inside of the machine and dirty it. This could damage the appliance.
- Never use more than one level measure as it could dirty the inside of the machine or block the funnel.



**i** Please note :

When you use pre-ground coffee, you can only make one cup of coffee at a time.

- Make sure the appliance is on.
- Press the  button.
- Make sure the funnel is not blocked, then add one level measure of pre-ground coffee (fig. 13).
- Place a cup under the coffee spouts.
- Press the corresponding one cup coffee button (  or  ).

- Preparation begins.

## MAKING CAPPUCCINO AND MILK BASED DRINKS

**i** Please note!

- To avoid producing milk with poor froth or large bubbles, always clean the milk container lid and hot water nozzle as described in the section **“Cleaning the milk container”** on pages 13 and 15.

### Filling and attaching the milk container




- Remove the lid (fig. 14);
- Fill the milk container with a sufficient quantity of milk, not exceeding the MAX level marked on the handle (fig. 15). Each mark on the side of the container corresponds to 100 ml of milk.

**i** Please note!

- For a denser more even froth, you must use skimmed or partially skimmed milk at refrigerator temperature (about 5°C).
  - If **“Energy saving”** mode is enabled, you may have to wait a few seconds before the drink is delivered.
- Make sure the milk intake tube is correctly inserted in the bottom of the milk container lid (fig. 16).
  - Place the lid back on the milk container.
  - Remove the hot water spout from the nozzle.
  - Attach the container to the nozzle, pushing as far as it will go (fig. 17).
  - Place a sufficiently large cup under the coffee spouts and the frothed milk spout. Adjust the length of the milk spout. To move it nearer the cup, simply pull it downwards (fig. 18).
  - Follow the instructions below for each function.

### Adjusting the amount of froth

Turn the froth adjustment dial on the milk container lid to adjust the amount of froth on the milk delivered while making cappuccinos and milk-based drinks.

Dial position	Description	Recommended for...
	No froth	caffelatte/hot milk (without froth)
	Min. froth	Macchiato
	Max. froth	CAPPUCCINO/FROTHED MILK

## Making cappuccino

1. Fill the milk container and attach it as described above.
2. Turn the froth adjustment dial on the milk container lid to the position corresponding to the required froth.
3. Press the CAPPUCCINO button. "CAPPUCCINO" is displayed, together with a progress bar which fills gradually as preparation proceeds.
4. After a few seconds, frothed milk is delivered from the milk spout into the cup below. For drinks with coffee, the machine automatically makes the coffee after delivering the milk.



Please note!

- If during delivery you want to stop making milk or coffee, press the CAPPUCCINO button twice.
- At the end of delivery, to increase the quantity of milk or coffee in the cup, within 3 seconds, press and hold the CAPPUCCINO button.
- Do not leave the milk container out of the refrigerator for long periods. The warmer the milk (5°C is ideal), the poorer the quality of froth produced.

## Making frothed milk only (without coffee)


Proceed as described in the previous paragraph (Making cappuccino or macchiato), pressing the CAPPUCCINO button twice instead of once.



Please note!

If during delivery you want to stop making milk or coffee, press the CAPPUCCINO button once.

## Making milk only (without froth or coffee)

Proceed as described in the previous paragraph (Making frothed milk only), turning the froth regulator to  position.

## CLEANING THE MILK CONTAINER AFTER USE



Important! Danger of burns

When cleaning the internal tubes of the milk container, a little hot water and steam leak out of the frothed milk spout. Avoid contact with splashes of water.

After preparing a cappuccino or milk based drink, the machine must be cleaned to remove the milk residues. Proceed as follows:

1. Leave the milk container in the machine (you do not need to empty it);
2. Place a cup or other recipient under the frothed milk spout.
3. Turn the froth adjustment dial to CLEAN (fig. 33): the op-

eration is shown on the display (fig. 34) and stops automatically.

4. Turn the dial back to one of the froth selections.
5. Remove the milk container and always clean the steam nozzle with a sponge (fig. 20).



Please note!

- To prepare a number of cappuccinos and milk based drinks, clean the milk container after you have prepared the last drink only.
- The milk container can be kept in the refrigerator.
- In some cases, to clean you must wait for the appliance to heat up.

## Programming the quantity of coffee and milk in the cup for cappuccino or milk

The appliance is set by default to automatically deliver standard quantities. To change these quantities, proceed as follows:

1. Place a cup under the coffee spouts and milk spout.
2. Press and hold the CAPPUCCINO button until the message "PROGRAM MILK Program quantity" is displayed.
3. Release the button. The appliance starts delivering milk.
4. Once the required quantity of milk has been delivered into the cup, press the CAPPUCCINO button again.
5. The appliance stops delivering milk and after a few seconds the coffee is delivered into the cup. "PROGRAM COFFEE Program quantity" is displayed.
6. Once the required quantity of coffee has been delivered into the cup, press the CAPPUCCINO button. Coffee delivery stops.



The machine is now reprogrammed with the new milk and coffee quantities.

## HOT WATER



Important! Danger of burns.

Never leave the machine unsupervised while hot water is being delivered. The spout becomes hot during delivery. Hold by the handle only.

1. Make sure the hot water spout is attached correctly (fig. 4).
2. Place a container under the spout (as close as possible to avoid splashes).
3. Press the  button (fig. 21). "HOT WATER" is displayed, together with a progress bar which fills gradually as preparation proceeds.
4. The machine delivers 250 ml of hot water, then delivery stops automatically. To interrupt delivery of hot water manually, press the  button again.



Please note!

If “Energy saving” mode is active, you may have to wait a few seconds before the hot water is delivered.

### Changing the quantity of water delivered automatically.

The machine is set by default to automatically deliver 250 ml of hot water. To modify these quantities, proceed as follows:

1. Position a container under the spouts.
2. Press and hold the button until “HOT WATER Program quantity” is displayed, then release.
3. When the hot water in the cup reaches the required level, press the button again.

The machine is now reprogrammed with the new quantity.

## CLEANING



*Important!*

- Do not use solvents, abrasive detergents or alcohol to clean the coffee machine. With De’Longhi superautomatic bean to cup espresso and cappuccino machines, you need not use chemical products to clean the machine.
- None of the components can be washed in a dishwasher.
- Do not use metal objects to remove encrustations or coffee deposits as they could scratch metal or plastic surfaces.

### Cleaning the coffee grounds container

When “EMPTY GROUNDS CONTAINER” is displayed, the grounds container must be emptied and cleaned.

Until the grounds container has been cleaned, the appliance continues to display the message and coffee cannot be made.

To clean (with the machine on):

- Remove the drip tray (fig. 22), empty and clean.
- Empty the grounds container and clean thoroughly to remove all residues left on the bottom.
- Check the red condensate tray and empty if necessary.



*Important!*

When removing the drip tray, the grounds container **must** be emptied, even if it contains few grounds.

If this is not done, when you make the next coffees, the grounds container may fill up more than expected and clog the machine.

### Cleaning the drip tray and condensate tray



*Important!*

If the drip tray is not emptied regularly, the water could overflow from the edge and seep inside or around the machine.

This could damage the machine, the surface it rests on or the

surrounding area.

The drip tray is fitted with a floating level indicator (red) showing the level of water it contains.

Before the indicator protrudes from the cup tray, the drip tray must be emptied and cleaned.

To remove the drip tray:

1. Remove the drip tray and the grounds container (fig. 22);
2. Empty the drip tray and grounds container and wash them;
3. Check the red condensate tray and empty if necessary.
4. Replace the drip tray and grounds container.

### Cleaning the inside of the coffee machine



*Danger!*

Before cleaning internal parts, the machine must be turned off (see “Turning off”) and unplugged from the mains power supply. Never immerse the coffee machine in water.

1. Check regularly (about once a month) that the inside of the appliance (accessible after removing the drip tray) is not dirty. If necessary, remove coffee deposits with a brush and a sponge.
2. Remove all residues with a vacuum cleaner (fig. 24).

### Cleaning the water tank

1. Clean the water tank (A9) regularly (about once a month and whenever you replace the water softener filter (if provided) with a damp cloth and a little mild washing up liquid.
2. Remove the filter (if present) and rinse with running water.
3. Replace the filter (if provided), fill the tank with fresh water and replace the tank.

### Cleaning the coffee spouts

1. Clean the coffee spouts with a sponge or cloth (fig. 25A).
2. Check the holes in the coffee spout are not blocked. If necessary, remove coffee deposits with a toothpick (fig. 25B).

### Cleaning the pre-ground coffee funnel

Check regularly (about once a month) that the pre-ground coffee funnel (A6) is not blocked.

If necessary, remove coffee deposits with a brush.

### Cleaning the infuser

The infuser (A12) must be cleaned at least once a month.



*Important!*

The infuser may not be extracted when the machine is on.

1. Make sure the machine is correctly turned off (see “Turning off”, page 9).

2. Remove the water tank.
3. Open the infuser door (fig. 26) on the right side of the appliance.
4. Press the two red release buttons inwards and at the same time pull the infuser outwards (fig. 27).



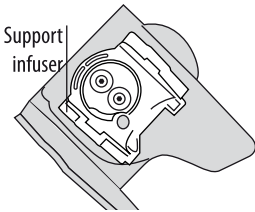
**Important!**

**RINSE WITH WATER ONLY**

**NO WASHING UP LIQUID - NO DISH WASHER**

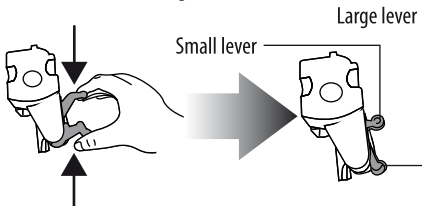
Do not use washing up liquid to clean the infuser as it may damage it.

5. Soak the infuser in water for about 5 minutes, then rinse under the tap.
6. Use the brush to remove any coffee residues left in the infuser housing, visible through the infuser door.
7. After cleaning, replace the infuser by sliding it onto the internal support, then push the PUSH symbol fully in until it clicks into place.

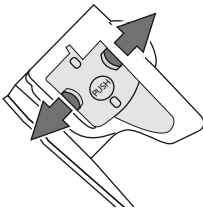


**Please note :**

If the infuser is difficult to insert, before insertion, squeeze the two levers shown in the figure to make it smaller.



7. Once inserted, make sure the two red buttons have snapped out.

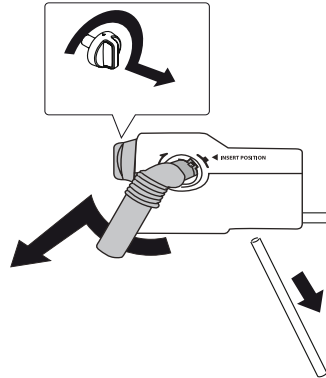


8. Close the infuser door.
9. Put the water tank back.

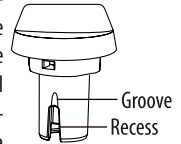
### Cleaning the milk container

Clean the milk container each time you prepare milk as described below:

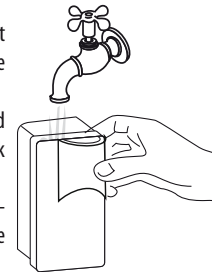
1. Remove the lid.
2. Remove the milk spout and intake tube.
3. Turn the froth adjustment dial clockwise to the "INSERT" position (see figure) and pull off upwards.



4. Wash all the components thoroughly with hot water and mild washing-up liquid. All components are dishwasher safe, placing them in the top basket of the dishwasher. Make sure there are no milk residues on the hollow and groove under the dial (see figure alongside). If necessary, scrape the groove with a toothpick.



5. Rinse inside the froth adjustment dial seat with running water (see figure).
6. Check that the intake tube and spout are not clogged with milk residues.
7. Replace the dial (lining up the arrow with the word "INSERT"), the spout and the milk intake tube.
8. Place the lid back on the milk container.



### Cleaning the hot water/steam nozzle

Each time you prepare milk, clean the nozzle with a sponge to remove milk residues from the gaskets (see figure alongside).

### DESCALING

Descale the machine when the message "DESCALE" flashes on the display.






### **Important!**

Descaler contains acids which may irritate the skin and eyes. It is vital to follow the manufacturer's safety warnings given on the descaler pack and the warnings relating to the procedure to follow in the event of contact with the skin and eyes.


### **Please note:**

Use descaler recommended by De'Longhi only. Failure to descale the appliance as described above also invalidates the guarantee.



1. Turn the coffee machine on.
2. Press the **MENU** button to access the menu.
3. Press the  or  button until "Descale" is displayed.
4. Select by pressing the  button. The message "Descalc Confirm?" appears on the display. Press again to enable the function.
5. The message "Add descaler Confirm?" is displayed.
6. Empty the water tank (A10) completely and remove the water softener filter (if present).
7. Pour the descaler into the water tank up to the level **A** (corresponding to a 100 ml pack) marked on the back of the tank (fig. 28)), then add water (1 litre) up to level **B** (fig. 28).
8. Place an empty container with a minimum capacity of 1.5 litres under the hot water spout (A19) (fig. 5).

### **Danger of burns!**

Hot water containing acid flows out of the hot water spout. Avoid contact with splashes of water.

9. Press the  button to confirm that the solution has been introduced. "Descalc underway" is displayed. The descaling programme automatically performs a series of rinses at intervals to remove all the scale residues inside the coffee machine.

After about 30 minutes, the message "FILL TANK" is displayed. The appliance is now ready for rinsing through with clean water.

11. Empty the container used to collect the descaler solution and replace it empty under the water spout.
12. Remove the water tank, empty, rinse under running water, insert the filter (if present previously), fill the tank with clean water and replace. "Rinsing Confirm?" is displayed.
13. Press the  button to confirm. Hot water comes out of the spout and "Rinsing" is displayed.
14. When the water tank is completely empty, "Rinsing complete Confirm?" is displayed.
15. Press the  button to confirm.
16. Fill the water tank again and the machine is ready for use.

## SETTING WATER HARDNESS

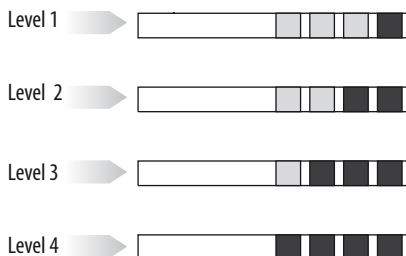
The "DESCALE" message is displayed after a period of time established according to water hardness.

The machine is set by default for a hardness value of 4.


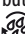



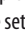
The machine can also be programmed according to the hardness of the mains water in the various regions so that the machine needs to be descaled less often.

### Measuring water hardness

1. Remove the "TOTAL HARDNESS TEST" indicator paper attached to this manual from its pack.
2. Immerse the paper completely in a glass of water for one second.
3. Remove the paper from the water and shake lightly. After about a minute, 1, 2, 3, or 4 red squares form, depending on the hardness of the water. Each square corresponds to one level.



### Setting water hardness

1. Press the **MENU** button to access the menu.
2. Press the  or  button until "Water hardness" is displayed.
3. Confirm the selection by pressing the  button.
4. Press the  or  button repeatedly to set the level as measured by the indicator paper (see previous section).
5. Press the  button to confirm the setting.

The machine is now reprogrammed with the new water hardness setting. Press the **MENU** button again to exit menu.

## WATER SOFTENER FILTER

Certain models are fitted with a water softener filter. If this is not the case with your model, you are recommended to purchase one from De'Longhi Customer Services.

To use the filter correctly, follow the instructions below.

### Installing the filter



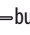
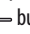

1. Remove the filter from the packaging.
2. Turn the date indicator disk (see fig. 28) until the next two months of use are displayed.

### **Please note :**

The filter lasts about two months if the appliance is used normally. If the coffee machine is left unused with the filter installed, it will last a maximum of three weeks.

3. To activate the filter, run tap water through the hole in the filter as shown in the figure until water comes out of the openings at the side for more than a minute (fig. 30).
4. Extract the tank from the appliance and fill with water.
5. Insert the filter in the water tank and immerse it completely for about ten seconds, sloping it to enable the air bubbles to escape (fig. 31).
6. Insert the filter in the filter housing (fig. 32A) and press as far as it will go.
7. Close the tank with the lid (fig. 32B), then replace the tank in the machine.



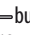
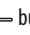

When you install the filter you must notify the appliance of its presence.

8. Press the **MENU** button to enter the menu;
9. Press the  or  button repeatedly until "Install filter" is displayed.
10. Press the  button.
11. "Enable?" is displayed.
12. Press the  button to confirm the selection. "HOT WATER Confirm?" is displayed.
13. Position a container with a minimum capacity of 100 ml under the spout.
14. Press the  button to confirm the selection. The appliance begins hot water delivery and the message "Please wait" is displayed.
15. After delivery, the appliance returns automatically to the "Ready for coffee" position.

The new filter is active and indicated by an asterisk displayed under "Install filter" in the menu. You can now use the appliance.

### Replacing the filter

When "REPLACE FILTER" is displayed, after two months (see date indicator) or when the appliance has not been used for 3 weeks, you should replace the filter:

1. Extract the tank and exhausted filter;
2. Take the new filter out of its packet and proceed as illustrated in points 3, 4, 5 and 6 in the previous section.
3. Position a container with a minimum capacity of 100 ml under the spout.
4. Press the **MENU** button to enter the menu;
5. Press the  or  button repeatedly until "Replace filter" is displayed.
10. Press the  button;
11. The message "Confirm?" is now displayed;
12. Press the  button to confirm the selection;
13. "HOT WATER Confirm" is displayed;
14. Press the  button to confirm the selection. The





appliance begins hot water delivery and the message "Please wait" is displayed.

15. After delivery, the appliance returns automatically to the "Ready for coffee" position.

The new filter is now active and you can use the coffee machine.

### Removing the filter

If you want to use the appliance without the filter, you must remove it and notify the appliance of its removal. Proceed as follows:

1. Extract the tank and exhausted filter;
2. Press the **MENU** button to enter the menu;
3. Press the  or  button repeatedly until "Remove filter\*" is displayed;
4. Press the  button;
5. The message "Confirm?" is now displayed;
6. Press the  button to confirm and the **MENU** button to exit the menu.

### TECHNICAL DATA

Voltage:	220-240 V ~ 50/60 Hz max. 10A
Absorbed power:	1450W
Pressure:	15 bars
Water tank capacity:	1.8 litres max.
Size LxHxD:	238x345x430 mm
Cable length:	1,15 m
Weight:	9,1 Kg
Coffee beans container capacity:	250 g max

The appliance complies with the following EU directives:

- Low Voltage Directive 2006/95/EC and subsequent amendments;
- EMC Directive 2004/108/EC and subsequent amendments
- EC Regulation 1275/2008 for standby
- Materials and accessories coming into contact with food conform to EEC regulation 1935/2004.

### DISPOSAL



In compliance with European directive 2002/96/EC, the appliance must not be disposed of with household waste, but taken to an authorised waste separation and recycling centre.



## DISPLAYED MESSAGE

DISPLAYED MESSAGE	POSSIBLE CAUSE	SOLUTION
FILL TANK	Insufficient water in the tank.	Fill the tank with water and/or insert it correctly, pushing it as far as it will go until it clicks into place (fig. 4).
EMPTY GROUNDS CONTAINER	The grounds container (A14) is full.	Empty the grounds container and drip tray, clean and replace (fig. 23). Important: when removing the drip tray, the grounds container MUST be emptied, even if it contains few grounds. If this is not done, when you make the next coffee, the grounds container may fill up more than expected and clog the machine.
GROUND TOO FINE ADJUST MILL	The grinding is too fine and the coffee is delivered too slowly or not at all.	Repeat coffee delivery and turn the grinding adjustment dial (fig. 8) one click clockwise towards "7" while the coffee mill is in operation. If after making at least 2 coffees delivery is still too slow, repeat the correction procedure, turning the grinding adjustment dial another click until delivery is correct (see the section "Adjusting the coffee mill" on page 11). If the problem persists, turn the steam dial to the I position and let some water run from the cappuccino maker.
INSERT GROUNDS CONTAINER	After cleaning, the grounds container has not been replaced.	Remove the drip tray and insert the grounds container.
ADD PRE-GROUND COFFEE	The "pre-ground coffee" function has been selected without placing any pre-ground coffee in the funnel.	Place pre-ground coffee in the funnel or deselect the "pre-ground" function.
DESCALE	The machine must be descaled.	The descaling procedure described in the section "Descaling" needs to be performed as soon as possible (page 15).
REDUCE COFFEE AMOUNT	Too much coffee has been used.	Select a milder taste or reduce the quantity of pre-ground coffee.
FILL BEANS CONTAINER	The coffee beans have run out.	Fill the beans container.
	The pre-ground coffee funnel is clogged.	Empty the funnel with the help of a brush, as described in the section "Cleaning the pre-ground coffee funnel" (page 14).
INSERT INFUSER ASSEMBLY	The infuser has not been replaced after cleaning.	Insert the infuser as described in the paragraph "Cleaning the infuser" (page 14).
INSERT TANK	The tank is not correctly in place.	Insert the tank correctly and press as far as it will go.
GENERAL ALARM	The inside of the appliance is very dirty.	Clean the inside of the appliance thoroughly, as described in the section "Cleaning" (page 13). If the message is still displayed after cleaning, contact customer services.
REPLACE FILTER	The water softener filter is exhausted.	Replace the filter or remove it as described in the section "Water softener filter" (page 16).
TURN DIAL TO CLEAN	Milk has been delivered recently and the tubes inside the milk container must be cleaned.	Turn the froth adjustment dial to CLEAN.
INSERT WATER SPOUT	The hot water spout is not inserted or is inserted incorrectly.	Insert the water spout (D3) as far as it will go.
WATER CIRCUIT EMPTY FILL WATER CIRCUIT <i>alternating with...</i> HOT WATER PRESS OK	The water circuit is empty.	Press OK to deliver water from the spout until it flows out normally.
INSERT MILK CONTAINER	The milk container is not inserted correctly.	Insert the milk container (fig. 13) as far as it will go.

## TROUBLESHOOTING

Below is a list of some of the possible malfunctions.

If the problem cannot be resolved as described, contact customer services.

PROBLEM	POSSIBLE CAUSE	SOLUTION
The coffee is not hot.	The cups were not preheated.	Warm the cups by rinsing them with hot water. (N.B. you can use the hot water function).
	The infuser has cooled down because 2/3 minutes have elapsed since the last coffee was made.	Before making coffee, heat the infuser by pressing the  button.
	A low coffee temperature is set.	Set a high coffee temperature in the menu.
The coffee is weak or not creamy enough.	The coffee is ground too coarsely.	Turn the grinding adjustment dial one click anticlockwise towards "1" while the coffee mill is in operation (fig. 8). Continue one click at a time until coffee delivery is satisfactory. The effect is only visible after delivering 2 coffees (see the section: "Adjusting the coffee mill" on page 11).
	The coffee is unsuitable.	Use pre-ground coffee for espresso machines only.
The coffee is delivered too slowly or in drops.	The coffee is ground too finely.	Turn the grinding adjustment dial one click clockwise towards "7" while the coffee mill is in operation (fig. 10). Continue one click at a time until coffee delivery is satisfactory. The effect is only visible after delivering 2 coffees (see the section: "Adjusting the coffee mill" on page 11).
Coffee does not come out of one or both of the spouts.	The spouts are blocked.	Clean the spouts with a toothpick.
The milk does not come out of the milk spout.	The milk container lid is dirty.	Clean the milk container lid as described in the section "Cleaning the milk container".
The milk contains large bubbles and squirts out of the milk spout or there is little froth.	The milk is not cold enough or is not semi-skimmed.	Use skimmed or semi-skimmed milk at refrigerator temperature (about 5° C). If the result is not as you wished, try changing brand of milk.
	The froth adjustment dial is incorrectly adjusted.	Adjust following the instructions in the section "Making cappuccino and milk based drinks".
	The milk container lid or froth adjustment dial are dirty	Clean the milk container lid and dial as described in the section "Cleaning the milk container".
	The hot water/steam nozzle is dirty	Clean the nozzle as described in the section "Cleaning the hot water/steam nozzle".
The appliance does not come on.	It is not plugged into the mains socket.	Plug into the mains socket.
	The main switch (A8) is not turned on.	Press the main switch (fig. 1).
The infuser cannot be extracted	The appliance has not been turned off correctly	Turn the appliance off by pressing the  button (page 9)